

DOCUMENT RESUME

ED 111 787

SP 009 479

AUTHOR Harkness, Harvey; And Others  
 TITLE New Hampshire Staff Development Handbooks: 1, 2, 3. Report No. 74.  
 INSTITUTION New England Program in Teacher Education, Durham, N.H.  
 PUB DATE Sep 74  
 NOTE 156p.  
 EDRS PRICE MF-\$0.76 HC-\$8.24 Plus Postage  
 DESCRIPTORS \*Developmental Programs; \*Directories; Educational Resources; Guidelines; \*Manuals; \*Resource Guides; \*Staff Improvement; Staff Orientation  
 IDENTIFIERS \*New Hampshire

ABSTRACT

This handbook/catalogue is divided into three parts, the first of which is entitled "Handbook for Staff Development," and was written for those new to New Hampshire, the education profession, or the concept of staff development. It contains background information, philosophy, and procedures on staff development; it seeks to encapsulate the conceptual origin of staff development and explain its philosophy as it affects the individual staff member and local supervisory union/district. It explains how staff development is organized within the district and how it can be implemented and evaluated, and offers sources of information available to local districts. Part 2 is a list of the names, titles, addresses, and telephone numbers of educational resource people. These are listed alphabetically by subject area and include 75 subjects such as activity-centered classrooms, administration, adult education, arts and crafts, behavior, career counseling, communication skills, curriculum, day care, ERIC, health, library services, news media, physical education, and vocational counseling. Part 3 of this handbook/catalogue is a directory of external resources, and includes listings on (1) arts resources; (2) boat cruises; (3) educational resources; (4) historic resources; (5) organizational and state agency resources; (6) places of interest; and (7) science centers. The entries consist of the name, address, and telephone numbers of the place or organization, and sometimes an annotation. (BD)

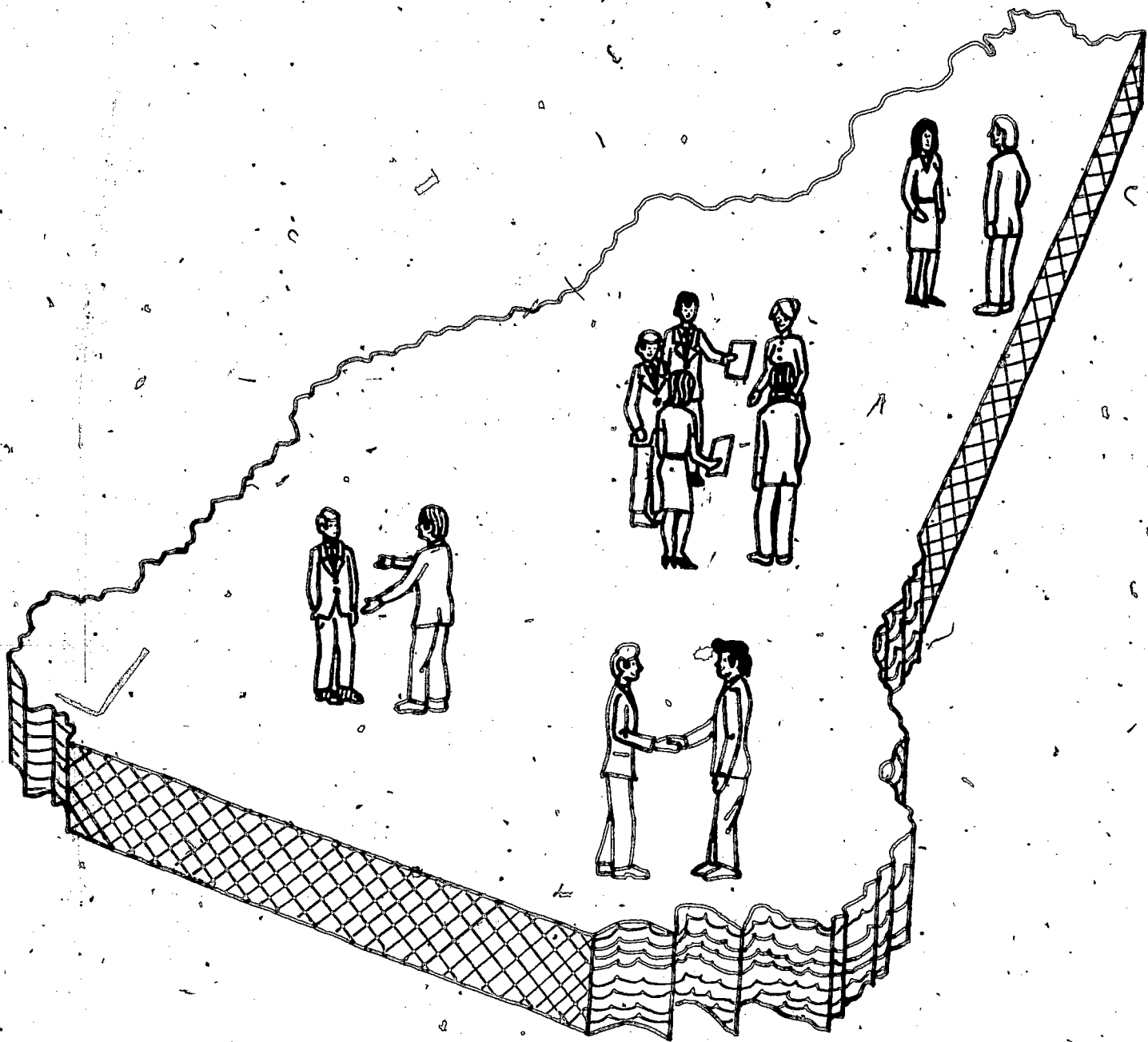
\*\*\*\*\*  
 \* Documents acquired by ERIC include many informal unpublished \*  
 \* materials not available from other sources. ERIC makes every effort \*  
 \* to obtain the best copy available. nevertheless, items of marginal \*  
 \* reproducibility are often encountered and this affects the quality \*  
 \* of the microfiche and hardcopy reproductions ERIC makes available \*  
 \* via the ERIC Document Reproduction Service (EDRS). EDRS is not \*  
 \* responsible for the quality of the original document. Reproductions \*  
 \* supplied by EDRS are the best that can be made from the original. \*  
 \*\*\*\*\*

ED111767

U S DEPARTMENT OF HEALTH,  
EDUCATION & WELFARE  
NATIONAL INSTITUTE OF  
EDUCATION

THIS DOCUMENT HAS BEEN REPRO  
DUCED EXACTLY AS RECEIVED FROM  
THE PERSON OR ORGANIZATION ORIGIN  
ATING IT. POINTS OF VIEW OR OPINIONS  
STATED DO NOT NECESSARILY REPRESENT  
OFFICIAL NATIONAL INSTITUTE OF  
EDUCATION POSITION OR POLICY

# THE HANDBOOK FOR STAFF DEVELOPMENT



NEW HAMPSHIRE EDUCATIONAL RESOURCE CATALOG - PART I  
OFFICE OF TEACHER EDUCATION AND PROFESSIONAL STANDARDS  
DEPARTMENT OF EDUCATION  
CONCORD, NEW HAMPSHIRE  
SEPTEMBER, 1974

GOVERNOR OF NEW HAMPSHIRE

Meldrim Thomson, Jr.

THE EXECUTIVE COUNCIL

District No. 1      Lyle E. Hersom, Groveton  
District No. 2      James H. Hayes, Concord  
District No. 3      Robert E. Whalen, Portsmouth  
District No. 4      John F. Bridges, Bedford  
District No. 5      Bernard A. Streeter, Jr., Nashua

Publication of this document is in part supported  
by funds from New England Interstate (SO5).

NEW HAMPSHIRE  
STATE BOARD OF EDUCATION  
1974-75

APPOINTMENT

TERM EXPIRES

1973	William P. Bittenbender, Deering Chairman	1978
1970	Donald E. Borchers, Berlin	1976
1974	Mrs. Cathrine R. Caouette, Contoocook	1979
1965	Gerard F. Cullerot, D.D.S., Manchester	1977
1971	Daniel A. Gosselin, Enfield	1976
1969	Edward C. Sweeney, Jr., Keene	1979
1970	Mrs. Jean S. Tufts, Exeter	1975

COMMISSIONER OF EDUCATION

Newell J. Paire

DEPUTY COMMISSIONER

Robert L. Brunelle

CHIEF, DIVISION OF ADMINISTRATION

Paul R. Fillion

TABLE OF CONTENTS

Why was the <u>Handbook</u> written? . . . . .	1
What is the <u>background</u> of Staff Development? . . . . .	3
What is a <u>Master Plan</u> for Staff Development? . . . . .	7
How is Staff Development <u>organized</u> within the district? . . . . .	10
What does a Staff Development Committee do to <u>implement</u> and <u>evaluate</u> Staff Development within the district? . . . . .	15
What are good <u>sources of information</u> for use by local districts? . . . . .	20
Appendix . . . . .	25

WHY WAS THE HANDBOOK WRITTEN?

Emulating the spirit embodied in the motto, "Live Free or Die", the New Hampshire State Department of Education has not been content merely to maintain the status quo in training its educational staff. Seeking improvement through innovation, the Department has embarked on a new venture of professional growth, which draws upon the vast resources of Granite state teachers to stimulate new cooperative alternatives for individual growth.

"CREATIVITY...THE KEY TO OUR SUCCESS" is the underlying and pervading basis of STAFF DEVELOPMENT. By encouraging the teacher to enlarge his capabilities, focus his energies and share his expertise, Staff Development provides the impetus to reach new vistas, instead of simply maintaining a stereotyped pattern of continuity.

The Handbook for Staff Development has been written for those new to New Hampshire, new to the education profession, or new to the concept of Staff Development.

Containing background, philosophy and procedures, the Handbook seeks to encapsulate the conceptual origin of Staff Development and explain its philosophy as it affects the individual staff member and local supervisory union/district.

The Handbook elucidates Staff Development procedures, but avoids an over-structuring of them, so as not to negate the premise of state-wide individual creativity.

The Handbook supplements and up-dates Staff Development For Educational Personnel Guideline Requirements, and as such provides a guide for professional growth. While providing a basic foundation for local Staff Development, the Handbook is broad enough to be used in formulating varied blueprints for professional growth.

OFFICE OF TEACHER EDUCATION AND PROFESSIONAL STANDARDS

State Department of Education

Carolyn Sweetser

Harvey Harkness

Douglas Brown

John Davy

Credits:

Paula Goddard

Nancy Rambusch

Southern New Hampshire Staff Development Committee

Contributors:

Janice Gilbert



WHAT IS THE BACKGROUND OF STAFF DEVELOPMENT?

1. What is the meaning of Staff Development?

The word "Staff" refers to all those people involved in the direct delivery of educational services to children.

The word "Development" means the continuous expansion of one's self, one's abilities and one's professional knowledge.

The term "Staff Development", then, means the continuous growth, professionally and personally, of all those people involved in the direct delivery of educational services to children.

2. Why is Staff Development needed?

The process of Staff Development is needed because the previous method for a teacher's professional growth - taking 6 credit hours every 5 years - is too limited to be the only avenue to continuous and individual professional/personal growth. Impersonal credit hours can not possibly meet the varied, individual needs of all teachers.

The State Board of Education, in seeking to improve the quality of New Hampshire education through better prepared teachers, is seeking to provide a broader framework within which teachers can grow professionally.

3. How does Staff Development provide for professional growth?

Staff Development provides for professional growth by encouraging a teacher to choose from a wide spectrum of activities to develop himself as a person and as a teacher.

To provide quality education, a teacher must keep abreast of educational innovations, update his subject knowledge and provide means of meeting his supervisory union/district's and his children's educational needs. Therefore, he must be free to do what is necessary to meet those needs.

"Staff Development for educational personnel grew out of the notion that one's professional growth should be a continuous and life-long process related closely to the goals and objectives for learning in the school district where employed." (Douglas H. Brown, Assistant Director, Office of Teacher Education and Professional Standards)

A teacher must have the freedom to define his own needs and goals within the framework of his supervisory union/district's needs and then to choose alternative routes to professional growth.

4. When did Staff Development come about and by what means?

In the Fall of 1967, the State Board of Education appointed the Blue Ribbon Committee to review present certification regulations.

In January, 1970, on the recommendation of the Blue Ribbon Committee, the State Board of Education appointed a Professional Standards Board "to develop teacher preparation, certification and inservice education recommendations for the State Board..." (Staff Development for Educational Personnel Guideline Requirements)

In June, 1971, the State Board of Education, upon the recommendation of the Professional Standards Board, approved Staff Development as a state-wide method of professional growth and, hence, a basis of recertification, to become effective July 1, 1975.

5. What is the connection between Staff Development and recertification by the State Department of Education?

Recertification by the State Department of Education is based on a teacher showing sufficient professional growth to continue teaching.

Prior to 1970, showing professional growth meant taking 6 credit hours every 5 years. However, this method, as was previously stated, does not adequately or necessarily show professional growth. A teacher to grow professionally - i.e., be a better teacher - must meet the needs of his district's children. A teacher can best do this by having a variety of alternative routes from which to choose. So, in 1970, this expanded procedure for growing professionally - Staff Development - replaced the former recertification process.

Since meeting local district needs is involved with growing professionally, it then became the province of the local district to formalize and implement a program of Staff Development best suited to meet those needs. "If the present arbitrary credit requirements are to be eliminated, it is vitally important that viable procedures be developed that will meet individual needs and the needs of the local system... We recommend that responsibility for planning professional growth be placed at a local level." (Final Report of the Blue Ribbon Certification Committee to the New Hampshire State Board of Education)

Between 1970 and July 1, 1975, when local plans will be put into operation, recertification has been received upon the recommendation of the Superintendent. It has been his responsibility to evaluate a teacher's professional growth. "...we assume that in the job of judging performance, a superintendent will work with the principals, department heads and other teachers. Evaluations should be a team effort, should be done on a number of occasions, and reports always given to the teachers soon after appraisal." (Final Report of the Blue Ribbon Certification Committee to the New Hampshire State Board of Education)

On July 1, 1975, recertification is to be based on participation in a local school district's Staff Development program as outlined in a Master Plan. Essentially, this will require that every full-time educational employee must satisfactorily complete a minimum of fifty (50) clock hours of approved activity in each three year period beginning with the academic year 1975-1976.

6. How is Staff Development formalized on the local level?

It is formalized in the writing of a Master Plan for Staff Development.

WHAT IS A MASTER PLAN FOR STAFF DEVELOPMENT?

7. What is a Master Plan for Staff Development?

A Master Plan for Staff Development is a document written for a supervisory union/district by its own Staff Development Committee. It outlines two separate, yet very much interrelated and simultaneous functions of Staff Development:

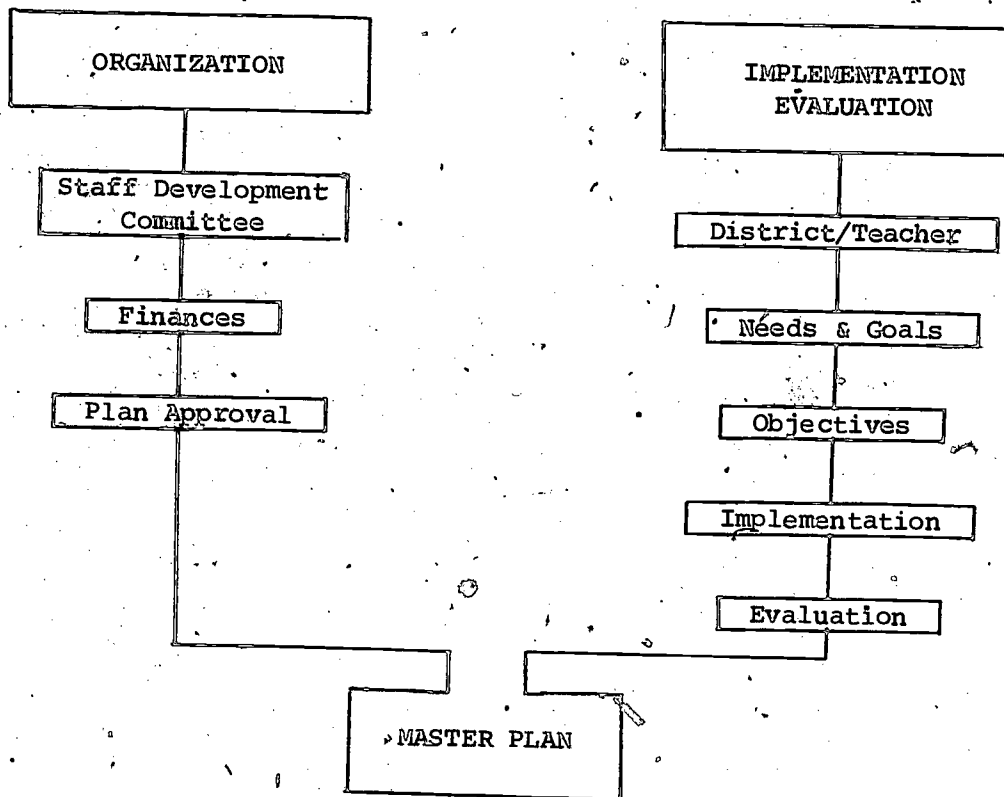
The ORGANIZATION of Staff Development within the supervisory union/district

The IMPLEMENTATION AND EVALUATION of Staff Development within the supervisory union/district

The first function would deal with questions about the Staff Development Committee itself, its by-laws, membership, etc.; finances for the Staff Development process; the mechanics of submitting the Master Plan and teacher plans for approval.

The second function would include questions dealing with educational needs and goals of the supervisory union/district, planning objectives to meet those needs, evaluating the effectiveness of those objectives, and formulation of professional growth plans for individual staff members.

A Master Plan might be diagrammed as follows:



8. How will these functions of Staff Development be treated in this Handbook?

Each function will be dealt with separately in order to make it easier for the reader to assimilate information.

But it must be remembered that the sections will overlap because these functions develop simultaneously as they are outgrowths of each other.

HOW IS STAFF DEVELOPMENT ORGANIZED WITHIN THE DISTRICT?



9. How is Staff Development organized within the supervisory union/district?

Staff Development is organized within the supervisory union/district by a Staff Development Committee.

10. Who is on the Staff Development Committee?

Members of the Staff Development Committee are "elected from peer groups identified by the local Superintendent...broadly representative of teachers, service personnel, administrators, a school board member, parents and students."

"Not less than nine (9) or more than fifteen (15) members... compose the Staff Development Committee. (Staff Development for Educational Personnel Guideline Requirements)"

11. Who heads the Staff Development Committee?

The Staff Development Committee is headed by a committee chairman to be elected by the full committee.

12. Does the size of the supervisory union/district affect the Staff Development Committee?

Yes. "Local master plans which are sufficiently large or ambitious may consider appointment of a full-time Director-Chairman..." (Staff Development for Educational Personnel Guideline Requirements)

Regional Master Plans are encouraged where appropriate.

Individual districts may also develop their own Master Plans.

13. What is the purpose of a Staff Development Committee?

Generally, the Staff Development Committee develops, implements, and evaluates the Master Plan for Staff Development, but its exact duties are decided by the supervisory union/district.

14. From whom in the supervisory union/district does the Staff Development Committee receive its direction?

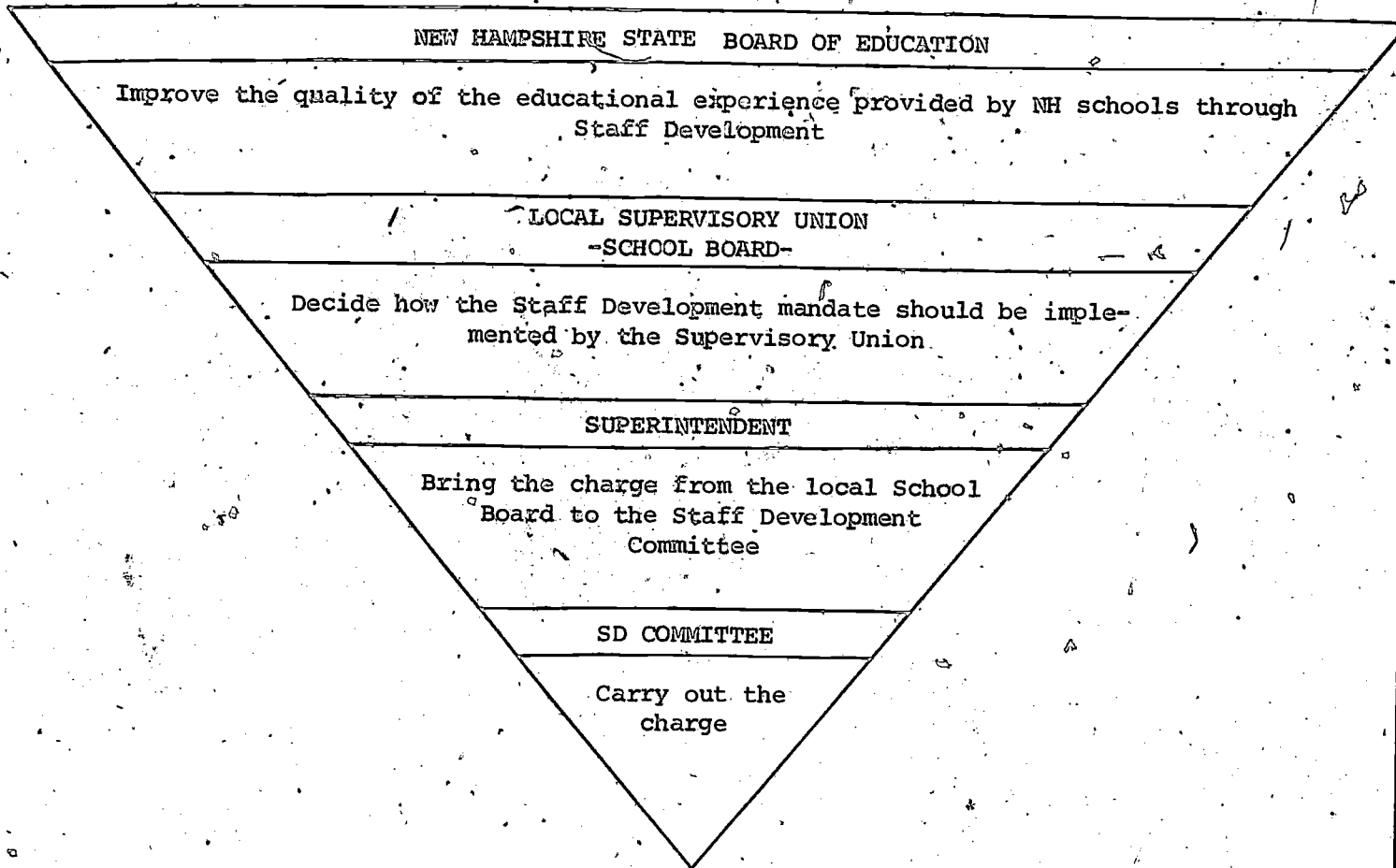
It is the responsibility of the local School Board and Superintendent of Schools to outline for the Staff Development Committee its exact duties.

In deciding these, School Board and Superintendent keep in mind the State Board of Education's goal of improved education through Staff Development.

This outlining of duties to the Staff Development Committee can also be done in conjunction with the Staff Development Committee. The prerogative belongs to the local School Board.

15. How could Staff Development be diagrammed?

If one were to diagram a state outline of Staff Development as discussed so far, it might best be seen as an inverted pyramid:



16. Is any financial assistance available from the State to the local supervisory union/district to help defray the cost of Staff Development?

"State aid, when available, shall be apportioned on a per capita basis according to the number of full-time professionals employed in districts which are party to a State approved local Master Plan." (Staff Development for Educational Personnel Guideline Requirements)

17. How else can Staff Development be financed?

The amount of dollars available within each supervisory union/district is, of course, going to vary a great deal across the state.

However, most supervisory union/districts have had monies in their budgets for course reimbursements, conferences, professional days, professional literature, etc. It is becoming common practice for supervisory union/districts to combine these funds under the category of "Staff Development".

18. How--by whom and to whom--should funds be allocated?

These are decisions which must be made by each individual supervisory union/district and then written into the Master Plan.

19. Who approves the Master Plan on the local level?

Following the finalization of the Master Plan by the Staff Development Committee, it is then presented to the staff of the supervisory union/district, to the Superintendent of Schools and to the supervisory union/district School Boards.

"If disapproved at any level, the plan will be resubmitted to the local Staff Development Committee for redevelopment." (Staff Development for Educational Personnel Guideline Requirements)

20. After local approval, what happens to the Master Plan?

Every district should use for its Master Plan cover, the Transmittal Sheet as depicted on page 26 in the Appendix and send six (6) copies to:

Office of Teacher Education  
and Professional Standards  
State Department of Education  
State House Annex  
Concord, New Hampshire 03301

21. What criteria does the State Department Staff Development Team use in reviewing a Master Plan?

In general, there are four (4) sets of questions which the Team uses to review a Master Plan:

1. "Is the plan consistent with the guidelines for Staff Development?"
2. "How does it define the goals and objectives of the district/union? What is it they hope to accomplish?"
3. "Does the plan clearly describe the process by which they hope to achieve their outcomes? How will a person(s) function in meeting the local staff development master plan requirements? How will the committee discharge its responsibilities?"
4. "Has the plan made provision to assess its effectiveness? How will they know if they have accomplished what they set out to do? When will they know when they have arrived?" (Staff Development for Educational Personnel Guideline Requirements)

22. Is it possible for a Master Plan not to be endorsed?

In terms of the process established for Staff Development in New Hampshire, the answer to this question is "no". Review of a Master Plan is made in the basis of how adequately it meets the four criteria set forth in question 21.

In those instances where a Master Plan falls short of meeting one or more of the above mentioned criteria, the State Department Staff Development Team Field Agent and the local Staff Development Committee together will focus their energies on eliminating the shortcomings of the Plan. It is through this on-going, mutually-supportive relationship between local and state Staff Development personnel that Staff Development will be successfully implemented in New Hampshire.

WHAT DOES A STAFF DEVELOPMENT COMMITTEE DO TO  
IMPLEMENT AND EVALUATE STAFF DEVELOPMENT WITHIN THE DISTRICT?

23. How does the supervisory union/district implement the Staff Development design?

Staff Development is designed to help a supervisory union/district reach its own educational goals and those of the state as a whole. The Staff Development design is then highly individualistic and yet it meets the corporate needs of the state. Because of the individualistic nature of Staff Development, there are no pre-determined specifics in implementing Staff Development. However, there are several areas of consideration that may make the process flow more smoothly. These are incorporated in the criteria by which a Master Plan is reviewed by the State Department of Education and in the "Benchmarks to an Approved Master Plan". (The reader is referred to question 21 for the criteria and to pages 27 and 28 in the Appendix for the "Benchmarks".) For the sake of clarity and brevity in dealing with these areas of consideration, we refer to question 7, where the IMPLEMENTATION AND EVALUATION phase of a Master Plan for Staff Development is diagrammed.

The areas to consider, then, to assist local implementation of Staff Development are: following the guidelines for Staff Development contained in Staff Development for Educational Personnel Guideline Requirements; establishing local educational needs, goals and objectives; describing the process by which local Staff Development objectives are to be accomplished; and evaluating the effectiveness of this process.

24. What are the guidelines for implementing Staff Development as set forth in Staff Development for Educational Personnel Guideline Requirements?

In essence, the guidelines call for the election of a local Staff Development Committee representing a cross-section of the school and community. They state the requirements by which the teacher becomes recertified. They call for the development of local educational goals and objectives. This, in turn, will require an evaluation process to determine how well the supervisory union/district has met its goals and objectives.

This, in brief, is the scope of Staff Development activities. The Staff Development Committee itself has already been discussed and will be again, as will the other activities.

The first step toward implementing Staff Development, then, is the election of the local Staff Development Committee. It is important that each member of the Committee become thoroughly familiar with Staff Development for Educational Personnel Guideline Requirements, in particular, Articles I, II and III.



25. What do the terms educational goals, needs and objectives mean?

Educational goals are the purposes or aims of education, what a supervisory union/district wants to do educationally for its children.

Educational needs represent the difference or distance between what a supervisory union/district is presently doing or providing, and what it should be doing or providing, i.e., its educational goals.

Objectives are defined as the steps or course of action to be taken to reduce the needs and reach the goals.

26. How does a supervisory union/district in its Master Plan define/establish educational needs, goals, objectives?

Before a supervisory union/district can develop and carry out a Staff Development plan, it needs to identify its educational goals, i.e., what it wants to accomplish, and, then, what it is already accomplishing. This requires collecting information concerning local goals and needs. The process of obtaining this information is commonly referred to as a needs assessment.

A needs assessment can be conducted in a variety of ways. Staff Development Committees should contact their State Department Staff Development Team Field Agent for assistance in developing this process. There are a number of pre-packaged materials, available commercially. These are summarized schematically on pages 29-38 in the Appendix.

Once educational needs and goals are defined and established, objectives can be planned to help a supervisory union/district move positively toward its goals.

The State Department of Education has reinforced the need to develop educational goals and objectives when it adopted the "Powers and Duties of School Boards"<sup>1</sup>:

"School boards shall, in consultation with the Superintendent and in accordance with statutes and regulations of the State Board of Education, determine the educational goals of the district, develop long-range plans and identify measurable and attainable short-term objectives. The school board shall require the implementation of educational programs designed to reflect the goals and objectives and further, the school board shall require the appropriate review of such programs and make public the results of such investigation."

---

<sup>1</sup>New Hampshire Revised Statutes Annotated Relating to Public Schools. State Department of Education, Concord, New Hampshire, 1974, 295-296.

27. How does a supervisory union/district plan a process by which Staff Development objectives will be accomplished?

There are a variety of ways of implementing Staff Development objectives; at least as many as the number of individuals involved in the planning process. Every alternative should be analyzed as to its possible effectiveness in gaining those objectives. A more detailed discussion of alternatives, objectives and implementing them is contained on pages 39-41 in the Appendix.

Whatever processes or activities are finalized, however, there are certain aspects of Staff Development which a supervisory union/district must delineate in its Master Plan:

A Master Plan should clearly identify the procedure a teacher must follow in fulfilling Staff Development/recertification requirements. According to Staff Development for Educational Personnel Guideline Requirements:

"The Master Plan shall recognize individual differences among professional educators. Therefore, the plan shall encourage a choice of activities within the four major staff development components designed for inservice growth and recertification. These four components are:

a. Knowledge of Subject or Service Area

This component relates to the individual's command of subject matter or service information in his primary teaching or service assignment.

b. Basic Teaching Skills

This component relates to the individual's skills in such pedagogical areas as diagnosis of learning problems, learning strategies, questioning techniques, evaluation techniques, etc.

c. Orientation to Structure and Operation of Local Schools

This component relates to the legal and traditional basis of the local schools. Questions of governance, policies, organization, communication, finance, facilities, services, individual limitations and opportunities as they relate to the operation of local schools are included here.

d. Exploratory or Innovative Activities

This component relates to a type of group or individual activity not relating to components a, b, or c. These activities may include objectives not easily defined or evaluated...



"The local Master Plan shall require every full-time educational employee for recertification purposes, to satisfactorily complete a minimum of fifty (50) clock hours of approved activity in each three (3) year period beginning with the academic year 1975-1976. Of the total fifty (50) hours required, at least ten (10) hours shall be devoted to each of two (2) of the four (4) component areas."

Staff Development activities should include a wide range of possibilities to allow the staff member the freedom to grow in the direction he chooses. "College courses, local inservice seminars/workshops, conferences, out-of-district school visitations, sabbaticals, institutes, and independent study are examples of eligible activity designs within one or more of the four (4) components."  
(Staff Development for Educational Personnel Guideline Requirements)

It is important that the Master Plan clearly establish the Staff Development Committee's area of responsibility, particularly as it relates to the school board, school administration and school staff. Good organization suggests that the Staff Development Committee establish by-laws covering all items necessary to provide for the on-going function of the Committee: i.e., election processes, amending of by-laws, appeal procedures and other matters pertaining to carrying out Staff Development activities. These by-laws should be part of the Master Plan.

28. How will a Master Plan provide for evaluating the effectiveness of its activities and know when its Staff Development goals and objectives have been reached?

The evaluation process need not be a complicated, weighty one. To be most effective, it should be an on-going, integral part of carrying out Staff Development activities. Suggested methods for obtaining periodic feedback include "standardized instruments (achievement and aptitude tests, attitude scales, performance tests); non-standardized instruments (criterion referenced tests, rating scales, reports, surveys, recordings and video tapes, logs and records); and personalized techniques (interviews, observations)."<sup>2</sup> In this way, a supervisory union/district can maintain a constant focus on the educational goals to be achieved. If necessary, then, Staff Development activities, while in process, can be modified to focus more accurately on their goals and thus achieve better results.

---

<sup>2</sup> Comprehensive Planning in Education A Planning Handbook for School Districts. Department of Education, Divisions of Research, Planning and Evaluation/Field Services, 225 West State Street, Trenton, New Jersey 08625, April, 1974, pp. 13-14.

WHAT ARE GOOD SOURCES OF INFORMATION FOR USE BY LOCAL DISTRICTS?

The following bibliographies have been taken from Comprehensive Planning<sup>3</sup>  
and Needs Assessment in Education.<sup>4</sup>

"ED" numbers refer to the number of the microfiche of the document in the E.R.I.C. system. Microfiche can be requested from the New Jersey Occupational Research Center in Edison, New Jersey.

#### GENERAL BIBLIOGRAPHIES

Administering for change. An annotated Bibliography Research for Better Schools, Inc., 1700 Market Street, Suite 1700, Philadelphia, Penna. 19103.

Models for Planning. September, 1970. 17 p. ED 043 114.

Models for Rational Decision Making. John S. Hall, September, 1970. 19 p. ED 043 115.

Needs Assessment: A Manual for Educators. 10a Contains an Extensive bibliography. Worldwide Education and Research Institute, 2315 Stringham Avenue, Salt Lake City, Utah 84109.

Source: A Resource Handbook for Promoting Community Involvement in Educational Goal Determination, "Our Schools" Project, Department of Education, 225 West State Street, Trenton, New Jersey 08025.

#### INSTRUMENTS AND TECHNIQUES FOR COLLECTING DATA

Boroun, Frederick Gramm, Measurement and Evaluation, Itasca, Illinois, F.E. Peacock Publishers, 1971.

Dyer, Henry S., The Concept and Utility of Educational Performance Indicators, Ed. Testing Service, Princeton, New Jersey.

Flanagan, John C. "The Uses of Education Evaluation in the Development of Program Courses, Instructional Materials and Equipment, Instructional and Learning Procedures and Administrative arrangements," in Tyler, Ralph E., Ed. Educational Evaluation New Roles, New Means. The 68th yearbook of the National Society for the Study of Education. Part II, University of Chicago Press, 1969.

Hyman, Herbert, Survey Design and Analysis, New York Free Press, 1955.

<sup>3</sup>Ibid., p. 27-28.

<sup>4</sup>Needs Assessment in Education A Planning Handbook for Districts. Department of Education, Divisions of Research, Planning and Evaluation/Field Services, Bureau of Planning, 225 West State Street, Trenton, New Jersey, 08625, February, 1974, p. 69-71.

Jackson, D.N. and Messich, S. (Ed.), Problems in Human Assessment, New York McGraw-Hill, 1967.

Needs Assessment Survey, Dallas Independent School District, Communications and Community Relations Department, 3700 Ross Avenue, Dallas, Texas, 75204, 1973.

Oppenheim, A.N. Questionnaire design and attitude measurement. New York. Basic Books, 1966.

Popham, W. James, Educational Needs Assessment in the Cognitive Affective and Psychomotor Domain. Paper presented at three ESEA Title III Regional Workshops, Los Angeles: Center for the Study of Evaluation, University of California, 1969.

Preparing Instructional Objectives. Analyzing Performance Problems, Fear Siegler, Inc., Ed. Division, 6 Davis Drive, Belmont, California 94002.

Shaw, Marvin E. and Wright, Jack M., Scales for the Measurement of Attitudes. New York McGraw-Hill, 1967.

Stephen, F.F. and McCarthy, P.J. Sampling Opinions on Analysis of Survey Procedures, New York. Wiley, 1958.

Weaver, W. Timothy. The Delphi Method, Syracuse Education Policy Research Center, Working-Draft, June, 1970.

#### MANAGING A NEEDS ASSESSMENT

Cook, Desmond, L. Educational Project Management, Columbus, Ohio: Charles E. Merrill Publishing Company, 1971.

Eastmond, Jefferson, Worldwide Education and Research Institute, 2315 Stringham Ave., Salt Lake City, Utah 84109.

Holliday, Albert and Goble, Nicholas, "How to make a Citizens Committee Work," Pennsylvania Education, July-August, 1972, Vol. 3.

Management System Needs Assessment Program Worksheets and Handouts EIC South Woodbury-Glassboro Road, Pittman, New Jersey 08071. John Rady (609) 589-3410. Provides step-by-step instructions for carrying out a needs assessment. Includes worksheets for projection and handouts.

## MODELS

### Center for the Study of Evaluation. Elementary School Evaluation Kit.

An Authoritative and Carefully field tested KIT to help the Principal, Superintendent and Curriculum Director answer two vital questions: (1) "What are my school-priority needs?" and (2) "How can I best allocate my School resources to meet their needs?" Obtainable at \$80.00 from: Allyn and Bacon, Inc., Langwood Division, Boston, Mass. 02210.

Educational Goals and Objectives. A Model Program for Community and Professional Involvement. U.S.O.E. III ESEA P.L. 89-10, Sec.306. Northern California Program Development Center, Chico State College, Chico, California. Dr. B. Keith Rise, Director.

Evaluation Workshop II: Needs Assessment/Preliminary Version CTB/ McGraw-Hill, Del Monte Research Park, Monterey, California 93940, Tel. 408/373-2932.

Fresno County Department of Education, 2314 Mariposa Street, Fresno, California, 93721, Cost \$12.00 for materials on Fresno planning model.

Inter active Education, Inc., In-Service Education, 123 Sylvan Ave., Englewood Cliffs, New Jersey 07623. Anne Wennhold, Director; 201-947-0458. Has workshops responding to the need to "know more" about needs assessment. The program is concerned with an approach to developing a needs assessment program for your school.

Phi Delta Kappa, Inc., Eighth and Union, Box 789, Bloomington, Indiana 47401. Kit \$28.00.

Sharing Decisions-Dallas Style: An Overview of Dallas Model for Shared-Decision Making, Dallas Independent School District, Communications and Community Relations Department, 3700 Ross Ave Dallas, Texas 75204, 1973.

Worldwide Education and Research Institute, 2315 Stringham Avenue, Salt Lake City, Utah 84109, 801-521-9393.

## PLANNING IN GENERAL

Bolan, Richard S., et.al. "A Social-Action Approach for Planning Education," paper AIP, October 1970, ED 047 376.

Ewing, David. The Human Side of Planning. McMillan, New York, 1969.

Ewing, David. The Practice of Planning. Harper and Row, New York, 1968.

Green, Thomas, Ed., Educational Planning in Perspective. Futures, IPC Science and Technology Press, England, 1971.

Haveloch, R.G., The Change Agents Guide to Innovation in Education. Englewood Cliffs, New York, Ed. Technology, 1972.

Haveloch, R.G., A Guide to Innovation in Education. Institute for Social Research University of Michigan. Ann Arbor, Michigan.

Kaufman, Roger, Educational System Planning. Prentice-Hall, Englewood Cliffs, New Jersey, 1972.

Miklos, E. and others, Perspectives on Educational Planning. 1972, ED 066 787.

Phi Delta Kappa National Study Commission of Education (Stufflebeam, Foley, Gephart, Ginba, Hammond, Maryiman & Provus), Educational Evaluation & Decision-Making. F.E. Peacock, Itasca, Illinois, 1971.

Techt, Leonard and Huefner, Robert, "Strategic Variables in Planning." Designing Education for the Future, No. 3, Planning and Effecting Changes in Education. Morphert, Edgar and Ryan, Charles, Citation Press. 1967, p. 1-12.

Tanner, C. Kenneth. Designs for Education Planning. A Systematic Approach. Lexington, Mass. Heath Lexington Books (D.C. Heath & Co.), 1971.

Terhin, Sandord, "Comprehensive Planning for School Districts," Paper, AERA, 1970. 12 p. ED 041 389.

APPENDIX

97-9  
-32-



APPENDIX A: TRANSMITTAL SHEET

/LOCAL MASTER PLAN

SEPTEMBER 1975 - AUGUST 1978

NAME OF SUPERVISORY UNION/  
SCHOOL DISTRICT

APPROVED BY:

DATE:

CHAIRMAN,  
STAFF DEVELOPMENT COMMITTEE

SUPERINTENDENT  
OF SCHOOLS

CHAIRMAN,  
SCHOOL BOARD

ENDORSED BY:

DATE:

ASSISTANT CHIEF,  
DIVISION OF ADMINISTRATION  
OFFICE OF TEACHER EDUCATION  
AND PROFESSIONAL STANDARDS  
DEPARTMENT OF EDUCATION



BENCHMARKS

to an

APPROVED MASTER PLAN

1. The Staff Development Committee  
Elected \_\_\_\_\_ Organized \_\_\_\_\_ Meetings \_\_\_\_\_  
Comments:
  
2. Committee's Goals and Tasks  
Being identified \_\_\_\_\_ Identified \_\_\_\_\_ Functional \_\_\_\_\_  
Comments:
  
3. Affirmation of Staff Development Committee responsibilities  
By Superintendent \_\_\_\_\_ By School Boards \_\_\_\_\_  
Comments:
  
4. Needs Assessment Activity  
Formulated \_\_\_\_\_ Survey conducted \_\_\_\_\_  
Results Tabulated \_\_\_\_\_ Interpreted \_\_\_\_\_ Priorities Established \_\_\_\_\_  
Comments:
  
5. Staff Development Organization, Process, Procedures  
Being Developed \_\_\_\_\_ Developed \_\_\_\_\_  
Comments:
  
6. Master Plan  
Started \_\_\_\_\_ Completed \_\_\_\_\_ Approved (State) \_\_\_\_\_

Levels of Progress (identify level if started or completed is checked)

- \_\_\_\_\_ Preliminary Investigations
- \_\_\_\_\_ Draft Form
- \_\_\_\_\_ Conducting Hearings
- \_\_\_\_\_ Pilot, Trial Stages
- \_\_\_\_\_ Committee Adoption
- \_\_\_\_\_ Superintendent Approval
- \_\_\_\_\_ Board(s) Approval
- \_\_\_\_\_ Submitted to Office of Teacher Education and Professional Standards

Comments:

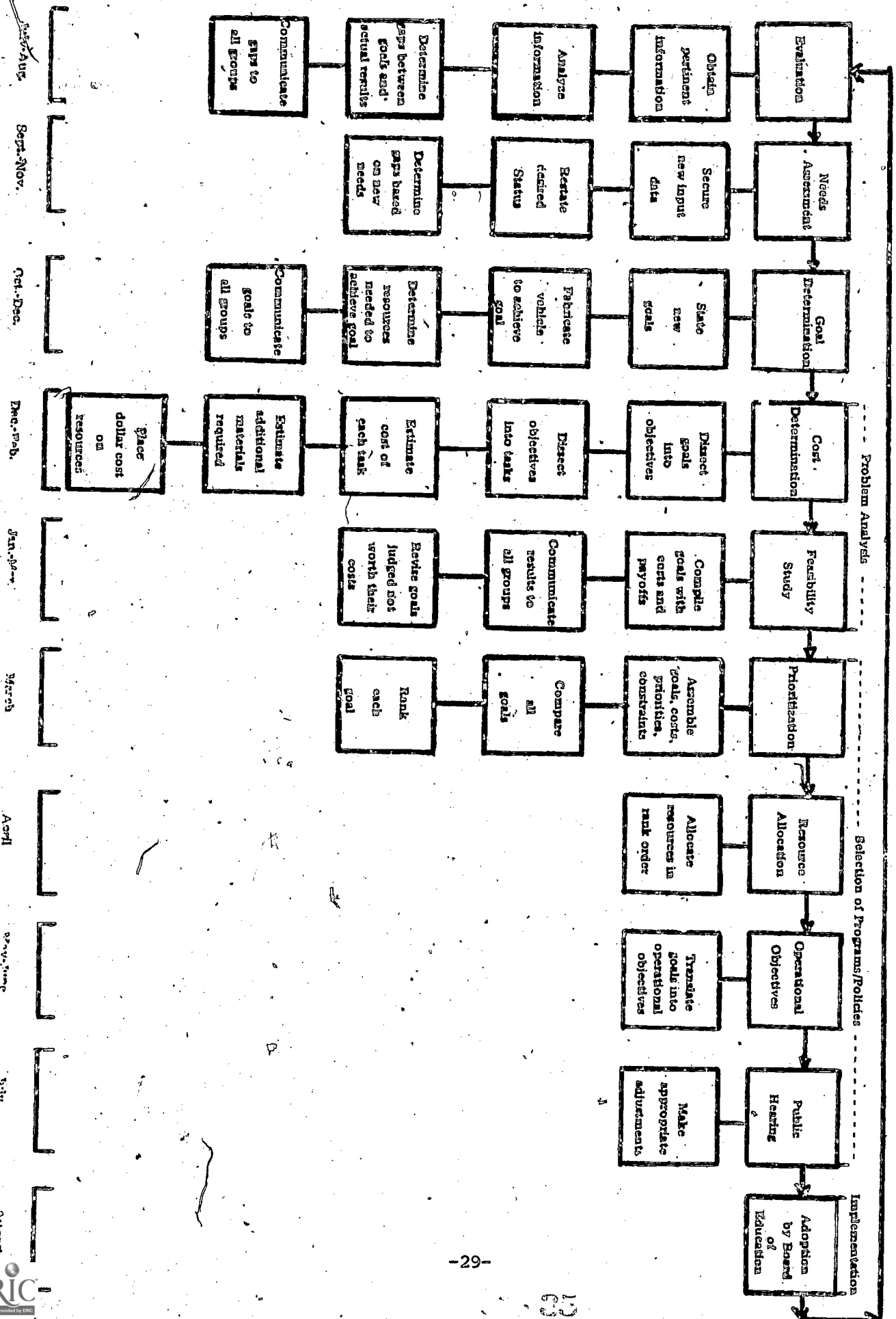
n.b. This form should be completed through a personal or telephone interview with the local Staff Development Chairman or Contact Person. Comments may be qualifying statements to more clearly elaborate on the Benchmark in question.

As an optional procedure, you may want to write a general comment to pull together the important points of the conference.

The information contained on pages 29-38 of this Appendix is taken from Needs Assessment in Education A Planning Handbook for Districts, which can be obtained from the Department of Education, Divisions of Research, Planning and Evaluation/Field Services, Bureau of Planning, 225 West State Street, Trenton, New Jersey 08625

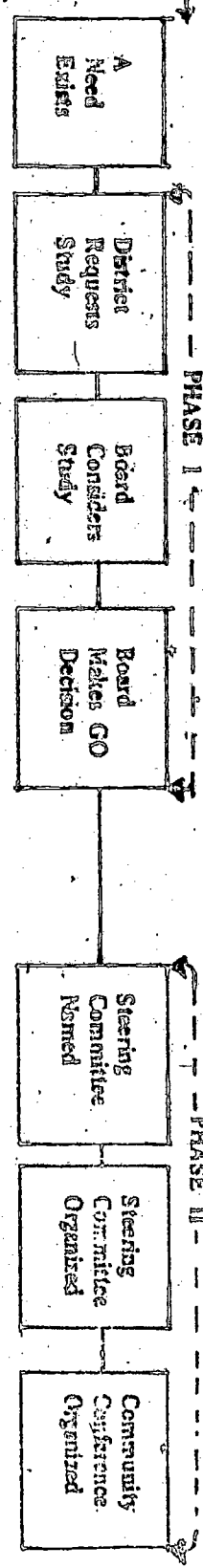
**DALLAS PLANNING MODEL**

APPENDIX C:



PRESNO MODEL NEEDS ASSESSMENT AND GOAL DETERMINATION

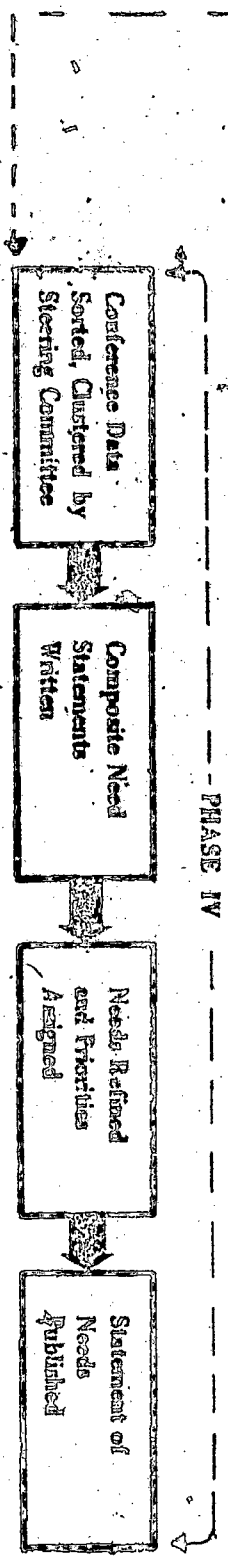
APPENDIX D:



Community Conference Held

Activity "A" - Groups consider question, "What are the things that are keeping our school from doing the job it should do for the students?"

Activity "B" - Groups consider question, "What are the things our school should be doing for the students of this community?"



PHASE V

PHASE VI



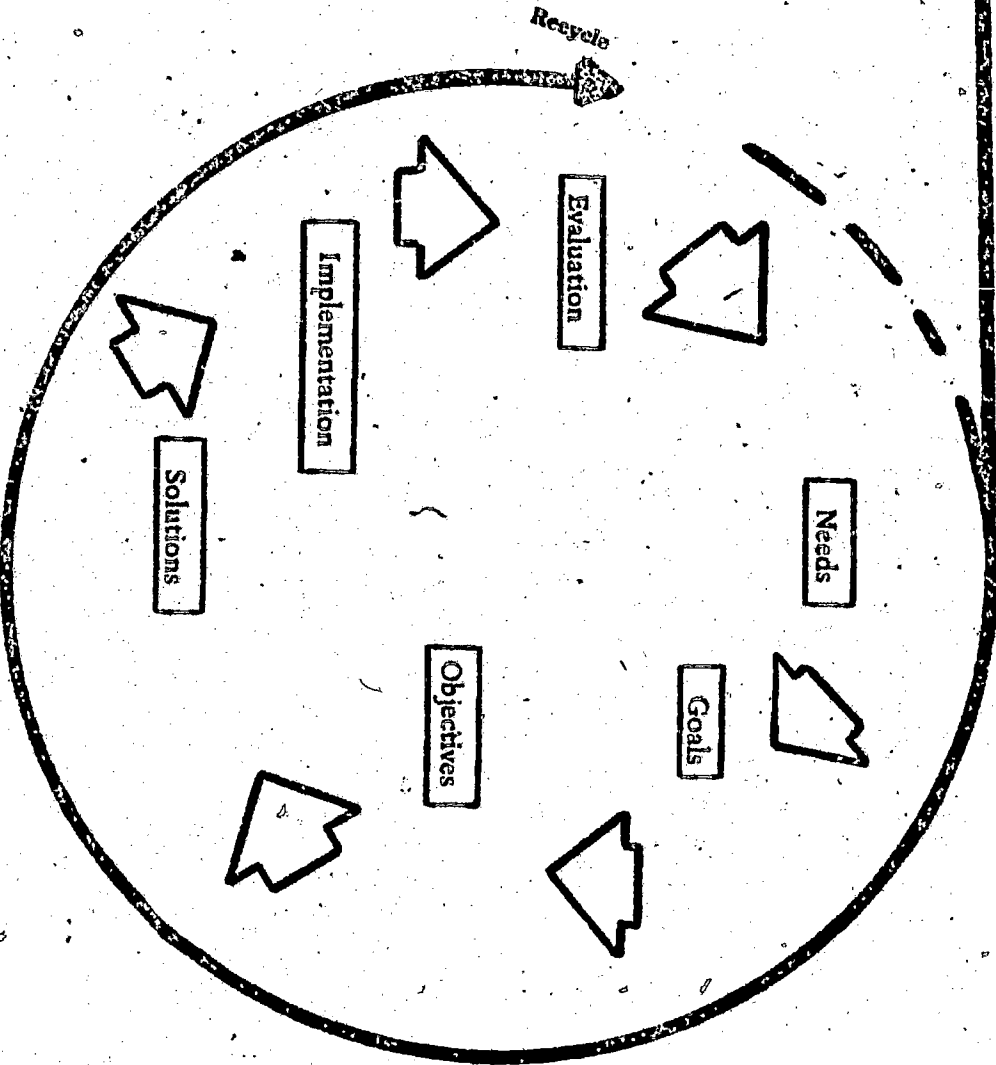
Needs Assessment

Goal Determination

FRESNO PLANNING MODEL

Proceed Through Problem Solving Model

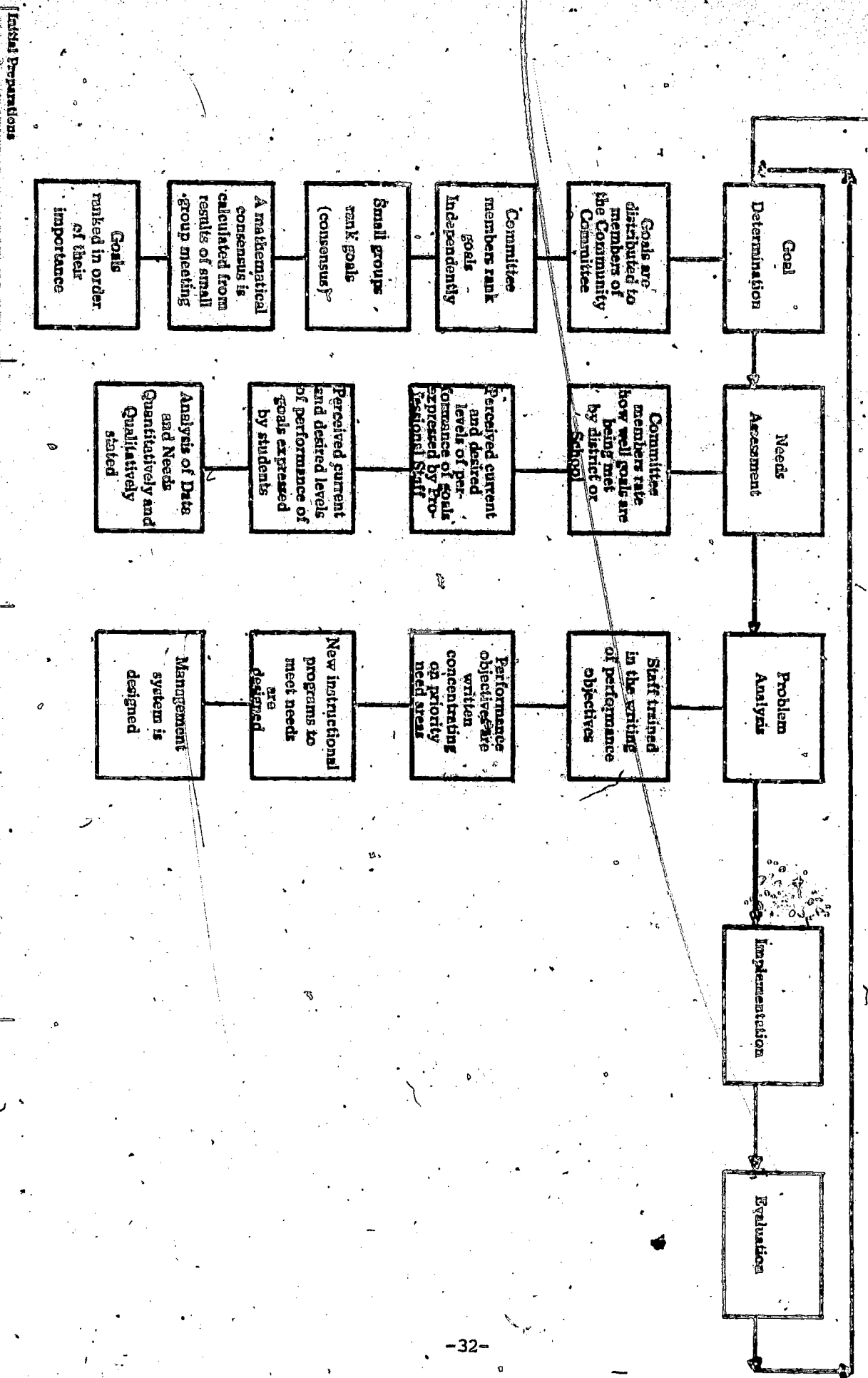
MODIFIED SCHOOL PROGRAM



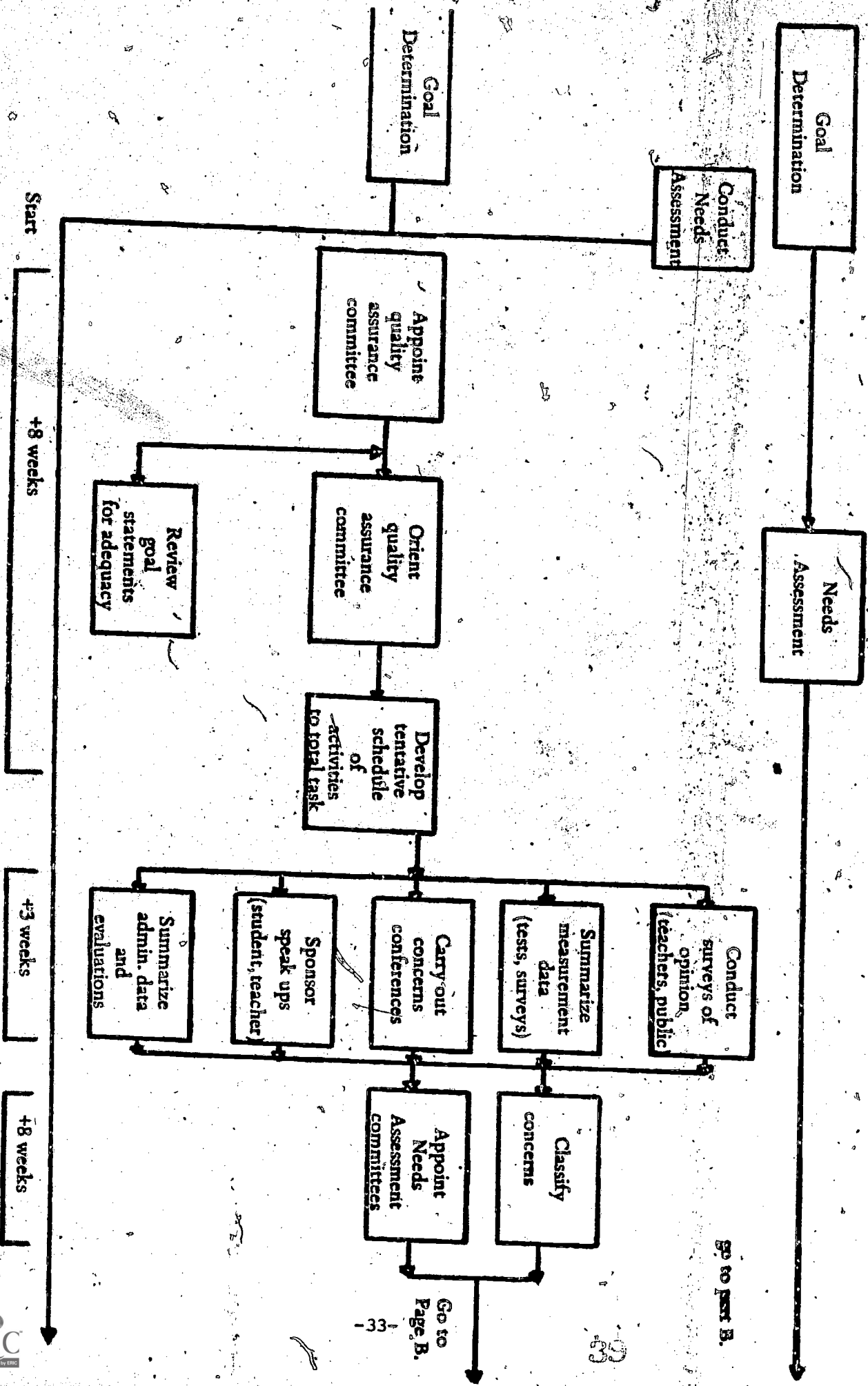
PHI DELTA KAPPA PLANNING MODEL

APPENDIX E:

Commitment to process

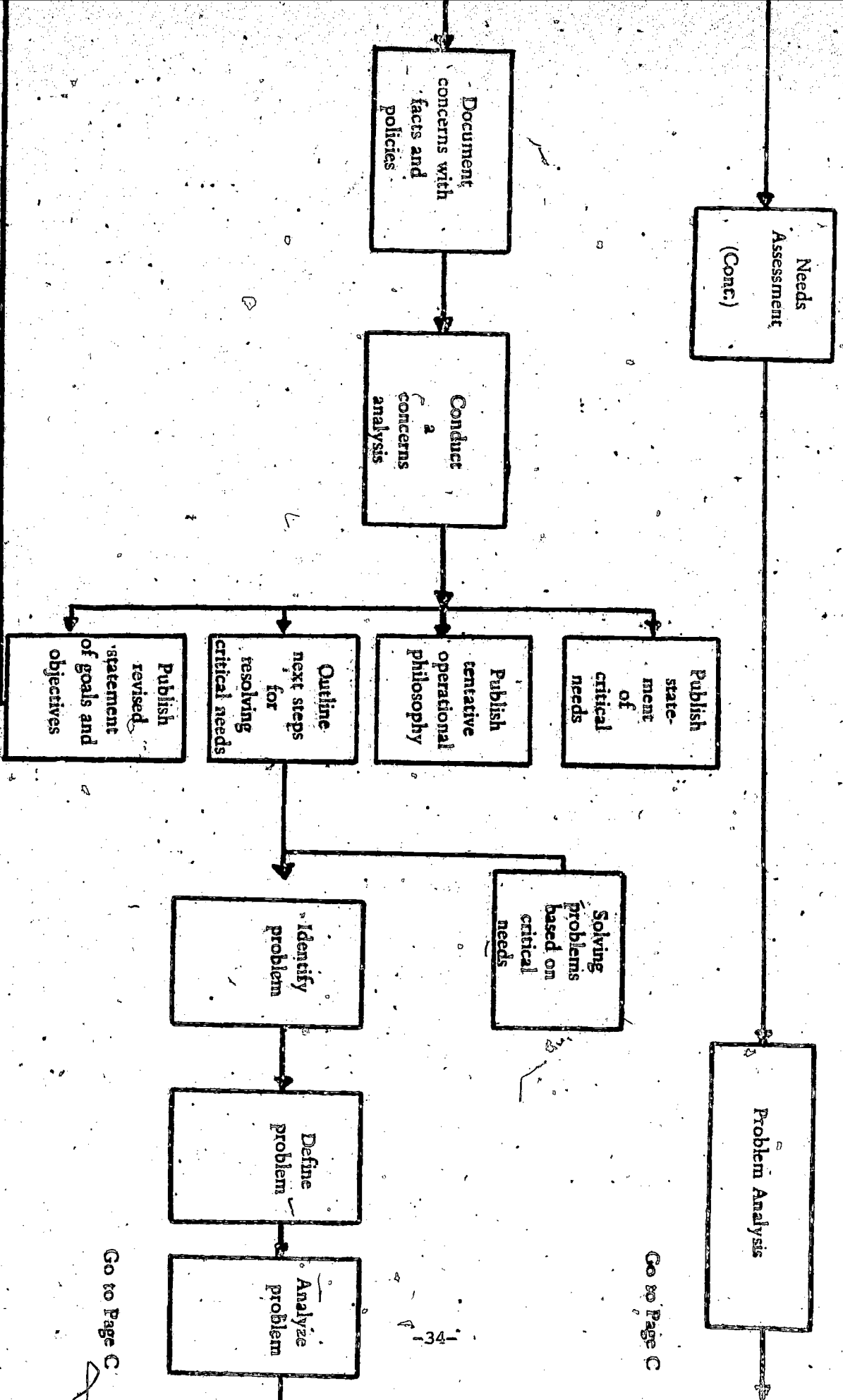


WORLDWIDE PLANNING MODEL: PLAN-ACTIVITY DIAGRAM



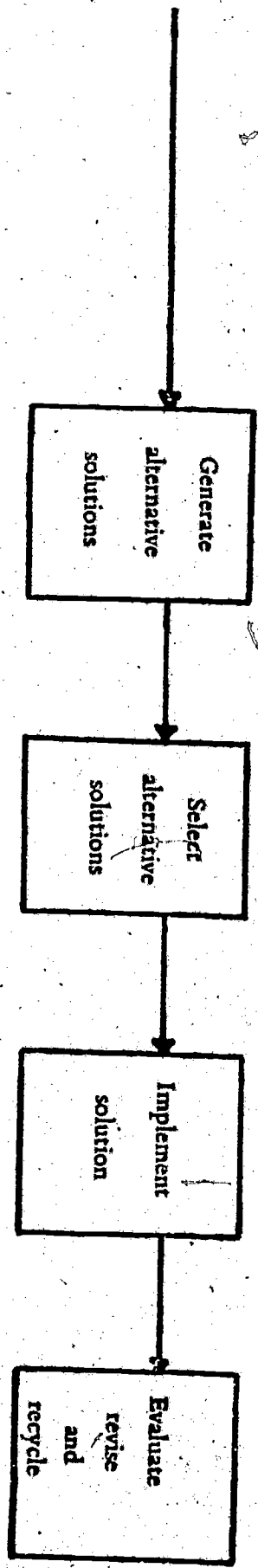
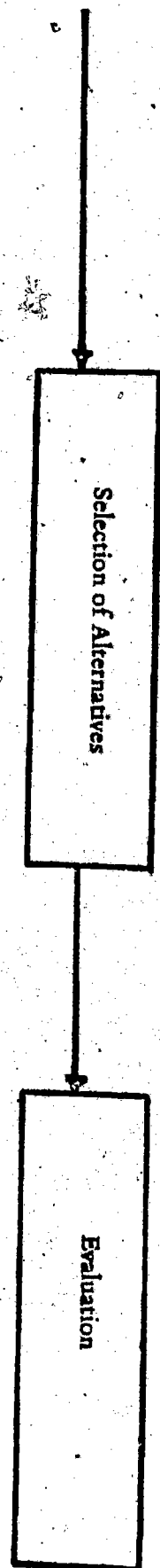


WORLDWIDE PLANNING MODEL: PLAN-ACTIVITY DIAGRAM





WORLDWIDE PLANNING MODEL: PLAN-ACTIVITY DIAGRAM



C. MATRIX OF MODEL CHARACTERISTICS

Question	Dallas	Fresno	PDK	Worldwide
1. Who participates in the process?	Parents, students, teachers, administrators, district employees, Board of Education	Community members - task force of teachers and administrators	Representative teachers, administrators, students, community members.	Representatives from all sectors of education community (i.e., parents, administrators, teachers, students.)
2. What is the extent of community participation?	Can be as broad as desired	Wide spread	40-80 community members	Vary extensive
3. How are community participants selected?	Elected, appointed or voluntary	Open invitation to community	Options - randomly by Superintendent or School Board - Selection based on criteria	By invitation from Needs Assessment Planning Committee
4. Are needs prioritized?	YES	YES	YES	YES
5. What are the tools of the needs assessment?	Needs assessment surveys, Reactionnaire, and Small group investigations.	Speak-ups for community members	Game - a procedure to prioritize goals, and survey of perceptions	Surveys, speak-ups, questionnaires, concerns conferences
6. What is the output of the needs assessment?	Lists of priorities and greatest gaps.	List of prioritized needs	List of prioritized goals, List of prioritized needs	Needs and concerns of community students & teachers; data from existing tests & measures; and administrative data.
7. What happens after the needs assessment?	Program managers select goals for the coming year.	Needs converted into goals. Objectives are written for selected goals. Problem solving techniques used to design programs.	Performance objectives written for existing programs and then matched with goals	Needs converted into goal statements. Problem definition and analysis is carried out.

MATRIX OF MODEL CHARACTERISTICS Cont.

Questions	Dallas	Fresno	PDK	Worldwide
8. How long is a. the whole planning process? b. the needs assessment?	a. one year b. three months	a. one year b. two months	a. one year b. three months	a. two years b. 6-9 months minimum
9. What costs are involved?	Substitute teachers, materials and printing	\$12 for 3 booklets, and supplies. Lunch for one day community meeting.	Materials- \$60 for community kit \$1 for manual on performance objectives	\$37 for needs assessment material \$60 for film strip
10. What staff requirements are there?	One or more person to coordinate the process, depending on the size of the district.	One person to run community conferences. A task force of teachers and administrators	One person to coordinate two community meetings. One person to analyze data from survey	No extra staff is necessary. Need someone on staff who has sufficient time.
11. What explanatory materials are available?	5 booklets available from Delas.	Three booklets available from Fresno.	Kits with all materials. Booklets on writing performance objectives. All available from PDK.	Detailed manual, explanatory filmstrip, available from Worldwide.
12. Are any training programs needed?	No, but orientation to planning necessary for all participants.	No, but background in planning helpful.	Yes, one on goal determination and needs assessment and one on writing performance objectives	Yes.
13. Is the management of the process simple or hard?	No	Moderate	Relatively simple	
14. Are outside consultants needed?	No, if orientation can be done by staff	No	No	Available but not necessary

MATRIX OF MODEL CHARACTERISTICS Cont.

Question	Dallas	Fresno	PDK	Worldwide
15. What is the extent of field testing done for the model?	2 years in Dallas	Limited	Extensive throughout the United States	Extensive throughout the United States

## APPENDIX H: DEVELOPING AND IMPLEMENTING OBJECTIVES

The information contained on pages 39, 40, and 41 is taken from Comprehensive Planning in Education A Planning Handbook for School District, which can be obtained from the Department of Education, Divisions of Research, Planning and Evaluation/Field Services, 225 West State Street, Trenton, New Jersey 08625.

### How are objectives developed to meet the needs?

Each need must first be analyzed by asking and answering questions about it:

- what or who is causing it?
- which need goes with which goal?
- whom does the need affect?
- what is preventing the school from reaching the goal?
- what is helping the school to reach the goal?
- is there anything outside the district which is either helping or hindering goal attainment?

Analyzing each need by answering these and other questions "will provide a natural lead-in to the following phase--the generation of alternatives"--or, in other words, devising different ways to meet the needs.

### How are these different alternatives generated?

"Alternative solutions are generated in various ways. A useful starting point is the process of 'brainstorming'. This is a technique in which alternative solutions are presented as rapidly as possible in a group setting, then discussed, analyzed and refined. Specialists, consultants, various staff members and task forces may also be used in developing alternative solutions to district problems. Research sources such as ERIC should be investigated. Alternative methods are analyzed in terms of effectiveness (quality), cost and time required (resources), consequences on other goals, impact (quantity), political feasibility and other side effects, both positive and negative.

"Although brainstorming may be the initial step in developing alternatives, it should be clear that a large number of technical tools should be applied during this phase. These include program budgeting, PERT, cost-benefit analysis, projective techniques and research and literature reviews. The outcome of this stage should be a group of alternative solutions of courses of action, their cost, and their estimated impact."

### Which alternatives should be chosen as objectives to meet the needs?

"The choice is ultimately made by the decision-makers - the board of education and the superintendent. However, they may choose to delegate this function to staff or even to the same group involved in the previous stages of the planning process or to ask them for recommendations. Although the responsibility for decisions rests at the highest levels, we do know that a program, especially one involving change, has the best chance of success if those directly affected play a major role in its planning.

"Here again, there is a great deal of latitude in the method which can be used in selecting among alternatives." Although rational techniques are available as aids, many decision-makers will no doubt still prefer to 'fly by the seat of their pants'. A more logical approach is to employ some variation of a ranking approach.

"For example, the model developed in Fresno, California, provides for the assignment of an arbitrary score (ranging from plus 4 positive effect to minus 4 negative effect) to each of the proposed solutions. A separate ranking is assigned for each of a variety of factors: staff reaction, community reaction, student reaction, costs, availability of resources, time needed to implement and success of similar ventures. It is then possible to derive a cumulative score for each alternative, and rank them. The factors to be rated may vary to suit the decision-makers, and more sophisticated variations can provide for a system of weighting factors. Table II contains an example of the Fresno decision-making for the problem of reducing dropout rates."

### How are objectives best implemented?

To best insure that chosen objectives do meet the needs of the district, several steps should be taken:

- outline the objectives to be implemented including all the steps involved
- "consider all the groups and agencies which will be affected by the objectives
- "identify all the activities and sub-activities and the persons who will be responsible for carrying out each of these"
- decide on a chronological sequence of events, including target dates
- "In addition, a good implementation plan provides for ongoing monitoring during this phase. The feedback can then be used to keep the plan 'on course'."



Table II: Alternative Selection Matrix

Problem: To reduce the dropout rate by 25% per year.

Proposed Solutions	CONSIDERATIONS							TOTALS	RANK
	Staff Reaction	Community Reaction	Students Reaction	Costs	Availability - Resources	Time to Implement	Success - Similar		
Regional Vocational Education	+3	+3	+3	-2	+2	-1	+3	+11	1
Reduce Class Size	+3	+1	+2	-4	0	0	+1	+3	4
More Counselors	+3	+1	+1	-4	0	0	+1	+2	5
Quarters, Half-day Classes	+2	+1	+2	0	0	-1	+1	+5	3
Learning Teams	+2	+1	+3	-2	0	0	+1	+5	3
Select Own Advisor	+2	+2	+3	0	+2	0	+1	+10	2

In the above case the task force elects to propose a regional vocational center and a system in which students may select their own advisors from among all certificated members of the staff. It will also give serious consideration to the establishment of learning teams and realignment of the school calendar to establish a quarter system with half-day classes.

Source: From Goals to Action (Fresno Model) p. 29



# NEW HAMPSHIRE EDUCATIONAL RESOURCE CATALOG



OFFICE OF TEACHER EDUCATION AND PROFESSIONAL STANDARDS - PART II: PERSONNEL CONTACTS  
DEPARTMENT OF EDUCATION  
CONCORD, NEW HAMPSHIRE  
SEPTEMBER, 1974

GOVERNOR OF NEW HAMPSHIRE

Meldrim Thomson, Jr.

THE EXECUTIVE COUNCIL

District No. 1	Lyle E. Herson, Groveton
District No. 2	James H. Hayes, Concord
District No. 3	Robert E. Whalen, Portsmouth
District No. 4	John F. Bridges, Bedford
District No. 5	Bernard A. Streeter, Jr., Nashua

Publication of this document is in part supported  
by funds from New England Interstate 505.

NEW HAMPSHIRE  
STATE BOARD OF EDUCATION  
1974-75

APPOINTMENT

TERM EXPIRES

1973	William P. Bittenbender, Deering Chairman	1978
1970	Donald E. Borchers, Berlin	1976
1974	Mrs. Catherine R. Caouette, Contoocook	1979
1965	Gerard F. Cullerot, D.D.S., Manchester	1977
1971	Daniel E. Gosselin, Enfield	1976
1969	Edward C. Sweeney, Jr., Keene	1974
1970	Mrs. Jean S. Tufts, Exeter	1975

COMMISSIONER OF EDUCATION

Newell J. Paire

DEPUTY COMMISSIONER

Robert L. Brunelle

CHIEF, DIVISION OF ADMINISTRATION

Paul R. Fillion

NEW HAMPSHIRE EDUCATIONAL RESOURCE CATALOG

PART II

EDUCATIONAL RESOURCE PEOPLE

NEW HAMPSHIRE STATE DEPARTMENT OF EDUCATION  
OFFICE OF TEACHER EDUCATION AND PROFESSIONAL STANDARDS

Harvey H. Harkness, Jr., Director  
Douglas H. Brown, Assistant Director  
John L. Davy, Consultant  
Carolyn L. Sweetser, NEPTE Field Agent

Contributors:

Nancy Rambusch Paula Goddard

Dorothy Hart

## TABLE OF CONTENTS

ACTIVITY - CENTERED CLASSROOMS . . . . .	1
ADMINISTRATION . . . . .	1
ADULT EDUCATION . . . . .	2
ALTERNATIVE EDUCATION	
Individualized Learning . . . . .	2
Open Classroom . . . . .	3
Philosophy . . . . .	4
ANTIQUES . . . . .	4
ARCHITECTURE . . . . .	5
ARTS/CRAFTS . . . . .	5
BEHAVIOR . . . . .	5
BUSINESS . . . . .	6
CAREER COUNSELING . . . . .	6
CHANGE . . . . .	6
COMMUNICATION SKILLS . . . . .	7
COMMUNITY INVOLVEMENT . . . . .	8
COMPUTER PROGRAMMING . . . . .	8
CONTRACTS . . . . .	9
COOPERATIVE & DISTRIBUTIVE EDUCATION . . . . .	9
CREATIVITY, CREATIVE EXPRESSION . . . . .	9
CURRICULUM . . . . .	10
DAY CARE . . . . .	12
DECORATION, DISPLAYS . . . . .	12
DISSEMINATION OF INFORMATION . . . . .	12
DRIVER/SAFETY EDUCATION . . . . .	13

EARLY CHILDHOOD . . . . .	13
EDUCATIONAL MATERIALS . . . . .	14
ERIC . . . . .	15
EVALUATION/RECORDING PROCEDURES . . . . .	15
FACILITIES . . . . .	16
FILM MAKING . . . . .	17
FINANCE . . . . .	17
FIRST YEAR TEACHER INSTITUTES . . . . .	18
FOLKLORE . . . . .	18
FOREIGN LANGUAGES . . . . .	18
GROUPING . . . . .	19
HEALTH . . . . .	19
HOME ECONOMICS EDUCATION . . . . .	19
INDUSTRIAL ARTS EDUCATION . . . . .	20
INFORMATION SYSTEMS . . . . .	20
INTERPERSONAL RELATIONS . . . . .	20
LANGUAGE ARTS . . . . .	22
LIBRARY SERVICES . . . . .	24
LOW-INCOME, DISADVANTAGED, NONSUCCESSFUL STUDENT . . . . .	24
MATHEMATICS . . . . .	25
MEDIA EQUIPMENT . . . . .	26
MODELS OF TEACHER PREPARATION . . . . .	26
MONTESSORI EDUCATION . . . . .	26
MOTIVATION . . . . .	27
NEEDS ASSESSMENT . . . . .	27
NEWS MEDIA . . . . .	27

NURSING EDUCATION . . . . .	28
OBJECTIVES, INSTRUCTIONAL . . . . .	28
ORGANIZATION DEVELOPMENT . . . . .	28
PARAPROFESSIONALS . . . . .	29
PARENTS . . . . .	29
PEER INSTRUCTION . . . . .	29
PHONICS . . . . .	30
PHOTOGRAPHY . . . . .	30
PHYSICAL EDUCATION . . . . .	30
POST-SECONDARY EDUCATION . . . . .	31
PUBLIC RELATIONS . . . . .	31
READINESS . . . . .	31
READING . . . . .	32
RESEARCH . . . . .	33
RESOURCE CENTERS . . . . .	33
SCHOOL BOARDS . . . . .	33
SCIENCE . . . . .	34
SOCIAL STUDIES . . . . .	35
SOCIAL WORK . . . . .	36
SPECIAL EDUCATION . . . . .	36
TEAM TEACHING . . . . .	36
TRADES/INDUSTRY EDUCATION . . . . .	37
VOCATIONAL COUNSELING . . . . .	37
VOCATIONAL-TECHNICAL EDUCATION . . . . .	37
VOLUNTEERS . . . . .	39
WORK-STUDY PROGRAM . . . . .	39
WRITING OF . . . . .	39



## ACTIVITY - CENTERED CLASSROOMS

Michael Andrew, Professor  
Dept. of Education  
Morrill Hall  
University of New Hampshire  
Durham, N. H. 03824

Tel.: 862-2310

Activity Approach to Elementary  
Science: Workshop presenting  
demonstrations of activity  
centered science approach for  
elementary school teachers.

Thomas McAdam, Principal  
Oyster River Elementary School  
Durham, N. H. 03824

Tel.: 868-2155

Project Center-Multi-age  
Classrooms Ages 8-9-10

## ADMINISTRATION

Robert J. Ross, Principal

Broken Ground School  
Portsmouth Street  
Concord, N. H. 03301

Tel.: 224-4019

The Changing Role of the  
Administrator

Gordon R. Tate, Assistant Chief  
Div. of Administration

N. H. Dept. of Education  
410 State House Annex  
Concord, N. H. 03301

Tel.: 271-3620

Facilities, Administration

Douglas Brown, Assistant Director  
Teacher Education & Professional  
Standards

N. H. Dept. of Education  
410 State House Annex  
Concord, N. H. 03301

Tel.: 271-2407

Administration

ADMINISTRATION (cont'd)

Sherman V. Wheeler, Consultant  
Educational Information

Administrative Systems:  
College & University

N. H. Dept. of Education  
410 State House Annex  
Concord, N. H. 03301

Tel.: 271-2778

ADULT EDUCATION

John E. Sideris, Consultant  
Adult Basic Education

Adult Basic Education:  
Adult High School, Diploma Program  
Program for High School  
Equivalency Certificate

N. H. Dept. of Education  
64 North Main Street  
Concord, N. H. 03301

Tel.: 271-2617

Thomas F. Sousa, Consultant  
Adult Basic Education

Adult & Community Education

N. H. Dept. of Education  
64 North Main Street  
Concord, N. H. 03301

Tel.: 271-2617

ALTERNATE EDUCATION

Individualized Learning

John Lowy, Principal

Workshop Topic:  
Match Skill Continuums  
Reading Skill Continuums  
Individualized Learning Programs

Mast Way School  
Durham, N. H. 03824

Tel.: 659-3001

John H. Powers, Superintendent

Model Philosophy - Developing  
and Implementing a School District  
Philosophy of Individualized  
Learning with a Large Degree of  
Success and in an Accountable  
Manner

Supervisory Union 56  
Somersworth, N. H. 03878

Tel.: 692-2169

ALTERNATIVE EDUCATION

Individualized Learning (cont'd)

Jerry Rittersdorf, Principal

Somersworth Middle School  
Somersworth, N. H. 03878

Tel.: 692-2126

Development and Implementation  
of Middle School Curriculum  
Individualized Program  
Instructional Program  
Instructional Objectives All  
Subject Areas - Model Curriculum  
Support Unit

Robert J. Ross, Principal

Broken Ground School  
Portsmouth Street  
Concord, N. H. 03301

Tel.: 224-4019

Individual Prescribed Instruction  
Individual Guidance Instruction:  
Philosophy, Curriculum Organization,  
Evaluation

John E. Bean, Jr., Consultant  
Disadvantaged & Handicapped

N. H. Dept. of Education  
105 Loudon Road  
Concord, N. H. 03301

Tel.: 271-3451

Development of Individualized  
Programs & Material

Leon Worthley, Assistant Director  
Title III ESEA

N. H. Dept. of Education  
64 North Main Street  
Concord, N. H. 03301

Tel.: 271-3481

Individualized Instruction

ALTERNATIVE EDUCATION

Open Classroom

Tony Iorio

Rollinsford School  
Rollinsford, N. H. 03869

Tel.: 742-2351

Open Classroom Organization  
Intermediate Grades

ALTERNATIVE EDUCATION

Open Classroom

Joanne Tuttle

Rollinsford School  
Rollinsford, N. H. 03869

Tel.: 742-2351

Open Classroom Organization  
Intermediate Grades

Mrs. Barbara Willis

(formerly of)  
Henniker Elementary School

Williams Road  
Hillsboro, N. H. 03244

Tel.: 464-5974

Developing Upgraded Program

ALTERNATIVE EDUCATION

Philosophy

Leon Worthley, Assistant Director  
Title III, ESEA

N. H. Dept. of Education  
64 North Main Street  
Concord, N. H. 03301

Tel.: 271-3481

Alternative Education

ANTIQUES

Joanne F. Baker, Consultant  
English & Reading

N. H. Dept. of Education  
64 North Main Street  
Concord, N. H. 03301

Tel.: 271-3747

Antique Furniture:  
Slide Collection

## ARCHITECTURE

Joanne F. Baker, Consultant  
English & Reading

Domestic Architecture:  
Slide collection

N. H. Dept. of Education  
64 North Main Street  
Concord, N. H. 03301

Tel.: 271-3747

## ARTS/CRAFTS

Alice A. D. Baumgarner, Consultant  
Art & Music

Visual Arts & Crafts

N. H. Dept. of Education  
64 North Main Street  
Concord, N. H. 03301

Tel.: 271-2402

Horace L. Roberts, Consultant  
Instructional Media

Arts & Crafts

N. H. Dept. of Education  
64 North Main Street  
Concord, N. H. 03301

Tel.: 271-3578

## BEHAVIOR

Ross Lurgio

Behavior

Manchester School Dept.  
Manchester, N. H. 03103

Tel.: 688-2850

McCurdy Road  
New Boston, N. H. 03070

Tel.: 487-2458

Daniel M. Smith

University of New Hampshire  
Dept. of Education  
Morrill Hall  
Durham, N. H. 03824

Behavior Modification:  
Classroom Contingency Management  
and Desensitization. Uses film,  
video-tape, innovative comic-book  
style text, programmed text,  
audio-tape, lecture discussions.

Tel.: 862-1730

## BEHAVIOR (cont'd)

Gerald J. Pine, Chairman

Dept. of Education  
Morrill Hall  
University of N. H.  
Durham, N. H. 03824

Tel.: 862-2310

Teacher Effectiveness Training  
A training module designed to  
develop some specific communication  
skills which can be used in the  
classroom to obviate behavior  
problems.

## BUSINESS

Donald Sutherland, Consultant  
Continuing Education & Special  
Services

N. H. Dept. of Education  
163 Loudon Road  
Concord, N. H. 03301

Tel.: 271-2727

Liason with Business and Industry:  
Personnel administration(industry)  
Student placement (college level)

## CAREER COUNSELING

Josephine Hayslip  
Voc-Teach Guidance Counselor

N. H. Dept. of Education  
64 North Main Street  
Concord, N. H. 03301

Tel.: 271-2664

Career and Vocational Guidance:  
Counseling, placement

## CHANGE

Richard E. Mandeville, Consultant  
Project Analysis & Development

N. H. Dept. of Education  
163 Loudon Road  
Concord, N. H. 03301

Tel.: 271-2727

Philosophy of Change

John B. Nay, Director  
Title III ESEA

N. H. Dept. of Education  
64 North Main Street  
Concord, N. H. 03301

Tel.: 271-3481

The Change Process

CHANGE (cont'd)

H. Stuart Pickard, Director  
Planning & Evaluation Unit

Process of Change

N. H. Dept. of Education  
410 State House Annex  
Concord, N. H. 03301

Tel.: 271-2340

COMMUNICATION SKILLS

John Ahern

Rt. 1, Box 218  
Weare, N. H. 03281

Tel.: 529-2394

A Sense of Humor-A Sense of  
Balance  
Classroom Interaction

Judith Horrigan, Counselor

Oyster River Middle School  
Durham, N. H. 03824

Tel.: 868-2820

Communication Skills

H. Stuart Pickard, Director  
Planning & Evaluation Unit

N. H. Dept. of Education  
410 State House Annex  
Concord, N. H. 03301

Tel.: 271-2340

Communication

Gerald J. Pine, Chairman

Dept. of Education  
Morrill Hall  
University of New Hampshire  
Durham, N. H. 03824

Tel.: 862-2310

Teacher Effectiveness Training  
A training module designed to  
develop some specific communication  
skills which can be used in the  
classroom to obviate behavior  
problems.



## COMMUNICATION SKILLS (cont'd)

Leon Worthly, Assistant Director  
Title III ESEA

Group Process

Dept. of Education  
64 North Main St.  
Concord, N. H. 03301

Tel.: 271-3481

See Also: INTERPERSONAL RELATIONS

## COMMUNITY INVOLVEMENT

Roland Goddu, Director

Community Involvement

NEPTE  
Pettee Brook Offices  
Durham, N. H. 03824

Tel.: 868-5566

John B. Nay, Director  
Title III ESEA

Shared Services & Community  
Development

N. H. Dept. of Education  
64 North Main Street  
Concord, N. H. 03301

Tel.: 271-3481

Leon Worthley, Assistant Director  
Title III ESEA

Community Schools

N. H. Dept. of Education  
64 North Main Street  
Concord, N. H. 03301

Tel.: 271-3481

## COMPUTER PROGRAMMING

James Hamilton

Fundamental Principles of  
Computers

Hillsboro-Deering  
Elementary School  
Hillsboro, N. H. 03244

Tel.: 464-5904

P. O. Box 699  
Hillsboro, N. H. 03244

Tel.: 464-3540

COMPUTER PROGRAMMING (cont'd)

Barbara Hill

Oyster River High School  
Durham, N. H. 03824

Tel.: 868-2375

Math: Computer Implementation  
in a High School Curriculum

Robert P. Stocking, Consultant  
Exemplary & Developmental Programs

N. H. Dept. of Education  
105 Loudon Road  
Concord, N. H. 03301

Tel.: 271-2197

Computer Programming  
Data Analysis & Presentation  
Management Information Systems  
Analysis and Design

CONTRACTS

John Lowy, Principal

Mast Way School  
Durham, N. H. 03824

Tel.: 659-3001

Developing Contracts with  
Students and Teachers

COOPERATIVE & DISTRIBUTIVE EDUCATION

Rafael Adames, Consultant  
Cooperative & Distributive  
Education

N. H. Dept. of Education  
105 Loudon Road  
Concord, N. H. 03301

Tel.: 271-2479

Cooperative & Distributive  
Education

CREATIVITY - CREATIVE EXPRESSION

Mel Sneed

Hillsboro-Deering  
Elementary School  
Hillsboro, N. H. 03244

Tel.: 464-5904

Terrace Road  
Franklin, N. H. 03235

Tel.: 934-3685

Creative Expression through  
Social Studies and Use of  
National Geographic School  
Bulletin, 1-2 Hour Session

CREATIVITY - CREATIVE EXPRESSION (cont'd)

Leon Worthley, Assistant Director  
Title III ESEA

Creativity

N. H. Dept. of Education  
64 North Main Street  
Concord, N. H. 03301

Tel.: 271-3481

CURRICULUM

Frank W. Brown, Chief  
Division of Instruction

Instruction

N. H. Dept. of Education  
64 North Main Street  
Concord, N. H. 03301

Tel.: 271-2529

John Carney

Department of Education  
Morrill Hall  
University of New Hampshire  
Durham, N. H. 03824

Tel.: 862-2310

Teaching Reading in the Content Areas: A workshop describing an instructional format in which aspects of the Reading Process and the Concepts embodied in the subject matter of the Secondary School Curriculum are integrated in such a manner that reading skills inherent in the material and essential to its understanding are taught functionally through the content with the purpose of promoting the acquisition of the concepts.

Michael Diamonti

Department of Education  
Morrill Hall  
University of New Hampshire  
Durham, N. H. 03824

Tel.: 862-2310

Hidden Curriculum: The hidden curriculum as it exists in classroom organization. Philip Jackson in Life in Classrooms deals extensively with the systems of crowds, praise, and power in classrooms. The hidden curriculum as it exists in the way subjects are taught. Two specific subject areas (Social Science and Science) will be investigated to explain how the material in these subjects and the way it is taught can lead to political quiescence and the acceptance by students of a perspective on social and intellectual conflict which acts to maintain the existing distribution of power in a society.

CURRICULUM (cont'd)

James Dodge, Principal

Oyster River Middle School  
Durham, N. H. 03824

Tel.: 868-2820

John G. Economopoulos, Consultant  
General Elementary

N. H. Dept. of Education  
64 North Main Street  
Concord, N. H. 03301

Tel.: 271-3120

Cynthia Mowles, Consultant  
Early Childhood Education

N. H. Dept. of Education  
64 North Main Street  
Concord, N. H. 03301

Tel.: 271-2796

H. Stuart Pickard, Director  
Planning & Evaluation Unit

N. H. Dept. of Education  
410 State House Annex  
Concord, N. H. 03301

Tel.: 271-2340

Jerry Rittersdorf, Principal

Somersworth Middle School  
Somersworth, N. H. 03878

Tel.: 692-2126

John E. Bean, Jr., Consultant  
Disadvantaged & Handicapped

N. H. Dept. of Education  
105 Loudon Rd.  
Concord, N. H. 03301

Tel.: 271-3451

Middle School Curriculum Development

Leadership and Advisory Service:  
Improvement and evaluation of  
elementary schools, in-service  
programs; approval and consultant  
services for private elementary  
schools

Early Childhood Education: Early  
reading/language development  
General Elementary Education

Curriculum Development

Development and Implementation of  
Middle School Curriculum and Model  
Curriculum Support Unit

Performance-Based Curriculum  
Development

## CURRICULUM (cont'd)

Douglas Brown, Assistant Director  
Teacher Education & Professional  
Standards

Curriculum (General)

N. H. Dept. of Education  
410 State House Annex  
Concord, N. H. 03301

Tel.: 271-2407

Carl Hanover, Consultant  
Industrial Arts Education

Contemporary Curriculum  
Development

N. H. Dept. of Education  
105 Loudon Road  
Concord, N. H. 03301

Tel.: 271-3587

## DAY CARE

Ginny Slayton

Day Care

Division of Welfare  
8 Loudon Road  
Concord, N. H. 03301

Tel.: 271-2370

## DECORATION, DISPLAYS

John Ahern

Classroom Decorations and  
Displays

Rt. 1, Box 218  
Weare, N. H. 03281

Tel.: 529-2394

## DISSEMINATION OF INFORMATION

Robert M. Trombly, Consultant  
Twin State Education Information  
System

ERIC Dissemination

N. H. Dept. of Education  
105 Loudon Road  
Concord, N. H. 03301

Tel.: 271-2276

## DRIVER/SAFETY EDUCATION

John S. Groves, Consultant  
Safety & Driver Education

N. H. Dept. of Education  
64 North Main Street  
Concord, N. H. 03301

Tel.: 271-3779

Safety Education Programs  
Curriculum Development:  
Workshops, driver education,  
motorcycle driver education,  
school bus & Home safety

## EARLY CHILDHOOD

Bernice Backon  
Title 1

Rumford School  
Monroe Street  
Concord, N. H. 03301

Tel.: 225-6181

Early Childhood Development

Mary Stuart Gile, Consultant  
Title 1 ESEA

Dept. of Education  
64 North Main Street  
Concord, N. H. 03301

Tel.: 271-2717

Early Childhood Education:  
Creative movement experiences  
for young children

Doris Granger

Mast Way School  
Durham, N. H. 03824

Tel.: 659-3001

Developmental Approach in  
Early Childhood Education

Cynthia Mowles, Consultant  
Early Childhood Education

N. H. Dept. of Education  
64 North Main Street  
Concord, N. H. 03301

Early Childhood Education:  
Early reading/language development

EARLY CHILDHOOD (cont'd)

Nancy Sandberg

Early Childhood

Notre Dame College  
2321 Elm Street  
Manchester, N. H. 03104

Tel.: 669-4298

Box 165, Bow Lake  
Strafford, N. H. 03884

Tel.: 664-9059

Herbert Tilly

Early Childhood Education  
(Vermont)

Director of Planning  
Department of Education  
Montpelier, Vermont

Tel.: (802) 223-2311

EDUCATIONAL MATERIALS

Marjorie Mollison

Making Educational Materials  
Using Industrial Scrap - Free  
Junk  
Two three hour sessions

Henniker Elementary School  
Henniker, N. H. 03242

Tel.: 428-7256

88 Washington Street  
Concord, N. H. 03301

Tel.: 224-5648

T. Carveth Paul

Use of Media Equipment and Software  
Production  
One-half hour sessions

Henniker High School  
Henniker, N. H. 03242

Tel.: 428-3476

Colby Hill Road  
Henniker, N. H. 03242

Tel.: 428-7680



ERIC

Robert M. Trombly, Consultant  
Twin State Education Information  
System

ERIC Dissemination

N. H. Dept. of Education  
105 Loudon Road  
Concord, N. H. 03301

Tel.: 271-2276

EVALUATION/RECORDING PROCEDURES

John G. Economopoulos, Consultant  
General Elementary

Improvement and Evaluation of  
Elementary Schools

N. H. Dept. of Education  
64 North Main Street  
Concord, N. H. 03301

Tel.: 271-3120

Roland Goddu, Director

Non-traditional evaluation and  
recording procedures

NEPTE  
Pettee Brook Offices  
Durham, N. H. 03824

Tel.: 868-5566

Richard B. Hodges, Director  
Title I ESEA

Program Management:  
Evaluation

N. H. Dept. of Education  
64 North Main Street  
Concord, N. H. 03301

Tel.: 271-2717

John B. Nay, Director  
Title III ESEA

Evaluation Strategies

N. H. Dept. of Education  
64 North Main Street  
Concord, N. H. 03301

Tel.: 271-2481

EVALUATION/RECORDING PROCEDURES (cont'd)

H. Stuart Pickard, Director  
Planning & Evaluation Unit

Evaluation

N. H. Dept. of Education  
410 State House Annex  
Concord, N. H. 03301

Tel.: 271-2340

Robert Schweiker

Evaluation: measurement, testing

12 Chapel Street  
Concord, N. H. 03301

Robert P. Stocking, Consultant  
Exemplary & Developmental Programs

Education Research & Evaluation

N. H. Dept. of Education  
105 Loudon Road  
Concord, N. H. 03301

Tel.: 271-2197

Leon Worthley, Assistant Director  
Title III ESEA

Process Evaluation

N. H. Dept. of Education  
64 North Main Street  
Concord, N. H. 03301

Tel.: 271-3481

Sherman V. Wheeler, Consultant  
Educational Information

Information, Scheduling, Record  
Systems

N. H. Dept. of Education  
410 State House Annex  
Concord, N. H. 03301

Tel.: 271-2778

FACILITIES

Carl H. Hanover, Consultant  
Industrial Arts Education

Facilities Planning

N. H. Dept. of Education  
105 Loudon Road  
Concord, N. H. 03301

Tel.: 271-3587

FACILITIES (cont'd)

Walter E. Miner, Consultant  
Trade & Industry

Facilities Planning

N. H. Dept. of Education  
105 Loudon Road  
Concord, N. H. 03301

Tel.: 271-3587

Gordon R. Tate, Assistant Chief  
Division of Administration

Facilities

N. H. Dept. of Education  
410 State House Annex  
Concord, N. H. 03301

Tel.: 271-3620

FILM MAKING

Richard Tappan

Oyster River Middle School  
Durham, N. H. 03824

Tel.: 868-2820

Film Making as a Part of  
the Curriculum - Language Arts

FINANCE

Paul R. Fillion, Chief  
Division of Administration

School Finance

N. H. Dept. of Education  
410 State House Annex  
Concord, N. H. 03301

Tel.: 271-3453

Richard E. Mandeville, Consultant  
Project Analysis & Development

Federal Aid to Education

N. H. Dept. of Education  
163 Loudon Road  
Concord, N. H. 03301

Tel.: 271-2727

FINANCE (cont'd)

Douglas Brown, Assistant Director  
Teacher Education & Professional  
Standards Finance

N. H. Dept. of Education  
410 State House Annex  
Concord, N. H. 03301

Tel.: 271-2407

Richard B. Hodges, Director  
Title I ESEA Federal Fund Activities

N. H. Dept. of Education  
64 North Main Street  
Concord, N. H. 03301

Tel.: 271-2717

FIRST YEAR TEACHER INSTITUTES

Blakely Babcock

New Hampton, N. H. 03842

First Year Teacher Institute:  
Involved in this under the National  
Association of Independent Schools

Mark Jobson

Proctor Academy  
Andover, N. H. 03216

First Year Teacher Institute:  
Involved in this under the National  
Association of Independent Schools

FOLKLORE

Linda Morley

New England College  
Henniker, N. H. 03242

Teaches Folklore

FOREIGN LANGUAGES

Thomas F. Sousa, Consultant  
Adult Basic Education

N. H. Dept. of Education  
64 North Main Street  
Concord, N. H. 03301

Foreign Languages, English as  
a Second Language

Tel.: 271-2617

## GROUPING

Thomas McAdam, Principal  
Oyster River Elementary School  
Durham, N. H. 03824  
Tel.: 868-2155

Project Center - Multi-age  
Classrooms Ages 8, 9, 10  
Activity Classrooms

## HEALTH

Harriet B. Forkey, Consultant  
Health & Physical Education

N. H. Dept. of Education  
64 North Main Street  
Concord, N. H. 03301

Tel.: 271-2309

Health Education

Mary O. Hall, Consultant  
Health Services

N. H. Dept. of Education  
64 North Main Street  
Concord, N. H. 03301

Tel.: 271-2129

School Health Services and  
School Nursing: Resources  
Available (reading lists,  
films, filmstrips, etc.)

George Reid, Principal

Middle School Annex  
Somersworth, N. H. 03878

Tel.: 692-4051

Health Program - Intermediate  
Grades

## HOME ECONOMICS EDUCATION

Marceline A. Boomer, Consultant  
Home Economics Education

N. H. Dept. of Education  
105 Loudon Road  
Concord, N. H. 03301

Tel.: 271-2160

Home Economics Education

## HOME ECONOMICS EDUCATION (cont'd)

Lila C. Murphy, Director  
Research Coordinating Development

Home Economics Education

N. H. Dept. of Education  
105 Loudon Road  
Concord, N. H. 03301

Tel.: 271-3276

## INDUSTRIAL ARTS EDUCATION

Carl H. Hanover, Consultant  
Industrial Arts Education

Industrial Arts Education

N. H. Dept. of Education  
105 Loudon Road  
Concord, N. H. 03301

Tel.: 271-3587

## INFORMATION SYSTEMS

Robert P. Stocking, Consultant  
Exemplary & Developmental Programs

Management Information Systems:  
Analysis and Design

N. H. Dept. of Education  
105 Loudon Road  
Concord, N. H. 03301

Tel.: 271-2197

Sherman V. Wheeler, Consultant  
Educational Information

Information, Scheduling, Record  
Systems

N. H. Dept. of Education  
410 State House Annex  
Concord, N. H. 03301

Tel.: 271-2778

## INTERPERSONAL RELATIONS

John Ahern

A Sense of Humor - A Sense of  
Balance  
Classroom Interaction

Rt. 1, Box 218  
Weare, N. H. 03281

Tel.: 529-2394

INTERPERSONAL RELATIONS (cont'd)

Michael J. Brophy, Senior Consultant  
Planning & Evaluation Unit

Group Training

N. H. Dept. of Education  
410 State House Annex  
Concord, N. H. 03301

Tel.: 271-2657

David Draves

Dept. of Education  
Morrill Hall  
University of New Hampshire  
Durham, N. H. 03824

Tel.: 862-1730

Flanders Interaction Analysis:  
Introduction to and initial  
training in the use of the Flanders  
system. Discussion of potential  
uses and misuses of the system.  
Explorations of variations of the  
system.

Ross Lurgio

Manchester School Dept.  
Manchester, N. H. 03103

Tel.: 688-2850

McCurdy Road  
New Boston, N. H. 03070

Tel.: 487-2458

Interpersonal Relations

Thomas F. Sousa, Consultant  
Adult Basic Education

N. H. Dept. of Education  
64 North Main Street  
Concord, N. H. 03301

Tel.: 271-2617

Interaction Analysis: Teacher  
Training

Leon Worthley, Assistant Director  
Title III ESEA

N. H. Dept. of Education  
64 North Main Street  
Concord, N. H. 03301

Tel.: 271-3481

Group Process

See Also: COMMUNICATION SKILLS



LANGUAGE ARTS

Margaret Ackerman

Dept. of Education  
Morrill Hall  
University of New Hampshire  
Durham, N. H. 03824

Tel.: 862-2310

F. Joanne Baker, Consultant  
English & Reading

N. H. Dept. of Education  
64 North Main Street  
Concord, N. H. 03301

Tel.: 271-3747

John Carney

Dept. of Education  
Morrill Hall  
University of New Hampshire  
Durham, N. H. 03824

Tel.: 862-2310

John Lowy, Principal

Mast Way School  
Durham, N. H. 03824

Tel.: 659-3001

Mary Lyster, Reading Consultant

Somersworth School Dept.  
Somersworth, N. H. 03878

Tel.: 692-2169

Language Learning: Workshop  
presenting "Language Learning  
Can Be Fun" with active partici-  
pation on the part of those in  
attendance.

English: (7-12) methods,  
curriculum, etc.

Teaching Reading in the Content  
Areas: A workshop describing an  
instructional format in which  
aspects of the Reading Process  
and the Concepts embodied in the  
subject matter (Eng, SS, Sci, Math)  
of the Secondary School curriculum  
are integrated in such a manner  
that reading skills inherent in the  
material and essential to its under-  
standing are taught functionally  
through the content with the purpose  
of promoting the acquisition of the  
concepts.

Math Skill Continuums - Reading  
Skill Continuums  
Individualized Learning Programs  
Workshop topic.

Reading An Accountable Program:  
A Diagnostic Approach K-12

LANGUAGE ARTS (cont'd)

Cynthia Mowles, Consultant  
Early Childhood Education

Early Reading/Language Development

N. H. Dept. of Education  
64 North Main Street  
Concord, N. H. 03301

Tel.: 271-2796

Horace L. Roberts, Consultant  
Instructional Media

English

N. H. Dept. of Education  
64 North Main Street  
Concord, N. H. 03301

Tel.: 271-3578

Richard Tappan

Film Making as a Part of the  
Curriculum - Language Arts

Oyster River Middle School  
Durham, N. H. 03824

Tel.: 868-2820

Verna Whipple

Explanation and Demonstration  
of Spaldings Unified Phonics  
Method

Hillsboro-Deering  
Elementary School  
Hillsboro, N. H. 03244

Tel.: 464-5904

West Main Street  
Hillsboro, N. H. 03244

Tel.: 464-3392

Barbara Willis

Readiness Room Operation

(formerly of)  
Henniker Elementary School

Williams Road  
Hillsboro, N. H. 03244

Tel.: 464-5974

## LIBRARY SERVICES

Reginald A. Comeau, Consultant  
School Library Services

School Library Services

N. H. Dept. of Education  
64 North Main Street  
Concord, N. H. 03301

Tel.: 271-2401

### LOW-INCOME, DISADVANTAGED, NONSUCCESSFUL STUDENT

Don Harmon, Director  
Project Upward Bound

Morrill Hall  
University of New Hampshire  
Durham, N. H. 03824

Tel.: 862-2761

Plight of the Low-Income Student:  
One half hour video tape on the  
Upward Bound Project. The focus  
would be to acquaint teachers with  
some problems which low-income  
students sometimes encounter,  
with the purpose of the tape being  
to sensitize the teacher to the  
plight of the low-income student.

E. G. DeForrest, Consultant  
Title I ESEA

N. H. Dept. of Education  
64 North Main Street  
Concord, N. H. 03301

Tel.: 271-2717

Education of the Disadvantaged:  
Title I Programs

Mary Stuart Gile, Consultant  
Title I ESEA

N. H. Dept. of Education  
64 North Main Street  
Concord, N. H. 03301

Tel.: 271-2717

Education for the Disadvantaged

Richard B. Hodges, Director  
Title I ESEA

N. H. Dept. of Education  
64 North Main Street  
Concord, N. H. 03301

Tel.: 271-2717

Programs for Disadvantaged Children

LOW-INCOME, DISADVANTAGED, NONSUCCESSFUL STUDENT (cont'd)

John E. Bean, Jr., Consultant  
Disadvantaged & Handicapped

Techniques for Dealing with  
Non-Successful Students

N. H. Dept. of Education  
105 Loudon Road  
Concord, N. H. 03301

Tel.: 271-3451

MATHEMATICS

Barbara Hill

Math: Computer Implementation  
in a High School Curriculum

Oyster River High School  
Durham, N. H. 03824

Tel.: 868-2375

James Hamilton

Solution of Word Problems  
Historical Role of Mathematics  
Fundamental Principles of Computers

Hillsboro-Deering Elementary  
School  
Hillsboro, N. H. 03244

Tel.: 464-5904

P. O. Box 699  
Hillsboro, N. H. 03244

Tel.: 464-3540

John Lowy, Principal

Math Skill Continuums  
Reading Skill Continuums  
Individualized Learning

Mast Way School  
Durham, N. H. 03824

Tel.: 659-3001

Fernand J. Prevost, Consultant  
Mathematics

Mathematics Education:  
Curriculum Planning, Teaching  
Techniques, Metric Education

N. H. Dept. of Education  
64 North Main Street  
Concord, N. H. 03301

Tel.: 271-3607

## MEDIA EQUIPMENT

Carveth T. Paul

Henniker High School  
Henniker, N. H. 03242

Tel.: 428-3476

Colby Hill Road  
Henniker, N. H. 03242

Tel.: 428-7680

Use of Media Equipment and Software  
Production

Horace L. Roberts, Consultant  
Instructional Media

N. H. Dept. of Education  
64 North Main Street  
Concord, N. H. 03301

Tel.: 271-3578

Instructional Media:  
Development of Media & Resource  
Centers, Inservice Training, etc.

## MODELS OF TEACHER PREPARATION

Thomas F. Sousa, Consultant  
Adult Basic Education

N. H. Dept. of Education  
64 North Main Street  
Concord, N. H. 03301

Tel.: 271-2617

Teacher Training and Supervision:  
Micro-teaching and Interaction  
Analysis

Richard L. Barker, Director  
Professional Development

N. H. Dept. of Education  
105 Loudon Road  
Concord, N. H. 03301

Tel.: 271-2723

Teacher Education

## MONTESSORI EDUCATION

Douglas Gravel

Caedmon School  
416 East 80th Street  
New York, N. H. 10021

Tel.: 212-879-2297

Montessori "beautiful"  
Junior Course

MOTIVATION

Bruce Simons

Motivational Attitudes  
Development

Contoocook, N. H. 03229

Tel.: 746-7666

NEEDS ASSESSMENT

Richard B. Hodges, Director  
Title I ESEA

Needs Assessment

N. H. Dept. of Education  
64 North Main Street  
Concord, N. H. 03301

Tel.: 271-2717

Robert Schweiker

Needs Assessment

12 Chapel Street  
Concord, N. H. 03301

Leon Worthley, Assistant Director  
Title III ESEA

Needs Assessment

N. H. Dept. of Education  
64 North Main Street  
Concord, N. H. 03301

Tel.: 271-3481

Douglas Brown, Assistant Director  
Teacher Education & Professional  
Standards

Needs Assessment

N. H. Dept. of Education  
410 State House Annex  
Concord, N. H. 03301

Tel.: 271-2407

NEWS MEDIA

W. Pierce Burgess, Program Information  
Officer

Media Contacts, Information,  
Public Relations, Publicity

N. H. Dept. of Education  
410 State House Annex  
Concord, N. H. 03301

Tel.: 271-2509

## NURSING EDUCATION

Marguerite Hastings, Director  
Nurse Education & Registration

Nursing: Education and Standards,  
Licensing (R.N. & L.P.N.)

N. H. Dept. of Education  
105 Loudon Road  
Concord, N. H. 03301

Tel.: 271-2323

## OBJECTIVES, INSTRUCTIONAL

Jerry Rittersdorf, Principal

Somersworth Middle School  
Somersworth, N. H. 03878

Tel.: 692-2126

Development and Implementation  
of Middle School Curriculum  
Individualized Program  
Instructional Objectives All  
Subject Areas  
Model Curriculum Support Unit

## ORGANIZATION DEVELOPMENT

Michael J. Brophy, Senior Consultant  
Planning & Evaluation Unit

N. H. Dept. of Education  
410 State House Annex  
Concord, N. H. 03301

Tel.: 271-2657

Organizational Development  
Applied Systems Theory

Paul R. Fillion, Chief  
Division of Administration

N. H. Dept. of Education  
410 State House Annex  
Concord, N. H. 03301

Tel.: 271-3453

School Organization

Roland Goddu, Director  
NEPTE

Pettee Brook Offices  
Durham, N. H. 03824

Tel.: 868-5566

Organizational Development



## PARAPROFESSIONALS

Barbara Willis

Use of Aides

(formerly of)  
Henniker Elementary School

Williams Road  
Hillsboro, N. H. 03244

Tel.: 464-5974

## PARENTS

Carol Findell  
(Parent)

Parent Involvement in Schools

Supervisory Union 56  
Somersworth, N. H. 03878

Tel.: 692-2169

Robert J. Ross, Principal

Reporting to Parents

Broken Ground School  
Portsmouth Street  
Concord, N. H. 03301

Tel.: 224-4019

## PEER INSTRUCTION

Peter Ordway, Peer Instructor  
Program Director

Implementation of Peer Instruction Program

Somersworth Middle School  
Somersworth, N. H. 03878

Tel.: 692-2126

Jerry Rittersdorf, Principal

Implementation of Peer Instruction Program

Somersworth Middle School  
Somersworth, N. H. 03878

Tel.: 692-2126

## PHONICS

Verna Whipple

Hillsboro-Deering  
Elementary School  
Hillsboro, N. H. 03244

Tel.: 464-5904

West Main Street  
Hillsboro, N. H. 03244

Tel.: 464-3392

Explanation and Demonstration of  
Spauldings Unified Phonics  
Method

## PHOTOGRAPHY

Horace L. Roberts, Consultant  
Instructional Media

N. H. Dept. of Education  
64 North Main Street  
Concord, N. H. 03301

Tel.: 271-3578

Photography

## PHYSICAL EDUCATION

Harriet B. Forkey, Consultant  
Health & Physical Education

N. H. Dept. of Education  
64 North Main Street  
Concord, N. H. 03301

Tel.: 271-2309

Physical Education:  
Movement Education  
Teaching Methods; Sex Roles  
Stereotyping

Douglas Brown, Assistant Director  
Teacher Education & Professional  
Standards

N. H. Dept. of Education  
410 State House Annex  
Concord, N. H. 03301

Tel.: 271-2407

Physical Education

## POST-SECONDARY EDUCATION

Charles H. Green, Chief  
Post-Secondary Division

N. H. Dept. of Education  
163 Loudon Road  
Concord, N. H. 03301

Tel.: 271-2722

Post-Secondary Vocational  
Technical Education

Donald Sutherland, Consultant  
Continuing Education &  
Special Services

N. H. Dept. of Education  
163 Loudon Road  
Concord, N. H. 03301

Tel.: 271-2727

Continuing Education  
Student Placement (college  
level)

## PUBLIC RELATIONS

W. Pierce Burgess, Program  
Information Officer

N. H. Dept. of Education  
410 State House Annex  
Concord, N. H. 03301

Tel.: 271-2509

Public Relations: Media  
Contacts, Publicity,  
Speechwriting, etc.

## READINESS

Barbara Willis

(formerly of)  
Henniker Elementary School

Williams Road  
Hillsboro, N. H. 03244

Tel.: 464-5974

Readiness Room Operation

READING

John Carney

Dept. of Education  
Morrill Hall  
University of New Hampshire  
Durham, N. H. 03824

Tel.: 862-2310

John Lowy, Principal

Mast Way School  
Durham, N. H. 03824

Tel.: 659-3001

Mary Lyster, Reading Consultant

Somersworth School Dept.  
Somersworth, N. H. 03878

Tel.: 692-2169

Linda Pratt

Center for the Study of Human  
Potential (ANISA)  
University of Massachusetts  
Amherst, Mass. 01002

Tel.: 413-545-0875

Rolling Green 135  
Amherst, Mass. 01002

Tel.: 413-256-8434

Teaching Reading in the Content  
Areas: A workshop describing an  
instructional format in which  
aspects of the reading process  
and the concepts embodied in the  
subject matter (Eng, SS, Sci,  
Math) of the secondary school  
curriculum are integrated in  
such a manner that reading  
skills inherent in the material  
and essential to its understanding  
are taught functionally through  
the content with the purpose  
of promoting the acquisition of  
the concepts.

Math Skill Continuums  
Reading Skill Continuums  
Individualized Learning Programs

Reading An Accountable Program  
A Diagnostic Approach K-12

Reading

## RESEARCH

Robert Schweiker

12 Chapel Street  
Concord, N. H. 03301

Research: Interpreting and  
Applying Research

Sherman V. Wheeler, Consultant  
Educational Information

N. H. Dept. of Education  
410 State House Annex  
Concord, N. H. 03301

Tel.: 271-2778

Institutional Research

## RESOURCE CENTERS

Horace L. Roberts, Consultant  
Instructional Media

N. H. Dept. of Education  
64 North Main Street  
Concord, N. H. 03301

Tel.: 271-3578

Development of Media and  
Resource Centers

Marcia Taft

Resource Center Coordinator  
Mast Way School  
Durham, N. H. 03824

Tel.: 659-3001

Creating a Resource Center  
in an Elementary School

## SCHOOL BOARDS

Barbara Houston, Chairman

Union 56 School Board  
Somersworth, N. H. 03878

Tel.: 692-2169

Creating School Board Policies

(Dr.) Harold Pierson

Box 526  
New Hampton, N. H. 03256

Tel.: 744-3222

NEPTE Board Member  
Professional Standards Board  
Member

SCIENCE

Michael Andrew

Dept. of Education  
Morrill Hall  
University of New Hampshire  
Durham, N. H. 03824

Tel.: 862-2310

Michael Diamonti

Dept. of Education  
Morrill Hall  
University of New Hampshire  
Durham, N. H. 03824

Tel.: 862-2310

Robert H. Fay

Foster Road  
Milford, N. H. 03055

Eleanor Milliken, Science  
Coordinator K-12

Oyster River School District  
Durham, N. H. 03824

Tel.: 868-2375

George Reid, Principal

Middle School Annex  
Somersworth, N. H. 03878

Tel.: 692-4051

Activity Approach to Elementary  
Science: Workshop presenting  
demonstrations of activity  
centered science approach for  
elementary school teachers.

Hidden Curriculum: Two specific  
subject areas (Social Studies  
and Science) will be investigated  
to explain how the material in  
these subjects and the way it is  
taught can lead to political  
quiescence and the acceptance  
by students of a perspective on  
social and intellectual conflict  
which acts to maintain the existing  
distribution of power in a society.

Science: Chemistry, Physics  
(electro-optics), Science  
Projects & Fairs

Science: Organizing Resources  
for Teachers and Students &  
How to Get Them Post Haste

Implementation ESS Science Program

## SOCIAL STUDIES

Michael Diamonti

Dept. of Education  
Morrill Hall  
University of New Hampshire  
Durham, N. H. 03824

Tel.: 862-2310

Hidden Curriculum: Two specific subject areas (Social Studies and Science) will be investigated to explain how the material in these subjects and the way it is taught can lead to political quiescence and the acceptance by students of a perspective on social and intellectual conflict which acts to maintain the existing distribution of power in a society.

David Draves

Dept. of Education  
Morrill Hall  
University of New Hampshire  
Durham, N. H. 03824

Tel.: 862-1730

Characteristics of the New Social Studies: Demonstrate and explain characteristics which separate the new from the traditional social studies instructional materials and strategies. Explore the import of the innovations upon teaching, resources, and curriculum (either or both elem/sec), individual workshops on ACSP, HSGP, SRSS and social science concepts behind them.

John Lowy, Principal

Mast Way School  
Durham, N. H. 03824

Tel.: 659-3001

Taba Approach to Social Studies Inquiry

Mel Sneed

Hillsboro-Deering  
Elementary School  
Hillsboro, N. H. 03244

Tel.: 464-5904

Creative Expression through Social Studies and Use of National Geographic School Bulletin

Terrace Road  
Franklin, N. H. 03235

Tel.: 934-3685



SOCIAL WORK

Ross Lurgio

Social Work

Manchester School Dept.  
Manchester, N. H. 03103

Tel.: 688-2850

McCurdy Road  
New Boston, N. H. 03070

Tel.: 487-2458

SPECIAL EDUCATION

Jules Cote, Consultant  
Special Education

Visually Impaired

N. H. Dept. of Education  
105 Loudon Road  
Concord, N. H. 03301

Tel.: 271-3741

Alice Train, Hearing Therapist

Integration of Hearing-Impaired  
Child into Regular Classes

Rundlett Junior High School  
Conant Park Drive  
Concord, N. H. 03301

Tel.: 225-6695

Fred Krieg

Learning Disabilities

Dept. of Education  
Morrill Hall  
University of New Hampshire  
Durham, N. H. 03824

Tel.: 862-1730

TEAM TEACHING

James Dodge, Principal

Teaming

Oyster River Middle School  
Durham, N. H. 03824

Tel.: 868-2820

## TRADES/INDUSTRY EDUCATION

Walter E. Miner, Consultant  
Trade & Industry

Curriculum Development in Trades

N. H. Dept. of Education  
105 Loudon Road  
Concord, N. H. 03301

Tel.: 271-3587

## VOCATIONAL COUNSELING

Josephine Hayslip

Vocational and Career Guidance,  
Counseling, Placement

Vocational Guidance Services  
N. H. Dept. of Education  
64 North Main Street  
Concord, N. H. 03301

Tel.: 271-2664

## VOCATIONAL-TECHNICAL EDUCATION

Rafael Adames, Consultant  
Cooperative & Distributive Education

Cooperative & Distributive  
Education

N. H. Dept. of Education  
105 Loudon Road  
Concord, N. H. 03301

Tel.: 271-2479

Richard L. Barker, Director  
Professional Development

Vocational Education

N. H. Dept. of Education  
105 Loudon Road  
Concord, N. H. 03301

Tel.: 271-2723

Marceline A. Boomer, Consultant  
Home Economics Education

Home Economics Education

N. H. Dept. of Education  
105 Loudon Road  
Concord, N. H. 03301

Tel.: 271-2160

VOCATIONAL-TECHNICAL EDUCATION (cont'd)

Charles H. Green, Chief  
Post-Secondary Division

Post-Secondary Vocational  
Technical Education

N. H. Dept. of Education  
163 Loudon Road  
Concord, N. H. 03301

Tel.: 271-2722

Carl H. Hanover, Consultant  
Industrial Arts Education

Industrial Arts Education

N. H. Dept. of Education  
105 Loudon Road  
Concord, N. H. 03301

Tel.: 271-3587

Josephine Hayslip

Career and Vocational Guidance  
Counseling, Placement

Vocational Guidance Services  
N. H. Dept. of Education  
64 North Main Street  
Concord, N. H. 03301

Tel.: 271-2664

Walter E. Miner, Consultant  
Trade & Industry

Trade & Industry: Curriculum  
Development in Trades

N. H. Dept. of Education  
105 Loudon Road  
Concord, N. H. 03301

Tel.: 271-3587

Lila C. Murphy

Vocational Education  
Home Economics Education

N. H. Dept. of Education  
105 Loudon Road  
Concord, N. H. 03301

Tel.: 271-3276

William N. Rowland, Director  
Consultant Services

Vocational Education:  
Secondary

N. H. Dept. of Education  
105 Loudon Road  
Concord, N. H. 03301

Tel.: 271-3277

VOCATIONAL-TECHNICAL EDUCATION (cont'd)

Norm Yeaton, Vocational Education  
Director

Somersworth High School  
Somersworth, N. H. 03878

Tel.: 692-2431

Work-Study Program - Secondary  
Schools  
Building Trades Programs

VOLUNTEERS

Deborah Carpenter, Director  
School Volunteer Program

Dubuque Street  
Manchester, N. H. 03102

Tel.: 622-5711

School Volunteer Program

WORK-STUDY PROGRAM

Norm Yeaton, Vocational Education  
Director

Somersworth High School  
Somersworth, N. H. 03878

Tel.: 692-2431

Work-Study Program - Secondary  
Schools

WRITING OF:

John B. Nay, Director  
Title III ESEA

N. H. Dept. of Education  
64 North Main Street  
Concord, N. H. 03301

Tel.: 271-3481

Proposal Writing and Development

Richard E. Mandeville, Consultant  
Project Analysis & Development

N. H. Dept. of Education  
163 Loudon Road  
Concord, N. H. 03301

Tel.: 271-2727

Proposal Writing

W. Pierce Burgess, Program Information  
Officer

N. H. Dept. of Education  
410 State House Annex  
Concord, N. H. 03301

Tel.: 271-2509

Speechwriting

# NEW HAMPSHIRE EDUCATIONAL RESOURCE CATALOG



OFFICE OF TEACHER EDUCATION AND PROFESSIONAL STANDARDS - PART III: EXTERNAL RESOURCES  
DEPARTMENT OF EDUCATION  
CONCORD, NEW HAMPSHIRE  
FEBRUARY, 1975

94

GOVERNOR OF NEW HAMPSHIRE

Meldrim Thomson, Jr.

THE EXECUTIVE COUNCIL

District No. 1	Lyle E. Hersom, Groveton
District No. 2	James H. Hayes, Concord
District No. 3	Leon G. Yeaton, Dover
District No. 4	Louis D'Allesandro, Manchester
District No. 5	Bernard A. Streeter, Jr., Nashua

Publication of this document is in part supported  
by funds from New England Interstate 505.

NEW HAMPSHIRE  
STATE BOARD OF EDUCATION  
1975-76

APPOINTMENT		TERM EXPIRES
1973	William P. Bittenbender, Deering Chairman	1978
1970	Donald E. Borchers, Berlin	1976
1974	Mrs. Cathrine R. Caouette, Contobcook	1979
1965	Gerard F. Cullerot, D.D.S., Manchester	1977
1971	Daniel E. Gosselin, Enfield	1976
1969	Edward C. Sweeney, Jr., Keene	1979
1975	Ivah A. Hackler, Auburn	1980

COMMISSIONER OF EDUCATION

Newell J. Paire

DEPUTY COMMISSIONER

Robert L. Brunelle

CHIEF, DIVISION OF ADMINISTRATION

Paul R. Fillion



NEW HAMPSHIRE EDUCATIONAL RESOURCE CATALOG

PART III

EXTERNAL RESOURCES

NEW HAMPSHIRE STATE DEPARTMENT OF EDUCATION

OFFICE OF TEACHER EDUCATION AND PROFESSIONAL STANDARDS

Harvey H. Harkness, Jr., Director  
Douglas H. Brown, Assistant Director  
John L. Davy, Consultant  
Carolyn L. Sweetser, NEPTE Field Agent

Contributor:

Dorothy M. Hart

NEW HAMPSHIRE EDUCATIONAL RESOURCE CATALOG, PART III: EXTERNAL RESOURCES

TABLE OF CONTENTS

ARTS RESOURCES . . . . .	1
Community Arts Councils . . . . .	1-2
Community Arts Centers . . . . .	3
Community Orchestras . . . . .	4
Community Choral Organizations . . . . .	5
Professional Music Organizations . . . . .	6
College Music Organizations . . . . .	7-8
Opera Organizations . . . . .	9
Dance Organizations . . . . .	9-10
Community Theatre Groups . . . . .	11-12
Community Theatre For Children . . . . .	12
Professional Theatre - Winter . . . . .	13
Children's Theatre - Winter . . . . .	13
College Theatre Groups . . . . .	13-14
Poetry . . . . .	14-15
Art Galleries . . . . .	15-16
College Arts Centers . . . . .	16
Touring Arts . . . . .	17
Film Resources . . . . .	18
Film Societies . . . . .	18-19
New Hampshire League of Craftsmen . . . . .	19
Arts Information . . . . .	20
New England State Arts Councils . . . . .	20
BOAT CRUISES . . . . .	21
EDUCATIONAL RESOURCES . . . . .	22-24
HISTORIC RESOURCES . . . . .	25-33
ORGANIZATIONAL & STATE AGENCY RESOURCES . . . . .	34-53
PLACES OF INTEREST . . . . .	54-56
SCIENCE CENTERS . . . . .	57

ARTS RESOURCES

NEW HAMPSHIRE COMMISSION ON THE ARTS

Phenix Hall, 40 North Main Street  
Concord, N. H. 03301  
271-2789  
John G. Coe, Executive Director  
Susan Taylor, Arts Information Coordinator  
Deborah Cowan, Dance Coordinator  
Marie Harris, Coordinator - Poetry-in-the-Schools

NEW HAMPSHIRE LEAGUE OF CRAFTSMEN

205 North Main Street  
Concord, N. H. 03301  
224-3375  
Merle Walker, Executive Director  
Erling Heistad, Educational Consultant

NEW HAMPSHIRE DEPARTMENT OF EDUCATION

64 North Main Street  
Concord, N. H. 03301  
271-2402  
Dr. Alice Baumgarner, Consultant Arts Education

ASSOCIATED COUNCILS ON THE ARTS

1564 Broadway, Room 820  
New York City, New York 10036  
212-586-3731  
John Hightower, Director  
Julia Foulkes-Roberts, Coordinator of Seminars

NATIONAL ENDOWMENT FOR THE ARTS

806 15th St., NW  
Washington, D. C. 20506  
202-382-6208

COMMUNITY ARTS COUNCILS

ANDOVER CREATIVE ARTS ASSOCIATION

Winslow Eaves, President  
West Andover  
Potter Place, N. H. 03265  
735-5371  
Annaleida Van't Hoff, Secretary  
RFD 1  
Andover, N. H. 03216  
735-5167

BERLIN-GORHAM HUMANITIES ARTS COUNCIL,  
INC.

Martha Collins  
Sheila McQuillen Co-Chairman  
P. O. Box 85  
Gorham, N. H. 03581  
466-2469

CLAREMONT LIBRARY ARTS COUNCIL

Joseph Green  
Claremont, N. H. 03743  
542-4393

AREA ARTS COUNCIL OF GREATER CONCORD

Guy Wilson, President Pro Tem  
Esme Cahill, Secretary  
Kate Torres, Director  
Phenix Hall, 40 North Main St.  
Concord, N. H. 03301  
225-6911

TWIN RIVERS COUNCIL ON THE ARTS  
(FRANKLIN)

Lewis P. Richard, Chairman  
Library Building  
310 Central Street  
Franklin, N. H. 03235  
934-2911

HENNIKER YOUTH SERVICES

Kenneth Gilbride &  
Michael Greenblatt  
P. O. Box 397  
Henniker, N. H. 03242  
428-7241

CHESHIRE ARTS COUNCIL (KEENE)

Ruth Ewing, President  
Surry Road  
Keene, N. H. 03431  
352-5159

FRIENDS OF THE LEBANON OPERA HOUSE

John F. O'Connell  
Meriden Road  
Lebanon, N. H. 03766  
448-2861

LINCOLN ARTS COUNCIL

Rachel Adams, President  
Pollard Road  
Lincoln, N. H. 03251  
245-2289

FRIENDS OF HOPKINS CENTER (HANOVER)

Marilyn Crichlow, Administrative  
Sec., Hopkins Center  
Hanover, N. H. 03755  
646-2422

ST. ANSELM'S COMMISSION ON THE ARTS  
(MANCHESTER)

Fr. Eugene Rice, Executive Director  
St. Anselm's College  
Manchester, N. H. 03102  
669-1030

NEWPORT LIBRARY ARTS COUNCIL

Marie Bugbee  
Dewalt Avenue  
Newport, N. H. 03773  
863-3430

MONADNOCK AREA ARTS COUNCIL (PETERBORO)

Arthur Eldredge, President  
1 Grove Street  
Peterborough, N. H. 03458  
924-3343 or 3573

COMMUNITY ARTS COUNCILS (Cont'd)

ARTS COUNCIL OF TAMWORTH

Mrs. Eleanor Olton, President  
Tamworth  
N. H. 03886  
323-7967

GOVERNOR WENTWORTH ARTS COUNCIL (WOLFEBORO)

Arthur Glidden, Chairman  
Box 213  
Wolfeboro Falls, N. H. 03896  
569-4117 home, 569-3456 days

COMMUNITY ARTS CENTERS

NEW HAMPSHIRE PERFORMING ARTS CENTER  
PALACE THEATRE

Jon P. Ogden, Managing Director  
Hanover Street  
Manchester, N. H. 03101  
669-8021

MANCHESTER INSTITUTE OF ARTS AND SCIENCES

James Boatner, Executive Director  
148 Concord Street  
Manchester, N. H. 03101  
623-0313

PHENIX HALL ARTS CENTER

Kate Torres, Director  
Concord Arts Council  
40 North Main Street  
Concord, N. H. 03301  
225-6911

ARTS AND SCIENCE CENTER, NASHUA

Director  
14 Court Street  
Nashua, N. H. 03060  
883-1506

SHARON ARTS CENTER

John Dolan, Director  
RD 2  
Peterborough, N. H. 03458  
924-3582

THE COMMUNITY CENTER

Ken Gilbride, Director  
Henniker Youth Services  
P.O. Box 397  
Henniker, N. H. 03242  
428-7241

COMMUNITY ORCHESTRAS

MANCHESTER SYMPHONETTE

Leo Battista, Director  
Palace Theatre  
Hanover Street,  
Manchester, N. H. 03101  
669-8021

N.H. PHILHARMONIC ORCHESTRA (MANCHESTER)

Dr. H. N. Sander, President  
High Street  
Candia, N. H. 03034 (483-2371)  
Roland Tapply, Artistic Director

NASHUA SYMPHONY ORCHESTRA.

R. Robbins, President  
11 Hazelwood Road  
Hudson, N. H. 03051  
883-8001 or 882-8626  
Willis Tappenhagen, Artistic Director

DARTMOUTH SYMPHONY ORCHESTRA (HANOVER)

Jeanne Sachs, President  
Wyeth Road  
Hanover, N. H. 03755  
643-4900  
Alan Grishman, Guest Conductor

NORTH COUNTRY ORCHESTRA

Richard Bellak, Artistic Director  
c/o Franconia College  
Franconia, N. H. 03580  
823-8059

UNH SYMPHONY ORCHESTRA (DURHAM)

Alan Grishman, Guest Conductor  
Paul Arts Center  
University of N. H.  
Durham, N. H. 03824

COLLEGE-COMMUNITY ORCHESTRA SOCIETY (KEENE)

Donald W. Morris, President  
Keene State College  
Keene, N. H. 03431  
352-1909

COMMUNITY CHORAL ORGANIZATIONS

BERLIN-GORHAM COMMUNITY CHORUS

Margaret Ruggles, Director  
7 Jordan Avenue  
Berlin, N. H. 03570  
752-4248

CONCORD CHORALE

Phylliss Isaacson, Conductor  
Jeremy Cooper, President  
Box 160  
Concord, N. H. 03301  
224-5450 or 736-9311

DERRY CHORAL SOCIETY

Mari Douglas, Director  
172 Prospect Street  
Manchester, N. H. 03104  
668-0904

ROCKINGHAM CHORAL SOCIETY (EXETER)

Peter Bierel, President  
P. O. Box 122  
Exeter, N. H. 03833

JEFFERSON CHORUS

Nancy Windsor, Conductor  
RFD 1, Box 83  
Jefferson, N. H. 03583  
586-4519

MANCHESTER CHORAL SOCIETY

Arthur Mirabile, Artistic Director  
Memorial High School  
160 Lexington Avenue  
Manchester, N. H. 03104  
623-5481

NASHUA CHORAL SOCIETY

James Johnston, Director  
Box 527  
Hollis, N. H. 03049

MONADNOCK CHORUS (PETERBOROUGH)

Ruth Wight, President  
Box 105  
Dublin, N. H. 03444  
563-6581

PEMIGEWASSET CHORAL SOCIETY (PLYMOUTH)

Katherine Buck, Director  
RFD 1  
Rumney, N. H. 03266  
744-3102  
Earl Norwood, Musical Director

NORTH COUNTRY CHORUS (WELLS RIVER, VT)

Mary Rowe, Director  
Wells River  
Vermont  
802-757-2325

THE VILLAGE ARTS (WOLFEBORO)

Theodore Hewitt, Music Director  
Kingswood Regional High School  
Wolfboro, N. H. 03894



PROFESSIONAL MUSIC ORGANIZATIONS

MONADNOCK MUSIC

Sally Skinner, Business Manager  
RFD  
Marlborough, N. H. 03455  
827-3249  
James Bolle, Artistic Director

\*DUDLEY LAUFMAN & THE CANTERBURY  
COUNTRY DANCE ORCHESTRA

Dudley Laufman, Artistic Director  
Canterbury  
N. H. 03224  
783-9879

STRAWBERRY BANKE CHAMBER MUSIC FESTIVAL

Frank Dodge, Artistic Director  
Box 300  
Portsmouth, N. H. 03801  
431-7501

\*\*CREATIVE ARTS PERFORMERS

Betty Stewart, Artistic Director  
Box 234  
Amherst, N. H. 03031  
673-3564

FRANCONIA SUMMER MUSIC ORCHESTRA

Richard Bellak, Artistic Director  
White Mts. Art and Music Festival  
Box 145  
Jefferson, N. H. 03583

N.H. CHAPTER, AMERICAN GUILD OF  
ORGANISTS

Romette Headley, Director  
37 Brook Street  
Manchester, N. H. 03100  
669-3441

\*NORTH COUNTRY CHAMBER PLAYERS

Mimi Bravar  
Joppa Hill Road  
Bedford, N. H. 03102  
472-3042

EXPERIMENTAL ARTS IN EDUCATIONS

Straffords in the Field  
Chocorua  
N. H. 03817  
winter:  
Petr Kotik  
P.O. Box 342  
Albany, N. Y. 12201

NEW HAMPSHIRE MUSIC FESTIVAL, INC.

Box 147  
Center Harbor, N. H. 03226  
253-4331  
Thomas Nee, Artistic Director

\*CENTER FOR CHAMBER MUSIC AT APPLE HILL  
FARM

Eugene Rosov, Artistic Director  
Apple Hill Farm  
Nelson, N. H. 03445  
847-9706

\*NEW ARTS ENSEMBLE

Joseph Packles, Artistic Director  
Box 234  
Laconia, N. H. 03246  
524-9082

\* Year Round  
\*\* Winter Only



COLLEGE MUSIC ORGANIZATIONS

Colby College, New Hampshire  
New London, N. H. 03257

COLBY CONCERT CHOIR - Lewis Gordon  
COLBY CHAMBER SINGERS - Lewis Gordon  
Nancy Draper, Chairman  
Department of Music

Dartmouth College  
Hopkins Center  
Hanover, N. H. 03755

BREGMAN ELECTRONIC MUSIC STUDIO

Jon Appleton  
646-2139

CONCERT BAND - Donald Wendlendt  
646-2742

MARCHING BAND - Donald Wendlendt

WIND ENSEMBLE - " "

DARTMOUTH COLLEGIUM MUSICUM

Steven Ledbetter  
646-3310

HANDEL SOCIETY

Steven Ledbetter

DARTMOUTH COLLEGE GLEE CLUBS

Paul Zeller  
646-2743

DARTMOUTH AIRES, DARTMOUTH  
DISTRACTIONS

Paul Zeller

NEW MUSIC ENSEMBLE

Steve Radecke  
646-2520

WEDS. NOON & SAT. AFT. CONCERTS

Carol Eliot  
646-2520

Paul Zeller, Chairman of Music Dept.  
Hopkins Center

Franconia College  
Franconia, N.H. 03580

FRANCONIA CHORUS

Leon Botstein

FRANCONIA ENSEMBLE

Don Anderson

FRANCONIA CONCERT GROUP

Richard Bellak

Richard Bellak, Chairman, Dept.  
of Music

Franklin Pierce College  
Rindge, N. H. 03461

COLLEGE CHAMBER SINGERS

David Brandes

CHORAL SOCIETY

David Brandes

BRASS ENSEMBLE

David Brandes

David Brandes, Chairman of the  
Creative & Performing Arts Dept.  
899-5111 ext. 319

Mt. St. Mary College  
Hooksett, N. H. 03106

MT. ST. MARY FOLK SINGERS

Mary Abbott  
485-9536

MADRIGAL SOCIETY

Sr. Anne Vaccarest  
485-9536

Keene State College  
Keene, N. H. 03431  
352-1909 ext. 285

KEENE STATE JAZZ BAND

William Parduff

COLLEGIUM MUSICUM

Ray Rosenstock

CONCERT CHOIR

Hugh Bird

WIND ENSEMBLE

William Parduff

CONCERT BAND

Douglas Nelson

CHAMBER SINGERS

Mariam Goder, Chairman  
Music Department

Nathaniel Hawthorne College  
Antrim, N. H. 03440

NATHANIEL HAWTHORNE CHORUS

Dean Hey

BOATSWAIN AND SLATTERY

(folk blues band)

COLLEGE MUSIC ORGANIZATIONS (cont'd)

New England College  
Henniker, N. H. 03242

NEW ENGLAND COLLEGIUM MUSICUM

Marilyn Ziffrin  
428-2348

CAMERATA SINGERS

Angela Robinson  
428-2348

Plymouth State College  
Plymouth, N. H. 03264

SYMPHONIC BAND

Jerry Whiston

BRASS CHOIR

Jerry Whiston

JAZZ BAND

Jerry Whiston

COLLEGIUM MUSICUM

Jerry Whiston

CLARINET CHOIR

Jerry Whiston

PLYMOUTH SINGERS

Earl Norwood

NEW PLYMOUTH SINGERS

Earl Norwood

Dr. Earl Norwood, Chairman of  
Music Department

536-1550 ext. 313

St. Anselm's College  
Manchester, N. H. 03102

ST. ANSELM'S CHORUS

Mary Bagnell

ST. ANSELM'S CONCERT BAND

Mary Bagnell

University of New Hampshire  
Durham, N. H. 03824  
862-2404

CONCERT CHOIR

Cleveland Howard

CHAMBER CHORUS

Cleveland Howard

BRASS ENSEMBLE

Keith Polk

University of New Hampshire cont'd

WOODWIND QUINTET

David Seiler

NEW HAMPSHIREMEN

Henry Wing

UNH SYMPHONY ORCHESTRA

Alan Grishman

UNH SYMPHONIC WIND ENSEMBLE

Stanley Hettinger

UNIVERSITY BAND (CONCERT BAND)

Stanley Hettinger

UNH MARCHING BAND

Stanley Hettinger

ELECTRONIC MUSIC STUDIO

John Rogers

Paul Verrette, Chairman

Department of Music

Paul Creative Arts Center

OPERA ORGANIZATIONS

N.H. OPERA COMPANY

Michael Maglaras, Artistic Director,  
Palace Theatre  
Hanover Street  
Manchester, N. H. 03101  
669-8021

OPERA LEAGUE OF N.H., INC.

N. H. Regional Committee of New England

Mrs. John McLane, Jr.  
1595 North River Road  
Manchester, N. H. 03101  
625-9557

OPERA NEW ENGLAND, INC.

Sarah Caldwell, Artistic Director  
172 Newbury Street  
Boston, Mass. 02116  
617-267-8050  
Dan Broatman, Regional Development

DANCE ORGANIZATIONS

BALLET

N.H. CIVIC BALLET

Warren Lynch, Director  
P. O. Box 945  
Portsmouth, N. H. 03801  
436-9179

FOLK

CANTERBURY COUNTRY DANCERS

Dudley Laufman, Director  
Canterbury, N. H. 03224  
783-9879

HILLSBORO BARNS COUNTRY DANCERS

Doris Schuster, Director  
Henniker, N. H. 03833  
428-7662

FOLK (cont'd)

SCOTTISH COUNTRY DANCING

Tony Moretti  
Londonderry Turnpike  
Auburn, N. H. 03032

TRUNKIES

Richard Van Kleeck  
5 Sachem Street  
Roxbury Crossing, Mass. 02120  
617-738-4996

DANCE ORGANIZATIONS (cont'd)

COLLEGE DANCE GROUPS

CONTEMPORARY DANCE GROUP

Jean Morrison, Director  
University of New Hampshire  
Durham, N. H. 03824  
862-1234

DANCE AT DARTMOUTH

Susan Morton, Director  
Hopkins Center  
Dartmouth College  
Hanover, N. H. 03755  
646-3438

COLBY JAZZ DANCERS

Joel Conrad, Artistic Director  
Colby College, New Hampshire  
New London, N. H. 03257  
526-2010

FRANCONIA DANCE GROUP

Pepi and Vicki DeChiazza, Director  
Franconia College  
Franconia, N. H. 03580  
823-8045

PLYMOUTH DANCE GROUP

Meredith Champlain, Director  
c/o Adult Education  
Plymouth State College  
Plymouth, N. H. 03426  
536-1550

RIVIER COLLEGE DANCE GROUP

Shareen Boyer  
Rivier College  
Nashua, N. H. 03060

COMMUNITY THEATRE GROUPS

NEW HAMPSHIRE COMMUNITY THEATRE ASSOC.

Winifred Lethbridge, President  
Box 681  
Concord, N. H. 03301  
224-6751

Amherst - AMHERST PLAYERS

Mrs. Eleanor McDowell, President  
Box 312  
Amherst, N. H. 03031  
673-3607

Berlin - THEATRE NORTH

Hal Haywood, Director  
74 Main St.  
Gorham, N. H. 03581  
466-2469

Bristol - PETER SLEEPER PLAYERS

Joy DeVivo, President  
Smith River Road  
Bristol, N. H. 03222  
744-8117

Concord - COMMUNITY PLAYERS OF  
CONCORD

Robert Stuart, President  
Box 681  
Concord, N. H. 03301  
225-6078

Dover - GARRISON PLAYERS

B. Robert Ellis, President  
88 Spruce Lane  
Dover, N. H. 03820  
742-0454

Exeter - EXETER PLAYERS

Mrs. Rosemary Hartman  
Box 504  
Exeter, N. H. 03833  
772-3224

Franklin - TWIN RIVER PLAYERS

Richard Lewis  
82 Pleasant St.  
Franklin, N. H. 03235  
934-3994

Hanover - NORTH COUNTRY COMMUNITY  
THEATRE

Peggy Cooperman, President  
Box 365  
Hanover, N. H. 03755  
643-4574

Henniker - HYS PRODUCTIONS

Ken Gilbride/Mike Greenblatt  
Henniker, N. H. 03242  
428-7003, 7241, 2380

Laconia - STREET CAR COMPANY

Erwin Gleckman, President  
Cottonwood Trail  
Gilford, N. H. 03246  
293-7812

Lancaster - COLONEL TOWN PLAYERS

Don McMurray  
Lancaster, N. H. 03584

Langdon - LANGDON PLAYERS

David Purinton  
Langdon, N. H. 03602

Manchester - N. H. REPERTORY THEATRE

Michael Demos  
300 Grey Street  
Manchester, N. H. 03101

Merrimack - THE MERRIMACTORS

Dr. Michael Couret  
P. O. Box 101  
Merrimack, N. H. 03054  
424-7676

Milford - SOUHEGAN THEATRE COUNCIL AREA  
PLAYERS

David Hoadley  
North River Road  
Milford, N. H. 03055  
673-1349

Nashua - ACTOR SINGERS

Margaret Tamulonis, President  
4 Brookline Street  
Nashua, N. H. 03060  
882-1606

COMMUNITY THEATRE GROUPS (cont'd)

Nashua - NASHUA THEATRE GUILD  
Patricia White, President  
Pinewood Drive  
Amherst, N. H. 03031  
673-1691

North Conway - THE RESORT PLAYERS  
North Conway  
N. H. 03860

Pittsfield - THE PITTSFIELD PLAYERS  
Roland Charron  
Sunset Hill Road  
Pittsfield, N. H. 03263  
435-8864

COMMUNITY THEATRE FOR CHILDREN

Concord - TOY THEATRE (THEATRE OPPORTUNITIES FOR YOUTH)  
Betty Abbott  
Parks and Recreation  
Concord, N. H. 03301

Dover - DOVER YOUTH THEATRE  
Mrs. McCue  
Dover Department of Recreation  
Dover, N. H. 03820

Exeter - BACKPACK PLAYERS  
Joan Lyford  
9 Center Street  
Exeter, N. H. 03833  
772-4550

Henniker - HYS PRODUCTIONS  
Ken Gilbride, Director  
P. O. Box 397  
Henniker, N. H. 03242  
428-7241

Manchester - N.H. CHILDREN'S THEATRE  
Michael Demos  
300 Grey Street  
Manchester, N. H.  
627-1725

North Conway - PIETPIPPER CHILDREN'S THEATRE  
Mrs. Barbara Morton  
Jackson, N. H. 03846



PROFESSIONAL THEATRE

WINTER

Theatre by the Sea  
Jon Kimball, Managing Director  
Ceres Street  
Portsmouth, N. H. 03801  
431-6660

New Hampshire Shakespeare Company  
(Spring '75)  
New Hampshire Performing Arts Center  
Palace Theatre  
Hanover Street  
Manchester, N. H. 03101  
669-8021

CHILDREN'S THEATRE

WINTER

Project TRY  
Susan Goldin, Managing Director  
Paul Arts Center  
University of New Hampshire  
Durham, N. H. 03824  
862-2150

Flapdoodle Puppets  
Mrs. Helen Ferguson, Puppeteer  
North River Road  
Milford, N. H. 03055  
673-3000

COLLEGE THEATRE GROUPS

NATHANIEL HAWTHORNE THEATRE

Bill Douglas, Director  
Nathaniel Hawthorne College  
Antrim, N. H. 03440  
478-3271

MASK AND DAGGER

John Edwards, Director  
Paul Creative Arts Center  
University of New Hampshire  
Durham, N. H. 03824  
862-1234

ANSELMIAN-ABBEY PLAYERS

Ed Comiskey, Director  
Chapel Arts Center  
St. Anselm's College  
Manchester, N. H. 03102  
669-1030

YANKEE PLAYERS

Rich Rice, Director  
New England College  
Henniker, N. H. 03242  
428-2342

KEENE THEATRE DEPARTMENT

D. Guidotti  
Keene State College  
Keene, N. H. 03431  
352-1909

DARTMOUTH PLAYERS

Rod Alexander, Director  
Hopkins Center  
Dartmouth College  
Hanover, N. H. 03755  
646-1110

PLYMOUTH PLAYERS

Roi White, Director  
Silver Hall  
Plymouth State College  
Plymouth, N. H. 03264  
536-1550

SOLBY COLLEGE NEW HAMPSHIRE

Eugene Youngkin, Director  
Sawyer Arts Center  
New London, N. H. 03257  
526-2010  
Tomie de Paola, Director  
Children's Theatre  
Colby College New Hampshire

COLLEGE THEATRE GROUPS (cont'd)

RAVENCROFT PLAYERS

Robert Alvin, Director  
Franklin Pierce College  
Rindge, N. H. 03461  
899-5111 ext. 300

FRANCONIA THEATRE GROUP

Ron Bennett, Director  
Franconia College  
Franconia, N. H. 03580  
823-8045

POETRY

POETRY SOCIETIES OR READING GROUPS

Nathaniel Hawthorne College, Antrim  
David Blume, Coordinator  
Poetry Readings/Coffee House  
Antrim, N. H. 03440

University of New Hampshire, Durham

English Department  
Charles Simic  
Durham, N. H. 03824

Franconia College, Franconia

Bob Grenier, Coordinator  
Poetry Society  
Franconia College  
Franconia, N. H. 03580

Dartmouth College, Hanover

Thursday Poets  
Baker Library Poetry Room  
Hanover, N. H. 03755  
Anselm Parlatore/Bob Siegel  
643-5618

Keene State College, Keene

Sigma Pi Epsilon (Literary  
Organization)  
Dr. David Battenfeld, Advisor  
Keene, N. H. 03431  
352-3457, 352-1909

St. Anselm's College, Manchester

Sheol Coffee House/Art Center  
Father Martin Mager, Advisor  
Manchester, N. H. 03102  
669-1030

Plymouth State College, Plymouth

Jabberwock/Silver Hall  
Plymouth, N. H. 03264

Franklin Pierce College, Rindge

English Club  
W. Ritchie Darling, Advisor  
Rindge, N. H. 03461  
899-5551 / 431-253-9780

POETRY PUBLICATIONS

Granite Magazine  
Box 774  
Hanover, N. H. 03755  
George Young, Editor  
802-649-1827

Poetry Society of New Hampshire

Priscilla Daneau, President  
Box 525  
Concord, N. H. 03301  
224-2462



POETRY (cont'd)

GENERAL INFORMATION

Marie Harris  
Poetry in the Schools  
c/o N. H. Commission on the Arts  
Phenix Hall - 40 North Main St.  
Concord, N. H. 03301

ART GALLERIES

PUBLIC OR PRIVATE

ARTS AND SCIENCE CENTER, NASHUA  
14 Court Street  
Nashua, N. H. 03060  
883-1506

CURRIER GALLERY OF ART  
David Brooke, Director  
192 Orange Street  
Manchester, N. H. 03104  
669-6144

MANCHESTER INSTITUTE OF ARTS AND  
SCIENCE  
James Boatner, Executive Director  
148 Concord Street  
Manchester, N. H. 03101  
623-0313

NEW HAMPSHIRE ART ASSOCIATION  
Grace Casey, Executive Director  
24 West Bridge Street  
Box 1075  
Manchester, N. H. 03105  
622-0527

PHENIX HALL ART GALLERIES  
Kate Torres, Director  
40 North Main Street  
Concord, N. H. 03301

SAINT GAUDENS' HISTORIC SITE  
John Dryfhout, Curator  
RR 2  
Windsor, Vt. 05089 (Cornish)  
675-2055

SHARON ART GALLERY  
John J. Dolan, Director  
RD 2  
Peterborough, N. H. 03458  
924-3582

SCHOOL AFFILIATED

ART CENTER AT HARGATE  
Thomas R. Barrett, Head - Art Dept.  
St. Paul's School  
Concord, N. H. 03301  
225-3341

CHAPEL ARTS CENTER  
Joseph Scannell, Director of Galleries  
St. Anselm's College  
Manchester, N. H. 03102  
669-1030

FRANCONIA COLLEGE ART GALLERY  
Pat Martilino, Exhibition Coordinator  
Franconia College  
Franconia, N. H. 03580

HOPKINS CENTER  
Jan van der Marck, Director of Galleries  
Dartmouth College  
Hanover, N. H. 03755  
646-2422

LAMONT GALLERY  
Bridget Paddock, Assistant Director  
The Phillips Exeter Academy  
Exeter, N. H. 03833  
772-4311

ART GALLERIES (cont'd)

LAMSON LIBRARY ART GALLERY

Mary C. Taylor, Chairman  
Art Department  
Plymouth State College  
Plymouth, N. H. 03264  
536-1550

NATHANIEL HAWTHORNE ART GALLERY

David Carroll, Exhibition Coordinator  
Gikas Room, Library  
Nathaniel Hawthorne College  
Antrim, N. H. 03440  
456-3947

RIVIER COLLEGE GALLERY

Jafar Shoja, Chairman  
Art Department  
Rivier Arts Center  
Rivier College  
Nashua, N. H. 03060  
888-1311

ROTUNDA GALLERY

Sister Shirley Anne Costignan  
Exhibition Coordinator  
Mt. St. Mary College  
Hooksett, N. H. 03106  
485-9536

SAWYER FINE ARTS CENTER

William Holst, Chairman of the Art Dept.  
Colby College of New Hampshire  
New London, N. H. 03257  
526-2010

LOUISE E. THORNE MEMORIAL ART GALLERY

Jocelyn Bródie, Director  
Keene State College  
Keene, N. H. 03431  
352-1909

UNIVERSITY ART GALLERIES

Paul Creative Arts Center  
University of New Hampshire  
Durham, N. H. 03824  
862-1234

COLLEGE ARTS CENTERS

CHAPEL ARTS CENTER

Father Eugene Rice  
St. Anselm's College  
Manchester, N. H. 03102  
669-1030

HOPKINS CENTER

Peter Smith, Director  
Dartmouth College  
Hanover, N. H. 03755  
646-2422

PAUL ARTS CENTER

University of New Hampshire  
Durham, N. H. 03824  
862-2291

RIVIER ARTS CENTER

Jafar Shoja  
Rivier College  
Nashua, N. H. 03060  
888-1311

TOURING ARTS

For a Complete Listing of Touring Arts:

THE ARTS EXCHANGE  
Kathy Lillilea, Program Director  
Hopkins Center  
Hanover, N. H. 03755  
646-2005

For Information about Poetry Residencies:

NEW HAMPSHIRE POETRY IN THE SCHOOLS  
Marie Harris, Coordinator  
New Hampshire Commission on the Arts  
40 North Main Street - Phenix Hall  
Concord, N. H. 03301  
271-2780

For Information about Dance Residencies:

Deborah Cowan, Dance Coordinator  
New Hampshire Commission on the Arts  
40 North Main Street - Phenix Hall  
Concord, N. H. 03301  
271-2780

For Information about Arts Teaching Aids:

REGIONAL CENTER FOR EDUCATIONAL TRAINING  
Wilson Hall  
Hanover, N. H. 03755  
646-2010

Additional Information about Touring Aid and Groups Available:

NEW HAMPSHIRE COMMISSION ON THE ARTS  
Susan Taylor, Arts Information Coordinator  
40 North Main Street - Phenix Hall  
Concord, N. H. 03301  
271-2780

FILM RESOURCES

FILMMAKING IN THE SCHOOLS

Phillip Buell, Coordinator  
N. H. Commission on the Arts  
40 North Main Street - Phenix Hall  
Concord, N. H. 03301  
271-2780

CENTER FOR UNDERSTANDING MEDIA

75 Horatio Street  
New York, N. Y. 10614  
212-989-1000

MEDIA SERVICES

John Bardwell, Director  
Hewitt Hall  
University of New Hampshire  
Durham, N. H. 03824  
862-2240

NEW HAMPSHIRE COMMISSION ON THE ARTS

Public Media Program - Dave Cline  
40 North Main Street - Phenix Hall  
Concord, N. H. 03301  
271-2780

FILM SOCIETIES

NASHUA PUBLIC LIBRARY FILMS & VIDEO

Clarke S. Davis  
2 Court Street  
Nashua, N. H. 03060  
883-4141

TILTON SCHOOL FILM FESTIVAL

Robert Whitehead  
Tilton School Humanities Division  
Tilton, N. H. 03276  
286-4342

NEW ENGLAND COLLEGE

Film Series and Zig Zag Films  
Henniker, N. H. 03243  
428-9481

MANCHESTER INSTITUTE OF ARTS AND SCIENCES

James Boatner, Director  
148 Concord Street  
Manchester, N. H. 01104  
623-0313

FRANCONIA COLLEGE FILM SOCIETY

Dawn Holmes  
Franconia College  
Franconia, N. H. 03580  
823-5579

CURRIER GALLERY OF ART

Film Series  
Orange Street  
Manchester, N. H. 03104  
669-6144

WALKER LECTURE SERIES

Duer Thompson  
Guy Swenson  
9 Capitol Street  
Concord, N. H. 03301  
224-2341

CONCORD PUBLIC LIBRARY FILM SOCIETY

Lois Markey  
43 Green Street  
Concord, N. H. 03301  
225-2743

UNIVERSITY OF NEW HAMPSHIRE

MUSO Film Series, University Theatre  
Film Series, Weekend Film Series  
Memorial Union Building  
Durham, N. H. 03824  
862-1527 (Memorial Union Info.)

FILM SOCIETIES (Cont'd)

GORDON-NASH LIBRARY

Barbara Shaw, Librarian  
"Films and ..."  
New Hampton, N. H. 03256  
744-8061

DARTMOUTH COLLEGE FILM SOCIETY

Blair Watson, Faculty Advisor  
Robinson Hall  
Hanover, N. H. 03755  
646-1110

ST. ANSELM'S COLLEGE FILM SERIES

Fr. Eugene Rice  
St. Anselm's College  
Manchester, N. H. 03101  
669-1030

FINE FILM SOCIETY

Keene State College  
Keene, N. H. 03134

NEW HAMPSHIRE LEAGUE OF CRAFTSMEN

\*LEAGUE HEADQUARTERS

205 North Main Street  
Concord, N. H. 03301  
224-3375

\*CONCORD ARTS AND CRAFTS

36 North Main Street  
Concord, N. H. 03301  
228-8171

FRANCONIA CRAFTS SHOP

(May 26-Oct. 12)  
Franconia Notch  
Franconia, N. H. 03580

\*LEAGUE OF N. H. CRAFTSMEN

62 East Pearl Street  
Nashua, N. H. 03060

\*CONWAY'S HOME INDUSTRY

Main Street  
North Conway, N. H. 03860

WOLFEBORO ARTS AND CRAFTS

(June 10-December 25)  
Route 28  
S. Wolfeboro, N. H. 03894  
569-3489

\*EXETER LEAGUE OF N. H. CRAFTSMEN

61 Water Street  
Exeter, N. H. 03833

\*LEAGUE OF N. H. CRAFTSMEN

13 Lebanon Street  
Hanover, N. H. 03755  
643-5050

\*LEAGUE OF N. H. CRAFTSMEN

(June 15 - Oct. 12)  
Route 3  
Meredith, N. H. 03253

SANDWICH HOME INDUSTRY

(June 15 - Oct. 12)  
Center Sandwich, N. H. 03227  
284-6831

SHARON HANDICRAFT SHOP

(April 28 - Christmas)  
Route 123  
Sharon, N. H. 03458  
924-3582

(All League Shops offer winter classes  
for adults and children. Some shops  
offer summer courses.)

\* Open all year

ARTS INFORMATION

"THE STATE OF THE ARTS"

N. H. Commission on the Arts  
Concord, N. H. 03301  
Susan Taylor, Arts Information  
271-2780

ARTS REPORTING SERVICE

9214 Three Oaks Drive  
Silver Spring, Maryland 20901  
Charles C. Mark, Publisher  
301-585-8560

A.C.A. REPORTS

Associated Councils of the Arts  
Room 820  
1564 Broadway  
New York City, New York 10036  
212-586-3731

ARTS BUSINESS

Business Committee for the Arts  
1700 Broadway, 5th Floor  
New York, N. Y. 10019  
Gideon Chagg  
212-765-5980

MUSIC EDUCATORS JOURNAL

Music Educators National Conference  
1201 16th Street, NW  
Washington, D. C. 20036

ART EDUCATION

Journal of National Art Education  
Association  
1201 16th Street, NW  
Washington, D. C. 20036

NEW ENGLAND STATE ARTS COUNCILS

CONNECTICUT COMMISSION ON THE ARTS

Tony Keller, Executive Director  
340 Capitol Avenue  
Hartford, Conn. 06106  
203-566-4770

MASSACHUSETTS COUNCIL ON THE ARTS AND HUMANITIES

Louise Tate, Executive Director  
14 Beacon Street  
Boston, Mass. 02108

VERMONT COUNCIL ON THE ARTS

Peter Fox Smith, Executive Director  
State Administration Building  
Montpelier, Vermont 05602  
802-828-3291

MAINE STATE COMMISSION ON THE ARTS AND HUMANITIES

Richard D. Collins, Executive Director  
146 State Street  
Augusta, Maine 04330  
207-289-2724

RHODE ISLAND STATE COUNCIL ON THE ARTS

Ann Vermel, Executive Director  
4365 Post Road  
East Greenwich, Rhode Island 02818  
401-884-6410

NEW HAMPSHIRE COMMISSION ON THE ARTS

40 N. Main St., Phenix Hall  
Concord, N. H. 03301  
John G. Coe, Executive Director  
271-2789



**BOAT CRUISES**

**ON LAKE WINNIPESAUKEE**

MV MT. WASHINGTON, Capacity 1,250. Three round trips (3 hours) daily from Weirs Beach and two from Wolfeboro, stopping at Center Harbor (Mond., Wed., Frid.), and Alton Bay (Tues., Thurs., Sat., Sun.) May 25 through September 8.

U. S. MAIL BOAT - MV SOPHIE C. Capacity 125. Departs Weirs Beach twice daily, delivering mail to islands seldom seen by visitors. 1:30 June 15 - October 14. 9:30 July 1 - Labor Day.

MV DORIS E., capacity 125. Departs Weirs Beach & Meredith several times daily (10, 12, 2 & 4 o'clock). July 1 through Labor Day. For charter and group rates call 366-5531 or write: Flagship Corp., Box 367, Weirs Beach, N. H. 03246 for schedule.

**LAKE SUNAPEE**

MV MT. SUNAPEE II, capacity 120. Leaves Sunapee Harbor twice daily, 10:30 - 12:00 and 2:30 - 4:15. Seasonal operation June 29 - Labor Day. For reservations and information call: John F. McGrath, Lake Ave., Sunapee, 763-5430.

**TO ISLE OF SHOALS**

Two vessels leave from New Hampshire Port Authority dock on Market Street, Portsmouth, from July 1 to Labor Day. MV VIKING, narrated cruise daily through the islands. MV VIKING STAR, trip to Star Island. Reservations essential for both. For information telephone 436-9839.

EDUCATIONAL RESOURCES

Creative Classrooms

R.F.D. #2, Box 86  
Raymond, N. H. 03077

Tel. 895-2437

Pratte, Alice H.

75 Margeurite St.  
Manchester, N. H. 03103

Tel. 669-2999

Curriculum Resource Center

Franconia College  
Franconia, N. H. 03580

Trina W. Osher  
Tel. 823-5578

The Advisory for Open Education

90 Sherman St.  
Cambridge, Mass. 02140

Media-Mix

Claretian Publications  
221 W. Madison St.  
Chicago, Illinois 60606

The Dorr Mill Store

Main St.  
Guild, N. H. 03754

863-1197

Armington, David & Rosemary

Box 72  
Kearsarge, N. H. 03847

356-3015

"Ideas for Creative Learning" Workshops

Perceptual-Motor Program Seminars, using visual aids to expose groups to various aspects of child development and attitudes.

Samples of student invented and commercial materials to be used in the teaching of reading, math, science and social studies, plus few books useful for planning art projects, available to elementary school teachers. Workshops by faculty members.

Establish teacher centers in major cities - newsletter reports on current activities and offers useful ideas for open education classrooms.

Reviews of films and books, tips on other value ed resources for classrooms.

Wool is made at this mill. Field trip can be arranged to see how wool is made or to obtain woolen materials for art projects.

Workshops: language arts, reading, mathematics; activity centered classrooms - philosophical underpinnings, organization curriculum & evaluation.



EDUCATIONAL RESOURCES (Cont'd)

N. H. COOPERATIVE EXTENSION SERVICES

(Eleven offices as listed below)

Information on areas of agriculture, home economics, forestry & community development.

State 4-H Office

Room 102, Taylor Hall

University of New Hampshire

Durham, N. H. 03824

Tel. 862-2180

Belknap County

Box 368

Laconia, N. H. 03246

Tel. 524-1737

Carroll County

Bolduc Block

Conway, N. H. 03818

Tel. 447-5922

Cheshire County

Box 798

Keene, N. H. 03431

Tel. 352-4550

Coos County

148 Main St.

Lancaster, N. H. 03584

Tel. 788-4961

Grafton County

P. O. Building

Woodsville, N. H. 03785

Tel. 747-2377

Hillsboro County

2 Mt. Vernon St.

Milford, N. H. 03055

Tel. 673-2510

Merrimack County

55 Pleasant St.

Concord, N. H. 03301

Tel. 225-5505

Rockingham County

Box 200

Epping, N. H. 03042

Tel. 679-5616

Strafford County

62 S. Main St.

Rochester, N. H. 03867

Tel. 332-5808

Sullivan County

45 Crescent St.

Claremont, N. H. 03743

Tel. 543-3181

EDUCATIONAL RESOURCES (cont'd)

James A. Bellanca, Coordinator

National Center for Grading Alternatives  
New Trier E. High School  
Winnetka, Illinois 60093

Co-sponsors conferences & workshops,  
& summer courses with State agencies  
or professional organizations.

Mrs. Mary Cox Small

New Searles Road Elem. School  
Shady Lane Road  
Nashua, N. H. 03060

Speaker: Early childhood, other areas.

Ernest Bettez

Gardner, Mass.

Tel. 617 632-2217

Child development specialist.  
Slide show on home-made teaching aides.

American Institute for Creative  
Education

280 State St.  
Augusta, Maine 04330

Tel. 207 622-5662

Seminars on Humanistic Education

N. E. Aeronautical Institute  
& Daniel Webster Jr. College

W. F. Friesemer, Jr. Pres.  
University Drive  
Nashua, N. H. 03060

Program presents an approach which  
is designed (a) to develop increasing  
levels of perceptual awareness through  
firsthand multisensory experiences,  
(b) to enable students to more readily  
perceive interdisciplinary applications  
of concepts, and (c) to broaden and  
enrich reasoning processes. Airplane  
flights are used to acquaint staff  
with actual multisensory experience  
at the macro and micro levels.

## HISTORIC RESOURCES

### CANAAN

Canaan Historical Museum

Canaan St. off Rte. 4. Small collection of indian artifacts found on lake shore nearby; collection of Americana, historic articles, rare scientific eqt. circa 1850. Building dates from 1839. Open July 6 - August 31, Saturdays 1-4 p.m. Admission free.

### CANTERBURY

Shaker Village, Inc.

Historic, sociology, religion. Shaker village is a restoration of an 18th century utopian community. Open May 28 through Labor Day with guided tours. Closed Sundays and Mondays.

### CHARLESTOWN

Fort No. 4

Walbach St. Replica of French and Indian War log bastion being rebuilt. Seven fort buildings, watch tower, stockade, two barns, museum. Demonstrations of colonial, civilian and military crafts. Open May 18 to October 21 daily; weekends from May 18 to June 15; and Labor Day to October 21. Group appointments. Admission \$1.25; children 7-12 50¢.

### CHARLESTOWN

The Foundation for Biblical Research & Preservation of Primitive Christianity

A beautiful museum of antiques housing a small, but excellent library on the Bible and also historical material on Christian Science.

### CHESTERFIELD

Antique Carriage & Sleigh Museum at the Coach House

Large display of horse-drawn vehicles, farm machinery and memorabilia of the horse era. Charming century-old gift house featuring colonial reproductions; local handicrafts and collector's items. Open daily May 1 through October 20. Adults 75¢; children 50¢.

CONCORD

New Hampshire Historical Society

30 Park St. A privately supported organization devoted to the collection and preservation of objects, printed matter, and manuscripts relating to the history of New Hampshire and its people. A library and museum are maintained in the Society's building. Open Monday through Saturday 9-4. Admission free.

CORNISH

Saint-Gaudens National Historical Site

Located just off N. H. Rte. 12A in Cornish. Commemorates Augustus Saint-Gaudens (1848-1907) an American sculptor. Among points of interest are his home, "Aspet", furnished with original pieces; the studio where he worked; gardens designed by him; and approximately 150 examples of his sculpture. Open May 25 to October. Adults 50¢; children under 16, no charge.

DOVER

Woodman Institute

182 Central Avenue. Exhibits of birds, animals, insects, reptiles, minerals, indian artifacts, weapons. War memorial room contains exhibits of all American wars. New Dunaway Hall has 29 display cases of historical items. The 17th Century Dame Garrison House is preserved here. Open year round from 2-5 p.m., except Monday. Admission free.

DURHAM

Gen. John Sullivan House

23 Newmarket Road. Built in the period 1729-1741 the house was purchased in 1764 by John Sullivan, a Major General of the Continental Army during the War for Independence and one of Washington's ablest generals. A leader of some 400 men, Sullivan captured Fort William & Mary December 14, 1774. Although the building has undergone some alterations, it is largely original.

DURHAM

Durham Historical Assn. Museum

Rtes 4 & 108. Exhibits of early Durham artifacts, documents, cemetery inscriptions. Open July through August, Tues. - Sat. 1-4 p.m. Also open by appointment. Inq: 868-7433. Admission free.

EXETER

Cincinnati Hall

Front St. Historic District. Owned by Society of Cincinnati as their headquarters and museum. Open May 1 - October 30 Tuesday and Thursday, 2-4 p.m.

EXETER

The Lamont Gallery, Phillips Exeter Academy

Tan Lane, near Front Street. Other Academy buildings can be visited by arrangement. The first Academy building, now a private residence, was built in 1781, the year of the founding of the Academy. The oldest dormitory, Abbott Hall, was built in 1855. Bell House on Front Street, now the admissions office, was built c. 1800 and is considered one of the finest examples of the period. Gilman House, also on Front Street, was built in 1740. It is the residence of the principal of the Academy. Open during term time from mid-September to mid-June, Tuesday through Saturday, 9:00 a.m. to 5:00 p.m.; and Sunday, 2:00 p.m. to 5:00 p.m. Also open during summer school.

FRANKLIN

Daniel Webster Birthplace

Boyhood home of Daniel Webster, orator, congressman and twice Secretary of State. Built around 1780, restored in 1913. Open daily from June 23 to Labor Day. Admission adults 50¢, children under 18, no charge.

HAMPTON

Tuck Memorial Museum

40 Park Ave. "The Showplace of Hampton's Past." Exhibits of "Made in Hampton" items, trolley exhibit, antiques, photographs, etc. Open July through August, daily 1:00 p.m. to 4:00 p.m. Admission free.

HANOVER

Dartmouth College Museum

Collections in zoology; entomology; geology; paleontology; and history. School loan program. Open daily, with some special summer and vacation hours.

HART'S LOCATION  
Bemis Museum

Rte. 302 at The Inn Unique. Colonial furnishings. Rare White Mt. books and maps. Tel: 374-2323. Open June 15 - October 15; weekends June 1-15; October 15-31. Admission adults \$1.00; children over 12, 50¢.

HILLSBORO  
Franklin Pierce Homestead

Rte. 31 west of Hillsboro. Historic home of New Hampshire's only President. Built in 1804, contains period furniture, utensils, imported scenic wallpaper, stenciled walls. Completely restored to reflect the 1804-39 period; many early architectural features now exposed. Open mid-June to Labor Day. Admission adults 50¢; children through age 18, no charge.

HOLLIS  
The Meeting House

Located on village green. Ten room 1744 building holding three individually owned shops. Enchanted doll house; gift shop; four seasons dress shop. Open all year Tuesday through Saturday 10-5; Sunday 1:30 - 5.

HOPKINTON  
N. H. Antiquarian Society  
Museum

Main St. Photographic record of artifacts in process. Programs monthly May-September. Open July 1 to September 1 Wednesdays 2-5 p.m. Library open by appointment, tel: 224-1389.

JACKSON  
Wildcat Valley Country Store  
& Museum

Authentic old-fashioned country store operating in tradition of 1880's, specializing in the fine foods and oddments of yesteryear. Open all year. Tel: 383-9218.

KEENE  
Colony House Museum

104 West St. Collections of early American glass and Hampshire pottery. Large collection of memorabilia. Open May 1 - October 15, Tuesday to Sunday 10:00 a.m. to 4:40 p.m. Admission \$1.00.



KEENE

The Wyman Tavern

339 Main St. Period house and museum.  
Open May 30 - October 31 by appointment.  
Donations.

LANCASTER

Wilder-Horton House

226 Main St. Collection of local historic  
interest. Open July 1 - August 31, or by  
appointment. Tel: 788-4690. Hours: 2 - 4  
and 7- 8 weekdays.

LITCHFIELD

Phillips Museum of Natural  
History

Located on Rte. 102, exhibits of birds,  
animals, fish, shells and collection of  
minerals. Lecture service given to groups.  
Open May 1 to October 1.

MANCHESTER

Historic Association Museum

129 Amherst St. Exhibits. Library of  
printed and manuscript materials relating  
to history of greater Manchester area.  
Open all year, Tuesdays through Fridays  
9:00 a.m. to 4:00 p.m.; Saturdays 10:00 a.m.  
to 4:00 p.m. Admission free.

MANCHESTER

Stark House

2000 Elm St. Home of General John Stark,  
hero of battles of Bunker Hill and Bennington.  
Built in 1736 by his father. Owned by DAR.  
Open May 15-October 15 Wednesdays and  
Sundays, 1:30-4:30 p.m. Groups encouraged  
by appointment, 625-5753. Donation: adults  
50¢; children 25¢.

MOULTONBORO CORNER

The Old Country Store &  
Museum

Rte. 25 & 109. A visit to the Old Country  
Store is a giant step back in time. Museum  
on second floor houses a fascinating collection  
of antique furniture, implements and tools.  
Steve & Cile Holden, proprietors, tel: 476-9781.

NEW CASTLE

Ft. Constitution

1B and Sullivan Rd. Site of Fort William &  
Mary. An active military site for more than  
300 years, strategically guarding the entrance  
to Portsmouth Harbor. Remains of the fort  
reflect its service to the country in all its  
wars. Part of the site is retained by the  
Federal government as an active Coast Guard  
Station; the rest was returned to the State  
in 1961 and is stabilized by the State  
Division of Parks.

NEW IPSWICH  
Barrett House

Main St. Exhibits; impressive mansion with period furnishings. Open June to October. Admission \$1.00.

NEWPORT  
Clock Museum

43 Park Street. Sixteenth and twentieth century time pieces which tell time by water, sand, light, shadow, gravity and mystery. Open all year. Admission adults 95¢, children under 13, 50¢.

PETERBOROUGH  
Historical Society

Grove St. Local historical and genealogical collections. Open June 17-August 30. Admission free.

PORTSMOUTH  
Athenaeum

One of best preserved Federal period commercial structures in New England. Entered in National Register of Historic Places. Multiple architectural gems, early 1800's.

PORTSMOUTH  
Thomas Bailey Aldrich Memorial

386 Court St. Built about 1790, scene of the Story of a Bad Boy. Open daily from 10:00 a.m. to 5:00 p.m. except Sunday, June 15 to Sept. 15. Restored as an early home with family touches everywhere. Admission 50¢.

PORTSMOUTH  
Richard Jackson House

Northwest St. Built in 1664. Open May 15 through October 15, Monday through Saturday, 10:00 a.m. to 5:00 p.m. Exhibits; 17th century architecture details, furniture. Admission 50¢.

PORTSMOUTH  
Governor John Langdon  
Mansion Memorial

143 Pleasant St. Built in 1784, described by Washington as the "handsomest house in Portsmouth". Exhibits, antiques, gardens. Open May 15 through October 15, Monday through Saturday. Admission \$1.00.

PORTSMOUTH  
The Moffat-Ladd House

154 Market St. Built in 1763. Home of Gen. William Whipple, signer of the Declaration of Independence. 18th century mansion. Open May 15 to October 15, Monday through Saturday 10:00 a.m. to 5:00 p.m.



PORTSMOUTH

Rundlett-May House

364 Middle St. Exceptional three-story Federal style mansion owned by Society for the Preservation of New England Antiquities. Open June 1 - October 31; Tuesday, Thursday, Saturday 1:00 p.m. to 5:00 p.m. Admission \$1.00, children under 12, free.

PORTSMOUTH

Strawbery Banke

Court, Washington, Hancock & March Street. Ten-acre outdoor museum. Multi-million dollar historic preservation project embracing thirty colonial houses. Crafts, exhibits, orientation film to prepare for tour, gift shops, coffee shop. Special military, musical and craft events in season. Open May 1-October 31, 9:30 - 5:00 p.m. daily. Admission adults \$2.75; children under 16, 75¢; under 6, free. Group rates available. For further information contact Mr. Edward Lynch, Director, Strawberry Banke, Inc., Portsmouth 03801.

PORTSMOUTH

Warner House

Daniel & Chapel Streets. (Circa 1716) First rate example of great urban dwelling built of brick. An engaging glimpse of how people of importance lived in 18th century Portsmouth. Open mid-May to mid-October 10:00 a.m. to 5:00 p.m. on weekdays. Admission adults \$1.00; children under 12, 50¢; groups of 20 or more \$1.50 each. "Registered National Historic Landmark".

PORTSMOUTH

Wentworth-Coolidge Mansion

Two miles from Portsmouth proper, off State 1-A, overlooking Little Harbor and the mouth of the Piscataqua River. Original home of Benning Wentworth, first royal governor of the Separate Province of N. H. (1741-66). Open daily Saturday, Sunday, Wed - Fri. September 4 to October 14. Admission 50¢; children through age 18, no charge.

RUMNEY

Mary Baker Eddy Historic House

Home of founder of Christian Science, late 1850's. Open May 31 to October 31 daily except Mondays, 10:00 a.m. to 5:00 p.m. Sundays 2:00 p.m. to 5:00 p.m. Tel. 786-9943.

SUTTON  
Wright's Museum

Lake Blaisdell, Rte. 114. Open May 1 to cold weather. Admission 25¢.

WARNER  
Mink Hills P. O. & General Store Bygone's Museum

Newmarket Rd. at Waterloo. Exhibits of old tools, tinware, woodenware, costumes, candlemaking, cobblers' equipment, spinning & weaving tools, old country store (no sales). Open June 15 to October 15 by appointment. Tel. 456-3486. Groups invited.

WARREN  
Morse Museum

Collections of mounted animals, weapons, trophies, and curios from many parts of the world.

WASHINGTON  
Washington Museum

Opp. Post Office. Exhibits of American transportation from colonial times to early auto age. Open all year by appointment. Admission free. Inq: Alfred Babb, Custodian.

WEARE  
Little Nature Museum

South Rd., 9 mi. w. of Concord off Rte. 77. Exhibits on archeology, geology, sea life, plants and insects. Live animals, science library, fossils, birds. Self-guiding nature trails. Open all year. Call for appointment, 529-7180. Small groups encouraged. Admission free.

WEBSTER  
Meeting House Museum

Rte. 127. Usually open weekends 2-5; July 4 - September 3. Open August 17-24 from 1-5 p.m. for arts and crafts sale.

WOLFEBORO  
Clark House

South Main St. Built in 1778, the Clark family homestead was inherited by Greenleaf Clark, a lifelong resident of Wolfeboro. Mr. Clark's home of six rooms arranged around a chimney with flues for five fireplaces is furnished by gift or loan from sponsors. Open July 3 to September 5. Admission free.

WOLFEBORO  
The Libby Museum.

Route 109 north of The Governor Wentworth Highway. Local history; stuffed specimen; indian artifacts. Open June 24 through Labor Day. Closed Mondays. Suggested donations: adults 25¢, children 10¢. Open to school groups in winter by appointment. Inq: Jackson H. Emery, Director, Selectmen's Offices, Wolfeboro.

For further information on historical places, see NEW HAMPSHIRE HISTORICAL MARKERS, published by the State Historical Commission, Records & Archives Center, 71 South Fruit St., Concord, N. H. Tel. 271-2236. Booklet also available at Division of Economic Development, State House Annex, Concord, N. H. 03301.

For additional information on museums and historic houses see: HISTORIC HOUSES AND MUSEUMS OF NEW ENGLAND published by The New England Council, 1032 Statler Office Building, Boston, Mass. 02116, Stephen W. Winship, Chairman, Travel Development Committee. Booklet fee: 25¢.

ORGANIZATIONAL & STATE AGENCY RESOURCES

AERONAUTICS COMMISSION

Address Concord Airport  
Concord, N. H. 03301

Telephone 271-2551

Contact Person J. R. Sweeney  
W. E. Leber

Services Knowledge of aviation, history of aviation in N. H.  
Listing of airports in N. H. that are served by airlines.  
Listing of all airports in N. H. with emphasis on those  
open to the public; listing of seaplane bases in N. H.  
Characteristics of airports in N. H., including Pease Air  
Force Base. Laws of N. H. relating to aviation.

AGING, N. H. STATE COUNCIL ON

Address 19 Storrs Street  
Concord, N. H. 03301

Telephone 271-3362

Contact Person Paul Hendrick, Director

Service The objective of the N. H. State Council on Aging (SCOA)  
in the development of programs and activities for older  
persons in the State is to assist local communities and  
areas in developing a comprehensive range of services for  
older adults, regardless of financial or social status.  
SCOA Field Coordinators - Coos, Grafton, & Carroll Counties:  
Thomas E. Pryor, Jr., 16 School St., Littleton, N. H. 03561;  
Sullivan & Cheshire Counties: Roger A. Vachon, 14 Parkhurst  
St., Lebanon, N. H. 03766. Extensive film library on topics  
concerning aging and the aged. For scheduling use of films  
contact Carolyn Vaughan at the Concord office, 271-2751.

Time Limitation For speaking engagements, a thirty day advance notice is  
requested.

Geographic Area State of New Hampshire

AGRICULTURE, DEPARTMENT OF

**Address** State House Annex  
Concord, N. H. 03301

**Telephone** 271-3551

**Contact Person** Roy Howard  
Promotion Director

**Services** Visits to N. H. Maple Sugar Houses. (Maple syrup season arrives about February 28 and generally lasts until April 10.)  
Visits to poultry farms.  
Visits to N. H. apple orchards. Brochures available from Agriculture Department. Films available: "N.H. Maple" running time: 22 min. "A Good Life..N.H. Family Farm", running time: 30 min. Normally these films would be available within two week's notice.

AIR POLLUTION CONTROL AGENCY

**Address** State Laboratory Building  
Hazen Drive  
Concord, N. H. 03301

**Telephone** 271-2282

**Contact Person** Forrest H. Bumford

**Services** Slides and talks by engineers or technicians, dependent on type of talk in field of air pollution. Sampling network, meteorological aspect, control measures, legal.

**Geographic Area** State of N. H.

ALCOHOL & DRUG ABUSE PROGRAM

**Address** 66 South Street  
Concord, N. H. 03301

**Telephone** 271-3531

**Contact Person** Clarence Jeffrey, Education Coordinator

**Services** Primary prevention effort to foster responsible attitude toward alcohol. Assistance in developing curriculum materials, assistance in integrating alcohol and drug education into general courses, conducting in-service training for teachers.

ALCOHOL & DRUG ABUSE PROGRAM (cont'd)

**Services (cont'd)** Community assistance to community groups of all kinds, and professionals needing a special educational service. Consultation to other professionals providing direct service. Conducting workshops and seminars. Custody of books, pamphlets, brochures. Special services such as breathalyzer schools, radio and TV programs. Loan of films, answering of inquiries regarding alcohol and drugs.

**Time Limitations** Minimum of two weeks notice for speaker.

**Geographic Area** State of N. H.

AMERICAN REVOLUTION BICENTENNIAL COMMISSION

**Address** 37 Pleasant Street  
Concord, N. H. 03301

**Telephone** 271-2100/2730

**Contact Person** Gilbert S. Center  
Executive Director

**Service** All N. H. school libraries, in addition to public libraries are on mailing list for newsletter (NEW HAMPSHIRE GAZETTE) & other materials, such as NEW HAMPSHIRE'S ROLE IN THE AMERICAN REVOLUTION, 1763-1789; A BIBLIOGRAPHY (additional copies \$3 each, payable to NARBC; order from State Library). Grants have been made to projects that have implications for education. For use in elementary/middle grades, some student historiettes, activity kits and teachers' manual are already available; contact Bicentennial Educational Resources, Wilson Hall, Hanover 03755. Of use in senior high, first in a series of four annual issues of HISTORICAL NEW HAMPSHIRE is devoted to powder raids of Fort William and Mary, 1774; order from New Hampshire Historical Society, \$2.50.

Diorama representing raid on Ft. William and Mary has been placed in Hall of Flags, State House.



BLIND, NEW HAMPSHIRE ASSOCIATION FOR THE

Address 60 School Street  
Concord, N. H. 03301

Telephone 224-4039

Contact Person Gale N. Stickler  
Executive Director

Services A non-profit direct service agency providing basic rehabilitation services to all ages of blind and visually handicapped individuals and their families throughout New Hampshire. An active public education program is operated by this agency and they welcome the opportunity to inform groups or individuals about blindness; services; and the rehabilitation process and related topics. Speakers, films, slides, printed material and mailings are available.

Time Limitations Flexible

Geographic Area Statewide

CIVIL DEFENSE AGENCY

Address Airport Road  
Concord, N. H. 03301

Telephone 271-2231

Contact Person E. George Moses

Services Student and teacher manuals, plus films available for disaster training. Professional assistance in preparing school disaster plans.

Geographic Area State of New Hampshire

COUNCIL OF CHURCHES

Address P. O. Box 63, 24 Warren St.  
Concord, N. H. 03301

Telephone 224-1352

Contact Person Rev. Frank H. Gross  
Executive Secretary



COUNCIL OF CHURCHES (cont'd)

**Services** Agency of cooperation for member Christian denominations in New Hampshire (state-wide denominational bodies). In a position to establish linkage with church programs, to identify resource persons from churches on a variety of issues and concerns, and to work actively with groups or agencies whose concerns parallel churches.

**Time Limitations** Time is needed for project development. Regarding resource identification, response should be nearly immediate.

**Geographic Area** Statewide

DAIRY & FOOD COUNCIL, NEW ENGLAND

**Address** RD 8, Corner Rte. 101 & Bell Hill Road  
Bedford, N. H.

**Telephone** 472-5761

**Contact Person** Barbara M. Lambert  
Nutrition Education Consultant

**Services** Nutrition education. Workshops, seminars and classes for leader groups in the health and teaching profession. Limited amounts of nutrition education materials provided at no charge. Films and filmstrips available on loan. Teaching aids designed for preschool age through adulthood. (Dairy Council is a non-profit nutrition education organization supported by the dairy industry. New England Dairy and Food Council is an affiliated unit of the National Dairy Council.)

**Time Limitations** Workshops are generally conducted for 2-6 hours. Special programs may be arranged.

**Geographic Area** State of New Hampshire

DENTAL HEALTH, BUREAU OF, NEW HAMPSHIRE DIVISION OF PUBLIC HEALTH

**Address** 61 South Spring Street  
Concord, N. H. 03301

**Telephone** 271-3207

DENTAL HEALTH, BUREAU OF (cont'd)

Contact Person Charles E. Zumbrunnen, D.D.S., Director  
Services Dental Health. Careers on the Dental team: dental assistant, dental hygienist, dental laboratory technician, dentist.  
Geographic Area State of New Hampshire

DENTAL SOCIETY, NEW HAMPSHIRE

Address 23 School Street  
Concord, N. H. 03301  
Telephone 225-5961  
Contact Person Mrs. Audrey S. Nelson  
Administrative Secretary  
Services Information relative to dental practice in the state of New Hampshire

ELDERLY, NEW HAMPSHIRE ASSOCIATION FOR THE

Address 3 North Main Street  
Penacook, N. H. 03301  
Telephone 753-9876  
Contact Person James M. Lewis  
Executive Director  
Services: Concerns of the elderly in New Hampshire. Staff and Governing Board members available to speak.  
Limitation Proper notice should be given - two weeks to a month.  
Geographic Area Statewide

ENERGY, GOVERNOR'S COUNCIL ON

Address 3 Capitol Street  
Concord, N. H. 03301  
Telephone 271-2711  
Contact Person Marshall Cobleigh  
Executive Vice-Chairman

ENERGY, GOVERNOR'S COUNCIL ON (cont'd)

Service The Governor's Council on Energy will supply schools with speakers on the energy situation. The office is also able to answer questions relating to energy and can furnish material on the subject.

Geographic Area State of New Hampshire

ENVIRONMENTAL ENGINEERS, INC.

Address 3 Pleasant Street  
Concord, N. H. 03301

Telephone 228-1334

Contact Person William L. Fletcher

Service Perform sanitary engineering services for municipalities, developers, and industry. Can furnish a speaker to describe their role in preventing and controlling water pollution in New Hampshire.

Geographic Area Concord and vicinity.

Limitations Allow for a minimum of one week's notice

FISH & GAME DEPARTMENT

Address 34 Bridge Street  
Concord, N. H. 03301

Telephone 271-3212

Contact Person Director of Information &  
Education Division

Service Provide films on loan on a variety of conservation subjects. Fish & Game also has a display room which contains a variety of stuffed animals. Tours of this room can be arranged with the Information and Education Division. Eight hatcheries and rearing stations are also open to the public. Most films are one-half hour in length.

Geographic Area Statewide

FORESTS, SOCIETY FOR THE PROTECTION OF NEW HAMPSHIRE

Address 5 South State Street  
Concord, N. H. 03301

Telephone 224-9945

Contact Person Leslie Clark,

Service Consultant in outdoor education, conservation and environmental education. Can work with teacher workshops, advise on land use of school property. Also direct a day laboratory in science and conservation during school year at Bear Brook State Park - Grades 3 thru 12.

Time Limitations Varies with time of year and other duties.

Geographic Area State of New Hampshire

FOX STATE FOREST

Address Hillsboro, N. H. 03244

Telephone 464-3453

Contact Person Philip Verrier  
Research Forester

Service Conference building with meeting room 52' by 35'. Forestry museum and exhibits - open by appointment weekdays, 8:00 a.m. to 5:00 p.m. Approximately twenty miles of trails. Arrangements can be made with a forester to conduct field trips or training sessions for adults or children.

HEALTH CAREERS, NEW HAMPSHIRE COUNCIL

Address 61 South Spring Street  
Concord, N. H. 03301

Telephone 224-5061 or 271-2775

Contact Person Ms. Elizabeth F. Natti  
Executive Director

Service A clearinghouse of information on careers in the health field. Publication and distribution of health careers informational materials. Consultation and assistance in education program planning and development.

Geographic Area State of New Hampshire

HEALTH EDUCATION SERVICES, DIVISION OF PUBLIC HEALTH

Address 64 South Street  
Concord, N. H. 03301

Telephone 271-2714

Contact Person Edward Breslin

Service Information relative to the Division of Public Health.  
Public Health film library (list available).  
Director of services (list available).

HUMAN RIGHTS, NEW HAMPSHIRE COMMISSION FOR

Address 66 South Street  
Concord, N. H. 03301

Telephone 271-2767

Contact Person Berel Firestone

Service Investigates complaints of discrimination in housing,  
public accommodations and employment, only, because  
of race, color, religion, national origin, sex or age.

INDUSTRIAL DEVELOPMENT, DEPARTMENT OF RESOURCES & ECONOMIC DEVELOPMENT

Address P. O. Box 856  
State House Annex  
Concord, N. H. 03301

Telephone 271-2591

Contact Person Paul H. Guilderson  
Industrial Director

Service The Industrial Development office is prepared to  
assist management in their examination of the potential  
advantages of N. H. locations in terms of manpower and  
facility requirements, marketing considerations,  
supporting services and other locational criteria.  
Various publications are available.

KIDNEY FOUNDATION, NEW HAMPSHIRE

Address                    Box 418  
                              Concord, N. H. 03301

Telephone                224-6641

Contact Person        Vesta Blanchard, Secretary  
                              William Wareing, President

Service                 Information pertaining to kidney disease, treatment,  
                              and funding. Speakers and films are available.

Time Limitations     Preferably speakers for evening meeting, some  
                              exceptions possible.

Geographic Area      Southern and middle New Hampshire

LEGAL ASSISTANCE, NEW HAMPSHIRE

Address                88 Hanover Street  
                              Manchester, New Hampshire

Telephone              668-2900

Contact Person        Jefferson Brummer  
                              Director of Community Education

Service                To ensure equal justice, NHLA provides free legal  
                              services to those persons in N.H. who can not afford  
                              a lawyer. Pamphlets available. Participation in  
                              various workshops, educational forums and speaking  
                              engagements before various schools and community  
                              organizations.

Geographic Area      State of New Hampshire

LUNG ASSOCIATION, NEW HAMPSHIRE

Address                456 Beech Street  
                              Manchester, N. H. 03105

Telephone              669-2411

Contact Person        Jere D. Hoover, Executive Director

LUNG ASSOCIATION, NEW HAMPSHIRE (cont'd)

**Service** Literature on lung disease (asthma, emphysema, chronic bronchitis, tuberculosis, smoking and health and air pollution (N.H. Clean Air Alliance). Movies on lung disease and smoking (available by advance reservation). Speakers available to student groups to discuss lung disease, air pollution and related problems, smoking and health. Seminars for health personnel involved in the delivery of care to children with asthma.

**Geographic Area** State of New Hampshire

MUSCULAR DYSTROPHY ASSOCIATIONS OF AMERICA

**Address** 1087 Elm Street  
Manchester, N. H. 03101

**Telephone** 668-0800

**Contact Person** Mrs. Joanna K. Adrian

**Service** Free MD clinics, summer camping programs, research programs throughout the New England area, parent meeting groups. MDA has opened its first N.H. Neuro-muscular Clinic at Mary Hitchcock Clinic under the direction of Dr. Jose L. Ochoa, M.D.

**Geographic Area** State of New Hampshire

NURSES ASSOCIATION, NEW HAMPSHIRE

**Address** 5 South State Street  
Concord, N. H. 03301

**Telephone** 224-3783

**Contact Person** Sister M. Augustine San Souci  
Executive Director

**Service** The profession of nursing, in general. Essential element & component within health care system; career development & expanding opportunities in field, educational preparation required; basic qualifications, personnel and potential; the organization and purpose of the N.H.N.A.

**Geographic Area** State of New Hampshire



NUTRITION, PUBLIC HEALTH SERVICES

Address            Room 119, Public Health Building  
                     61 South Spring Street  
                     Concord, N. H. 03301

Telephone            271-2776.

Contact Person        Dona White, R.D.

Service              Training and program development in nutritional care throughout the life cycle. Programs directed toward health professionals, educators and the general public. The public health nutritionist is able to evaluate and interpret trends in food habits and may be particularly helpful to teachers in evaluation of popular publications related to foods and nutrition.

Geographic Area      Statewide

Other Limitations    Staff limitations preclude direct individual counseling on diet problem.

PARKS, DIVISION OF, N. H. DEPARTMENT OF RESOURCES & ECONOMIC DEVELOPMENT

Address            P. O. Box 856, State House Annex  
                     Concord, N. H. 03301

Telephone            271-3254/3556

Contact Persons        Raymond LaChange, Assistant Supervisor  
                             Irene Arnold, Administrative Assistant

Service              The Division of Parks operates 32 state parks, four historic sites and eight wayside picnic areas. All are open from late May to early September. New Hampshire children's groups through high school age, during the period prior to approximately June 20, are admitted free; from approximately June 20 to closing, except Sundays and holidays, children are admitted for 25¢. Due to limited staff, speakers cannot be provided.

For list of State Parks see next page.

1974 STATE PARK DIRECTORY

<u>PARK</u>	<u>MANAGER</u>	<u>PARK ADDRESS</u>	<u>AREA PHONE</u>
Androscoggin	(see under Dixville)		
Annett	Carl F. Thomsen	Rindge, N. H. 03461	--
Bear Brook	John S. Cole	Allenstown, N. H. 03275	485-9874
Chesterfield	Arthur Howes	Spofford, N. H. 03462	--
Clough	Louis LaForce	Weare, N. H.	529-7112
Coleman	Carl Jackson	Colebrook, N. H. 03576	237-4520
Crawford Notch	Leo T. Monahan	Crawford House, N. H. 03577	374-2272
Dixville &	Forrest E. Graves	Errol, N. H. 03579	482-3337
Androscoggin Wayside			
Echo Lake	Charles C. Whiton	No. Conway, N. H. 03860	356-2672
Ellacoya	Earl T. Cayes	RFD 4, Laconia, N. H. 03246	293-7821
Forest Lake	Robert Wutzdorff	Whitefield, N. H. 03598	837-9858
Franconia Notch	William A. Norton	Franconia, N. H. 03580	823-5563
Gardner	Louis Micucci	Shelburne, N. H. 03594	--
Greenfield	Charles D. Burrage	Box 203, Greenfield 03047	547-3497
Hampton Beach	John G. Peteson	Hampton Beach, N.H. 03842	926-3784
Hampton Meters	James Connor	Ocean Blvd., Hampton Beach	926-5000
Hampton Seashell	Daniel G. Stone	Hampton Beach, N.H. 03842	926-2862
Honey Brook	Norman L. Witham	Rt. 10, E. Lempster, N.H. 03605	--
Kingston	Alden E. Nason	RFD, E. Kingston, N. H. 03827	642-5471
Milan Hill	Eva O. Niclason	Box 59A, RFD 1, Berlin, N.H. 03570	449-3444
Miller	Richard I. Jenkins	Peterboro, N. H. 03458	924-6688
Monadnock	Bernard Haubrich, Jr.	Jaffrey Center, N. H. 03454	532-8862
Moose Brook	Louis Micucci	(see Gardner Wayside) RFD 1, Berlin, N.H. 03570	466-3860
Odiorne Point	Kenneth M. Varney	Rye, N. H. 03870	436-7406
Otter Brook	B. Wm. Bigelow	Surry, N. H. 03431	352-5516
Pawtuckaway	Jack R. Graves	Raymond, N. H. 03077	895-3031
Pierce Homestead	William Douglas	Lower Vill, Hillsboro, N.H. 03244	478-3165
Pillsbury	Charles E. Hamel, Jr.	Goshen, N. H. 03752	863-2860
Pisgah	Cecil Parker	Keene, N. H. 03431	--
Rhododendron	Paul Tucker	Fitzwilliam, N. H. 03447	585-6621
Rollins	Walter A. Sidney	Warner, N. H. 03278	456-3808
Silver Lake	Richard Carling	Rt. 122, Hollis, N. H. 03049	465-2342
Sunapee	Richard Parker	Mt. Sunapee, N. H. 03772	763-2356
Wadleigh	Donald Davis, Jr.	No. Sutton, N. H. 03260	927-4724
Wallis Sands	William Louglin, Jr.	Rye, N. H. 03870	436-9404
Washington, Mt.	Gordon Miller	P. O. Box D, Gorham, N.H. 03581	466-0004
Webster Birthplace	Philip W. Delehanty	Franklin, N. H. 03235	934-2171
Weeks	Virginia M. Amadon	Lancaster, N. H. 03584	788-4467
Wellington	George Sargent	RFD 1, Bristol, N. H. 03222	744-2997
Wentworth	Norman W. Place	RFD 2, Wolfeboro, N.H. 03894	569-3699
Wentworth Coolidge	Vera Pennell	Little Harbor Rd., Portsmouth	436-6607
White Lake	Andrew W. Eldridge	West Ossipee, N. H. 03890	323-7350
Winslow	Donald Brown	Wilmot Flat, N. H. 03287	526-6168

PETROLEUM COUNCIL, NEW HAMPSHIRE

Address 23 School Street  
Concord, N. H. 03301

Telephone 224-4097

Contact Person Mrs. Arlene Mosher, Administrative Assistant  
to Stacey W. Cole

Service Speakers Bureau - People available to speak in class-  
rooms on the subject of petroleum.

Geographic Area Throughout New Hampshire

Limitation Reasonable notice.

PLANNING, COMPREHENSIVE

Address Room 123, State House  
Concord, N. H. 03301

Telephone 271-3581

Contact Person George McAvoy

Service Comprehensive planning: 1) land use; 2) population pro-  
jections; 3) flood insurance; 4) A-95 state clearinghouse;  
5) outdoor recreation planning; 6) coastal zone management;  
7) planning regions; 8) zoning, building codes, historic  
districts at community level. Speakers provided.

Geographic Area State of New Hampshire

Limitation Request for speaker must be received two weeks in  
advance of speaking date.

POLICE, STATE HEADQUARTERS, DEPARTMENT OF SAFETY

Address Department of Safety  
State Police Headquarters  
Concord, N. H. 03301

Telephone 271-2111

Contact Person Colonel Paul A. Doyon  
Director

POLICE, STATE HEADQUARTERS, DEPARTMENT OF SAFETY (cont'd)

Service Provide completely mobile force of uniformed troopers and plainclothes detectives strategically located throughout the state to enforce traffic and criminal laws and to provide law enforcement services to other law enforcement agencies on request. Speaker available.

Time Limitation One hour - one presentation on work of State Police.

Other Limitations Requests in writing must be received at State Police Headquarters, Concord, at least 30 days in advance.

Geographic Area Troops located at Exeter; Bedford; Keene; Bow; Moultonboro and Twin Mt., N. H.

PRISON, NEW HAMPSHIRE STATE

Address 281 North State Street  
Concord, N. H. 03301

Telephone 224-6554

Contact Person Deputy Warden Ronald Fuller

Service Prison Tours

Time Limitation Severe, tour plans must be made substantially in advance.

PROBATION, DEPARTMENT OF, STATE OF NEW HAMPSHIRE

Address 11 Depot Street, Box 769  
Concord, N. H. 03301

Telephone 271-2317, 2318

Contact Person Diane Forcier, Secretary to Director  
John King

Service Probation Department investigates and supervises offenders placed on probation by the courts. Director will be happy to speak to any groups relative to any services performed. Volunteer program exists - the public is asked to volunteer their services to work with one person placed on probation.  
(For Probation county offices, see next page)

PROBATION, DEPARTMENT OF, STATE OF NEW HAMPSHIRE (cont'd)

Probation County Office

Telephone

Rockingham - County Court House, Exeter	772-4753
Hillsborough - County Court House, Manchester	668-0334/35
Merrimack - County Court House, Concord	225-6781
Coos - County Court House, Berlin	752-1123
Grafton - County Court House, No. Haverhill	787-6900
Strafford - 8 Third St., Dover	742-6240
Belknap - County Court House, Laconia	524-3036
Cheshire - Ball Block, 31 Central Sq., Keene	352-4139
Sullivan - Newport Bank Building, Main St., Newport	863-1330
Carroll - County Home, Ossipee	539-6434

PSYCHIATRIC SOCIETY, NEW HAMPSHIRE

Address	4 Park Street Concord, N. H. 03301
Telephone	224-1909
Contact Person	John H. Randall, M. D.
Service	Psychiatry
Geographic Area	State of New Hampshire

PUBLIC UTILITIES COMMISSION, NEW HAMPSHIRE

Address	26 Pleasant Street Concord, N. H. 03301
Telephone	271-2452
Contact Person	Dom S. D'Ambruoso, Secretary
Service	Maintains library of utility materials open to public.

PUBLISHER - Bayard E. Sawyer

Address	The New Englander Dublin, N. H. 03444
Telephone	563-8111
Service	Available to discuss with groups fundamentals of magazine publishing; how to start a new magazine, etc.
Geographic Area	Southern New Hampshire

RADIATION CONTROL, NEW HAMPSHIRE AGENCY

Address State Laboratory Building  
Hazen Drive  
Concord, N. H. 03301

Telephone 271-2282

Contact Person John R. Stanton

Service Available to meet with teachers and/or speak to classrooms about the control of radiation hazards.

Time Limitation Available Monday-Friday, 8:30-5:00.

Geographic Area State of New Hampshire

RECREATION SERVICE, COMMUNITY, NEW HAMPSHIRE

Address Box 856, State House Annex  
Concord, N. H. 03301

Telephone 271-3627

Contact Person Richard A. Tapply

Service Consultation on recreation and park matters - leadership training workshops for recreation leaders, free materials on recreation, parks, and conservation. Library of recreation, parks and outdoor education reference books available.

Geographic Area State of New Hampshire

RESOURCES, DIVISION OF, DEPARTMENT OF RESOURCES & ECONOMIC DEVELOPMENT

Address P. O. Box 856, State House Annex  
Concord, N. H. 03301

Contact Person Theodore Natti, Director

Telephone 271-2411

Service Offers advise and assistance in forest management, and related resources. Provides programs of demonstrations, information, and education on forestry and related subjects.

Geographic Area State of New Hampshire



SAFETY COUNCIL, NEW HAMPSHIRE

Address 4 Park Street  
Concord, N. H. 03301

Telephone 224-1900

Contact Person Richard H. Clough  
Executive Vice President

Service Statewide affiliate of the National Safety Council.  
Valuable film and safety materials available.  
A speakers bureau is maintained. Limited film library  
and an active overall safety program is maintained  
through various safety committees. Council can help  
with the processing of orders for materials from the  
National Safety Council and in locating all types of  
materials for the classroom.

Time Limitation Office open daily from 8:30-5:00.

Geographic Area New Hampshire

Other Limitations Limited financial resources; will assist within limitations.

SAFETY SERVICES, DIVISION OF, DEPARTMENT

Address Morton Building, Loudon Road  
Concord, New Hampshire 03301

Telephone 271-3336

Contact Person Alton H. Stone, Director

Service Fire safety; boating safety and boating education.  
Talks, films, courses for children and adults.

Geographic Area State of New Hampshire

SCHOOLS, COUNCIL FOR BETTER, NEW HAMPSHIRE

Address P. O. Box 724  
Manchester, N. H. 03105

Telephone 622-5711

Contact Person Mrs. Jean A. Pollock  
Secretary



SCHOOLS, COUNCIL FOR BETTER, NEW HAMPSHIRE (cont'd)

**Service:** Speakers Bureau - listing of experts on various subjects who are available for speaking engagements. Awards Program - each year school districts have the opportunity to submit information on any outstanding program that their district or school has developed. These programs are visited and judgments made with the best receiving their awards at the annual meeting of the Council in November. Sponsoring group for the New Hampshire School Volunteer Program. Publisher of the N. H. Council for Better Schools Bulletin, which is distributed six times each year.

**Geographic Area** New Hampshire

WATER SUPPLY & POLLUTION CONTROL COMMISSION, NEW HAMPSHIRE

**Address** 105 Loudon Road  
Concord, N. H. 03301

**Telephone** 271-3503

**Contact Person** Donald W. Peters

**Service** The Commission is involved with the administration of laws pertaining to wastewater treatment, as well as domestic water supply treatment; therefore, persons are available to assist the individual teachers in programs they may want to establish regarding water pollution abatement or study of water pollution and how it occurs. Free film service, ten films available. Also available, published river basin reports which cover the present pollution conditions and an appraisal of what must be done to bring the surface waters of the state to the legislated quality.

**Times Limitation** Regarding personal appearance, the Commission would prefer day-time appearances and a one month prior notice. (Speaker availability dependent upon work load.)

**Geographic Area** State of New Hampshire

WOMEN, N. H. COMMISSION ON THE STATUS OF

**Address** Room 301, 3 Capitol Street  
Concord, N. H. 03301

**Telephone** 271-3695

**Contact Person** Elizabeth Furber  
Executive Administrator

WOMEN, N. H. COMMISSION ON THE STATUS OF (Cont'd)

Service

Stimulate and encourage study and revision of the statutes relative to women, recommend methods of overcoming discrimination against women in public and private employment; & civil and political rights, to promote more effective methods for enabling women to develop their skills and continue their education and secure appropriate recognition of women's accomplishments and contributions to the State. Expertise in women's issues and problems; studies on women on campus; credit problems of women; law enforcement agencies and women; State laws affecting women; and state discrimination in employment. Published series on "N. H. Women & The Law" including YOU, which is published every other month. Resource materials are available at the Commission office, including sexism in education, women workers, women in government and women's groups. Materials mailed out upon request.

Geographic Area

State of New Hampshire

Time Limitation

Office hours 8:30-3:00 Monday thru Friday.

PLACES OF INTEREST

BELMONT

White Mountain Vineyards

Durrell Mt. Rd. & Province Rd. Open  
June 1 - October. Winemaking in winery  
daily. Call 524-0174 for free tour.

CENTER HARBOR

Norvik Kennels

Sled dogs, small museum, arctic equipment.  
Open late spring to early fall. Adm: 50¢.  
Tel. 253-7114.

CHOCORUA

Old Village Barn

Rte. 16, ¼ mile north of Rt. 113. Open  
daily July 1 - October 30. Handcrafted,  
educational, safe, durable wooden toys.  
Historical display of early newspapers from  
War of 1898 to moon walk. Free admission.

EAST HEBRON

Paradise Point Nature Center

Four miles of self-guiding nature trails,  
movies, special events throughout the week.  
Open June 29 - September 3, 10-5 daily.  
Adm: 25¢.

FRANCONIA

Cannon Mountain Aerial  
Tramway

Summer season open weekends from May 25.  
Open full time June 8 to October 20.  
Round trip, adults \$2.00; children (ages  
6-12) \$1.00.

GLEN

Story Land

Jct. Rtes. 16 & 302. Miniature village.  
Pumpkin coach, antique carousel; swan  
boats, etc. Open June 16 - Oct. 14  
Adm: adults \$2.00; children \$1.00.

GORHAM

The Arctic Circle

Rte. 2, 84 Lancaster Rd. Sled dogs;  
ornamental pheasants; doves; show pigeons;  
etc. Siberian husky puppy ranch. Adm: free.

GRAFTON

Ruggles Mine

Off Rte. 4. Mineral exhibits; oldest mica,  
feldspar, beryl mine in U. S. Open June -  
Oct. 28 daily. Week-ends from May 25.  
Adm. adults \$2.00; children \$1.00.

PLACES OF INTEREST (Cont'd)

HAVERHILL

Pages Model A Garage

Main St. Jct. Rte 25 & 10. Open all year, 8-5, except Sundays. Model A, B and early V8 Ford cars, some completely restored, parts and supplies. Shop open to public.

INTERVALE

Abenaki Indian Shop

Off Rte. 16-302 at Intervale. Open daily June 15-Labor Day, weekends to October 15, 9:30-5:30 p.m. Collection of indian artifacts and carvings. Adm. free.

JEFFERSON

Santa's Village & Gingerbread Forest

Home of Santa Claus, animals in 25 settings, magic castle. Open June 16-mid-Oct. weekdays 9-6, Sundays 9:30-6:30.

JEFFERSON

Six Gun City

Jct. Rtes 2 & 15. Silent western movies, skits, free pony rides and stage coach rides. Wagon museum. Open mid-June to mid-October, week-ends after Labor Day. Adm. adults \$2.00; children 6-11, \$1.00.

LACONIA-WEIRS BEACH

Animal Forest Park, Rte. 3. Open daily June 15 - Labor Day; week-ends from May 1 to Nov. 1. Herds of loose tame animals to pet, & feed. Animated circus displays, etc. Adm: adults \$1.75; children \$1.00.

LINCOLN

Clark's Trading Post

Rte. 3. Gift shop open May 15-Oct. 30. Amusements such as bear shows, train rides, three museums. Open July 1 - Labor Day. Adm. free.

LINCOLN

Loon Mt. Recreation Area

Kancamagus Highway. Open last weekend of June - October 15. Gondola operates week-ends only between Labor Day & foliage season. Many events during season. Free admission.

MERRIMACK

Busch Clydesdale Hamlet

Anheuser-Busch Brewery, Rte. 3. Open all year: Monday-Friday 9:30 a.m. to 3:30 p.m. Saturday tours during June & Aug. Closed Sundays; guided tours. Famous 8 horse N.E. clydesdales budweiser hitch makes hamlet its home. Oxen, tack room carriage house, exhibits. Adm. free.

PLACES OF INTEREST (Cont'd)

MOULTONBORO

Castle in the Clouds

6,000 acres of natural beauty. Magnificent views of Lake Winnepesaukee and White Mountains. Castle tours, hiking trails, local wildlife in natural settings.

Eleven trains daily starting 8:00 a.m. Open June 29 to October 13. Tel.: 846-5404.

MT. WASHINGTON

World's First Cog Railway

Open weekends May 25-June 22, then daily through late October. Adm: adults \$2.50; children 6-12, \$1.25.

NORTH CONWAY

Mt. Cranmore Skimobile

Nature garden, museum, guided tours thru glacial gorge. Organized children's group tours. \$1.00 each. Tel. 745-8031.

NORTH WOODSTOCK

Lost River Reservation

Starts at Glen House on Rte. 16. Open mid-May to late October, weather permitting. Toll, \$6.00 for car and driver, plus \$1.00 for each passenger.

PINKHAM NOTCH

Mt. Washington Auto Road

Amusement park. Off I-93 & Rte. 28. Open Easter, week-ends to May 30; then daily to Labor Day. Adm: 25¢.

SALEM

Canobie Lake Park

Rte. 3, 2 mi. S. of #302. Full circus under big top. Playground, picnic area, museum. Open June 29 - Labor Day. Adm: adults \$1.75; children \$1.00.

TWIN MOUNTAIN

Circus Towne

Rtes. 16 & 25.

WEST OSSIPPEE

Mt. Whittier Recreational Area

Rte. 25. Tours. Mineral collection, waterfowl collection, maple museum, picnic area. Adm: adults \$2.25; children \$1.15.

WEST PLYMOUTH

Polar Caves

SCIENCE CENTERS

HOLDERNESS

Squam Lake Science Center

David E. Hammon, Science Center Association Director; ecology-oriented programs daily. Blacksmith shop, sap house, sawmill show the applied science of those times. Nature trails (reptile exhibit) N. H. animals and plants. Open July 1 - Labor Day. Tel 968-7194.

NASDAQ

The Arts & Science Center

14 Court St. Open all year. Children's museum. Two large exhibit facilities, total new building classrooms. Admission \$1.00 & 50¢.

RYE

Audubon Nature Center  
Odiorne Point State Park

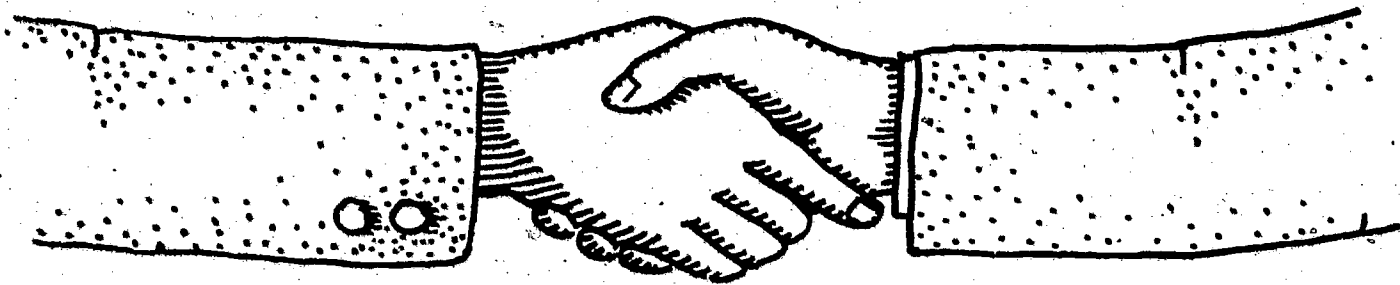
Special events - guides, natural history & field trips daily. Admission free with park admission. Open July 1 - Sept. 3 10:00 a.m. to 5:00 p.m. daily, except Mondays.

SUNCOOK

N. H. Audubon Society of  
N. H. Nature Center, Bear Brook

(Audubon Society of N.H.  
office: 3 Silk Farm Rd.,  
Concord, N.H. 03301)

Promotes greater understanding of our natural environment. Exhibits; field trips, evening programs, self-guiding nature trails, nature library, special school programs for school groups in late spring and early fall. Open June 29 - September 3.



WOULD YOU LIKE TO BE LISTED IN THE NEW HAMPSHIRE EDUCATIONAL RESOURCE CATALOG,  
PART III: EXTERNAL RESOURCES? IF SO, COMPLETE THE FORM BELOW.

Name: \_\_\_\_\_

Address: \_\_\_\_\_

Telephone Number: \_\_\_\_\_

Contact Person: \_\_\_\_\_

Expertise or Service: \_\_\_\_\_

\_\_\_\_\_  
\_\_\_\_\_  
\_\_\_\_\_  
\_\_\_\_\_  
\_\_\_\_\_  
\_\_\_\_\_  
\_\_\_\_\_  
\_\_\_\_\_  
\_\_\_\_\_  
\_\_\_\_\_

Time Limitations: \_\_\_\_\_

Geographic Area Where Available: \_\_\_\_\_

Other Limitations: \_\_\_\_\_

\_\_\_\_\_

Mail to: Dorothy M. Hart  
NEPTE Research Stenographer  
State Department of Education  
410 State House Annex  
Concord, N. H. 03301